

Datasheet for ABIN733943

**anti-SLC1A1 antibody (AA 451-524)****1** Image[Go to Product page](#)

## Overview

Quantity:	100 µL
Target:	SLC1A1
Binding Specificity:	AA 451-524
Reactivity:	Human, Rat, Mouse
Host:	Rabbit
Clonality:	Polyclonal
Conjugate:	This SLC1A1 antibody is un-conjugated
Application:	Western Blotting (WB), ELISA, Immunohistochemistry (Paraffin-embedded Sections) (IHC (p)), Flow Cytometry (FACS)

## Product Details

Immunogen:	KLH conjugated synthetic peptide derived from human EAAT3
Isotype:	IgG
Cross-Reactivity:	Human, Mouse, Rat
Predicted Reactivity:	Dog,Cow,Pig
Purification:	Purified by Protein A.

## Target Details

Target:	SLC1A1
Alternative Name:	EAAT3 ( <a href="#">SLC1A1 Products</a> )

## Target Details

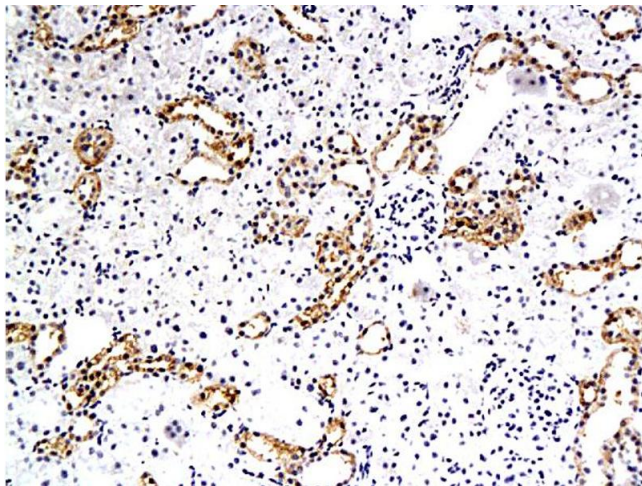
Background:	Synonyms: DCBXA, EAAC1, EAAT3, SCZD18, Excitatory amino acid transporter 3, Excitatory amino-acid carrier 1, Neuronal and epithelial glutamate transporter, Sodium-dependent glutamate/aspartate transporter 3, Solute carrier family 1 member 1, SLC1A1 Background: Transports L-glutamate, L- and D-aspartate and L-cystein (PubMed:21123949). Essential for terminating the postsynaptic action of glutamate by rapidly removing released glutamate from the synaptic cleft. Acts as a symport by cotransporting sodium. Negatively regulated by ARL6IP5 (By similarity).
Gene ID:	6505
UniProt:	<a href="#">P43005</a>
Pathways:	<a href="#">Dicarboxylic Acid Transport</a>

## Application Details

Application Notes:	WB 1:300-5000 ELISA 1:500-1000 FCM 1:20-100 IHC-P 1:200-400
Restrictions:	For Research Use only

## Handling

Format:	Liquid
Concentration:	1 µg/µL
Buffer:	0.01M TBS( pH 7.4) with 1 % BSA, 0.02 % Proclin300 and 50 % Glycerol.
Preservative:	ProClin
Precaution of Use:	This product contains ProClin: a POISONOUS AND HAZARDOUS SUBSTANCE, which should be handled by trained staff only.
Storage:	4 °C,-20 °C
Storage Comment:	Shipped at 4°C. Store at -20°C for one year. Avoid repeated freeze/thaw cycles.
Expiry Date:	12 months



#### Immunohistochemistry

**Image 1.** Formalin-fixed and paraffin embedded rat renal tubular endothelial cells labeled with Anti-EAAT3, Unconjugated (ABIN733943) followed by conjugation to the secondary antibody and DAB staining