

Datasheet for ABIN734153
anti-FDCSP antibody (AA 18-85)[Go to Product page](#)

1 Image

Overview

Quantity:	100 µL
Target:	FDCSP (C4orf7)
Binding Specificity:	AA 18-85
Reactivity:	Human, Mouse
Host:	Rabbit
Clonality:	Polyclonal
Conjugate:	This FDCSP antibody is un-conjugated
Application:	ELISA, Immunofluorescence (Cultured Cells) (IF (cc)), Immunofluorescence (Paraffin-embedded Sections) (IF (p)), Immunohistochemistry (Paraffin-embedded Sections) (IHC (p)), Immunohistochemistry (Frozen Sections) (IHC (fro))

Product Details

Immunogen:	KLH conjugated synthetic peptide derived from rat FDC-SP
Isotype:	IgG
Cross-Reactivity:	Human, Mouse
Predicted Reactivity:	Rat, Horse
Purification:	Purified by Protein A.

Target Details

Target:	FDCSP (C4orf7)
---------	----------------

Target Details

Alternative Name: FDC-SP ([C4orf7 Products](#))

Background: Synonyms: FDC, FDCs, Follicular dendritic cell, Follicular dendritic cell secreted protein, Follicular dendritic cell, Follicular dendritic cell secreted peptide, FDC secreted protein.

Background: Follicular dendritic cells are cells that facilitate antigen recognition by B cells in follicles. This kind of dendritic cell is not bone marrow derived and is not a kind of blood cell. It is purely a resident of the follicles of secondary lymphoid organs. B cells form germinal centers around follicular dendritic cells in lymphoid organs. Dendritic cells form from monocytes, white blood cells which circulate in the body and, depending on the right signal, can turn into dendritic cells or macrophages. The monocytes in turn are formed from stem cells in the bone marrow. In normal tissue this antibody identifies dendritic cells and a proportion of B lymphocytes. Evidence in pathological tissue and functional studies suggests it binds to an epitope expressed by antigen presenting cells. Within the macrophage/dendritic cell populations the epitope seen by RFD1 is coexpressed with RFD7 by a subset of cells that exhibit suppressive activity on T cell stimulation.

Gene ID: 494224

UniProt: [Q5R1M6](#)

Application Details

Application Notes: ELISA 1:500-1000
IHC-P 1:200-400
IHC-F 1:100-500
IF(IHC-P) 1:50-200
IF(IHC-F) 1:50-200
IF(ICC) 1:50-200

Restrictions: For Research Use only

Handling

Format: Liquid

Concentration: 1 µg/µL

Buffer: 0.01M TBS(pH 7.4) with 1 % BSA, 0.02 % Proclin300 and 50 % Glycerol.

Preservative: ProClin

Precaution of Use: This product contains ProClin: a POISONOUS AND HAZARDOUS SUBSTANCE, which should be

Handling

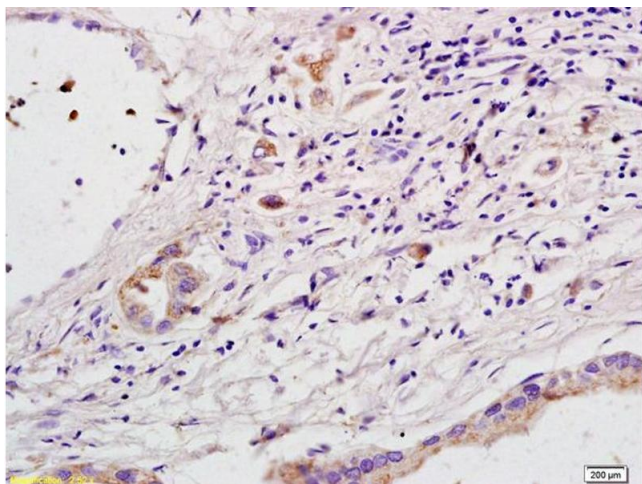
handled by trained staff only.

Storage: 4 °C,-20 °C

Storage Comment: Shipped at 4°C. Store at -20°C for one year. Avoid repeated freeze/thaw cycles.

Expiry Date: 12 months

Images



Immunohistochemistry

Image 1. Formalin-fixed and paraffin embedded human gastric carcinoma labeled with Anti FDC-SP/ADC Polyclonal Antibody, Unconjugated (ABIN734153) at 1:200 followed by conjugation to the secondary antibody and DAB staining