



[Go to Product page](#)

Datasheet for ABIN7342489

## anti-Podocin antibody

### 2 Images

#### Overview

Quantity:	50 µL
Target:	Podocin (NPHS2)
Reactivity:	Human
Host:	Rabbit
Clonality:	Polyclonal
Conjugate:	This Podocin antibody is un-conjugated
Application:	Western Blotting (WB), Immunohistochemistry (IHC), ELISA

#### Product Details

Immunogen:	Synthetic peptide of Human NPHS2
Isotype:	IgG
Cross-Reactivity:	Human, Mouse, Rat
Purification:	Antigen affinity purification

#### Target Details

Target:	Podocin (NPHS2)
Alternative Name:	NPHS2 ( <a href="#">NPHS2 Products</a> )
Background:	Background: This gene encodes the glomerular protein podocin which plays a role in the regulation of glomerular permeability, and acts as a linker between the plasma membrane and the cytoskeleton. Defects in this gene are the cause of autosomal recessive steroid-resistant nephrotic syndrome (SRN). SRN is characterized by onset between three months and five

## Target Details

years, resistance to steroid therapy and rapid progression to end-stage renal disease. An alternative splice variant has been described but its full length sequence has not been determined.

Aliases: nephrosis 2 antibody, Nephrosis 2, idiopathic, steroid resistant (podocin) antibody, nephrosis 2, idiopathic, steroid resistant antibody, NPHS2 antibody, NPHS2 gene antibody, PDCN antibody, PODO\_HUMAN antibody, Podocin antibody, SRN1 antibody

UniProt: [Q9NP85](#)

## Application Details

Application Notes: ELISA:1:2000-1:5000, WB:1:200-1:1000, IHC:1:50-1:200,

Restrictions: For Research Use only

## Handling

Format: Liquid

Buffer: -20 °C, pH 7.4 PBS, 0.05 % Sodium azide, 40 % Glycerol

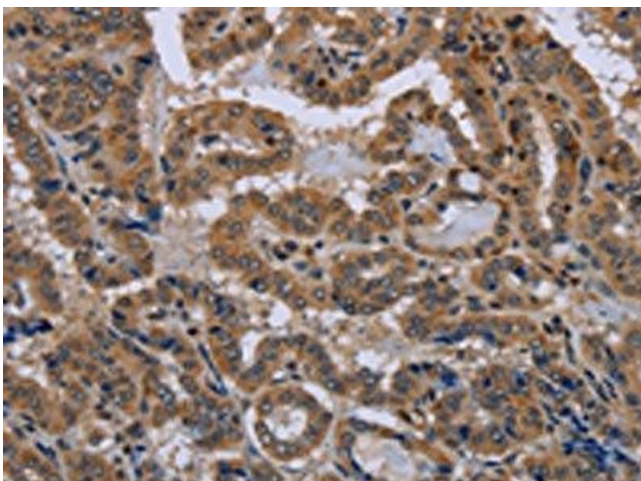
Preservative: Sodium azide

Precaution of Use: This product contains Sodium azide: a POISONOUS AND HAZARDOUS SUBSTANCE which should be handled by trained staff only.

Storage: -20 °C,-80 °C

Storage Comment: Upon receipt, store at -20°C or -80°C. Avoid repeated freeze.

## Images



### Immunohistochemistry

**Image 1.** The image on the left is immunohistochemistry of paraffin-embedded Human thyroid cancer tissue using (NPHS2 Antibody) at dilution 1/40, on the right is treated with synthetic peptide. (Original magnification: x200)



### Western Blotting

**Image 2.** Gel: 10 % SDS-PAGE, Lysate: 40 µg, Lane: Human hepatocellular carcinoma tissue, Primary antibody: (NPHS2 Antibody) at dilution 1/200, Secondary antibody: Goat anti rabbit IgG at 1/8000 dilution, Exposure time: 2 minutes