



[Go to Product page](#)

Datasheet for ABIN7343116  
**anti-TGM6 antibody**

1 Image

### Overview

Quantity:	50 µL
Target:	TGM6
Reactivity:	Human
Host:	Rabbit
Clonality:	Polyclonal
Conjugate:	This TGM6 antibody is un-conjugated
Application:	ELISA, Immunohistochemistry (IHC)

### Product Details

Immunogen:	Synthetic peptide of Human TGM6
Isotype:	IgG
Cross-Reactivity:	Human
Purification:	Antigen affinity purification

### Target Details

Target:	TGM6
Alternative Name:	TGM6 ( <a href="#">TGM6 Products</a> )
Background:	Background: The protein encoded by this gene belongs to the transglutaminase superfamily. It catalyzes the cross-linking of proteins and the conjugation of polyamines to proteins. Mutations in this gene are associated with spinocerebellar ataxia type 35 (SCA35). Alternatively spliced transcript variants encoding different isoforms have been found for this gene.

## Target Details

Aliases: Protein-glutamine gamma-glutamyltransferase 6 antibody, TG6 antibody, TGase Y antibody, TGase-3-like antibody, TGase-6 antibody, TGM3L\_HUMAN antibody, TGM6 antibody, TGY antibody, Transglutaminase 6 antibody, Transglutaminase Y antibody, Transglutaminase-3-like antibody, Transglutaminase-6 antibody

UniProt: [O95932](#)

## Application Details

Application Notes: ELISA:1:2000-1:5000, IHC:1:25-1:100,

Restrictions: For Research Use only

## Handling

Format: Liquid

Buffer: -20 °C, pH 7.4 PBS, 0.05 % Sodium azide, 40 % Glycerol

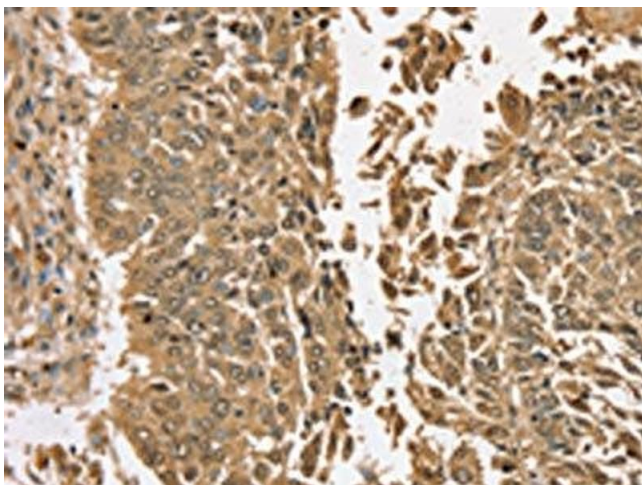
Preservative: Sodium azide

Precaution of Use: This product contains Sodium azide: a POISONOUS AND HAZARDOUS SUBSTANCE which should be handled by trained staff only.

Storage: -20 °C,-80 °C

Storage Comment: Upon receipt, store at -20°C or -80°C. Avoid repeated freeze.

## Images



### Immunohistochemistry

**Image 1.** The image on the left is immunohistochemistry of paraffin-embedded Human lung cancer tissue using (TGM6 Antibody) at dilution 1/35, on the right is treated with synthetic peptide. (Original magnification: x200)