



[Go to Product page](#)

Datasheet for ABIN734483

anti-STAT6 antibody (pTyr641)

4 Images

Overview

Quantity:	100 µL
Target:	STAT6
Binding Specificity:	pTyr641
Reactivity:	Human, Mouse, Rat
Host:	Rabbit
Clonality:	Polyclonal
Conjugate:	This STAT6 antibody is un-conjugated
Application:	ELISA, Immunohistochemistry (Paraffin-embedded Sections) (IHC (p)), Immunofluorescence (Cultured Cells) (IF (cc)), Immunofluorescence (Paraffin-embedded Sections) (IF (p)), Immunohistochemistry (Frozen Sections) (IHC (fro))

Product Details

Immunogen:	KLH conjugated synthetic phosphopeptide derived from human STAT6 around the phosphorylation site of tyrosine Tyr641
Isotype:	IgG
Cross-Reactivity:	Human, Mouse, Rat
Predicted Reactivity:	Cow,Pig,Horse
Purification:	Purified by Protein A.

Target Details

Target:	STAT6
---------	-------

Target Details

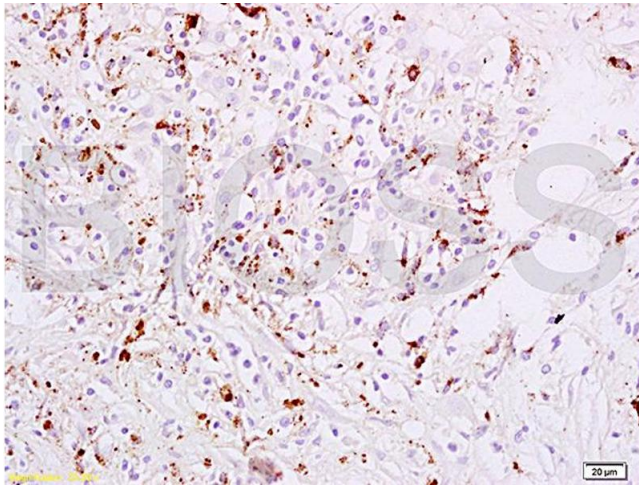
Alternative Name:	STAT6 (STAT6 Products)
Background:	Synonyms: STAT6B, STAT6C, D12S1644, IL-4-STAT, Signal transducer and activator of transcription 6, IL-4 Stat, STAT6 Background: Carries out a dual function: signal transduction and activation of transcription. Involved in IL4/interleukin-4- and IL3/interleukin-3-mediated signaling.
Gene ID:	6778
UniProt:	P42226
Pathways:	JAK-STAT Signaling , Regulation of Leukocyte Mediated Immunity , Positive Regulation of Immune Effector Process , Production of Molecular Mediator of Immune Response

Application Details

Application Notes:	ELISA 1:500-1000 IHC-P 1:200-400 IHC-F 1:100-500 IF(IHC-P) 1:50-200 IF(IHC-F) 1:50-200 IF(ICC) 1:50-200
Restrictions:	For Research Use only

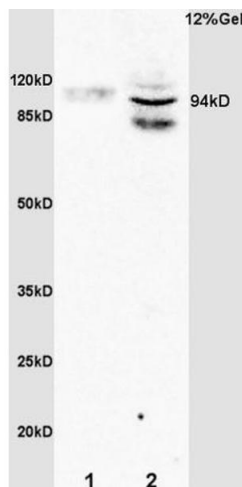
Handling

Format:	Liquid
Concentration:	1 µg/µL
Buffer:	0.01M TBS(pH 7.4) with 1 % BSA, 0.02 % Proclin300 and 50 % Glycerol.
Preservative:	ProClin
Precaution of Use:	This product contains ProClin: a POISONOUS AND HAZARDOUS SUBSTANCE, which should be handled by trained staff only.
Storage:	4 °C,-20 °C
Storage Comment:	Shipped at 4°C. Store at -20°C for one year. Avoid repeated freeze/thaw cycles.
Expiry Date:	12 months



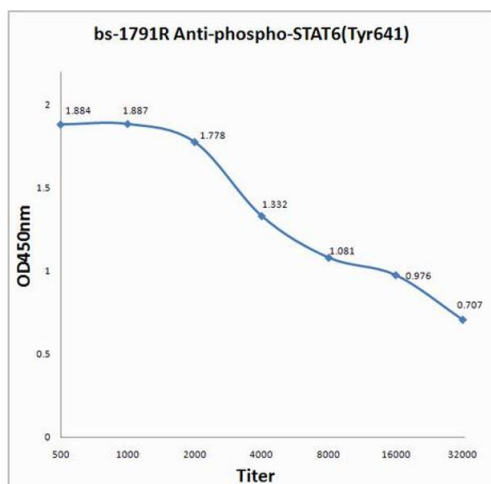
Immunohistochemistry

Image 1. Formalin-fixed and paraffin embedded human liver carcinoma tissue labeled with Anti-phospho-STAT6(Tyr641) Polyclonal Antibody, Unconjugated (ABIN734483) at 1:200 followed by conjugation to the secondary antibody, (SP-0023), and DAB staining



SDS-PAGE

Image 2. L1 rat brain lysates L2 rat liver lysates probed with Anti Phospho-STAT6(Tyr641) Polyclonal Antibody, Unconjugated (1791R) at 1:200 overnight at 4 °C. Followed by conjugation to secondary antibody at 1:3000 for 90 min at 37 °C. Predicted band 94kD. Observed band size: 94kD(ABIN734483) L1 rat brain lysates L2 rat liver lysates probed with Anti Phospho-STAT6(Tyr641) Polyclonal Antibody, Unconjugated (1791R) at 1:200 overnight at 4 °C. Followed by conjugation to secondary antibody at 1:3000 for 90 min at 37 °C. Predicted band 94kD. Observed band size: 94kD



ELISA

Image 3. Antigen: 2 μg/100 μL Primary: Antiserum, 1:500, 1:1000, 1:2000, 1:4000, 1:8000, 1:16000, 1:32000; Secondary: HRP conjugated Rabbit Anti-Goat IgG at 1: 5000; TMB staining Read the data in Microplate Reader by 450nm.

Please check the [product details page](#) for more images. Overall 4 images are available for ABIN734483.