



Datasheet for ABIN734498
anti-pan Keratin antibody



[Go to Product page](#)

7 Images

1 Publication

Overview

Quantity:	100 µL
Target:	pan Keratin (panKRT)
Reactivity:	Human, Rat, Mouse
Host:	Rabbit
Clonality:	Polyclonal
Conjugate:	This pan Keratin antibody is un-conjugated
Application:	Western Blotting (WB), Immunohistochemistry (Paraffin-embedded Sections) (IHC (p)), Immunofluorescence (Cultured Cells) (IF (cc)), Immunofluorescence (Paraffin-embedded Sections) (IF (p))

Product Details

Immunogen:	KLH conjugated synthetic peptide derived from human CK14
Isotype:	IgG
Cross-Reactivity:	Human, Mouse, Rat
Purification:	Purified by Protein A.

Target Details

Target:	pan Keratin (panKRT)
Alternative Name:	Wide Spectrum Cytokeratin (panKRT Products)
Background:	Synonyms: K14, NFJ, CK14, EBS3, EBS4, Keratin, type I cytoskeletal 14, Cytokeratin-14, CK-14, Keratin-14, KRT14

Target Details

Background: The nonhelical tail domain is involved in promoting KRT5-KRT14 filaments to self-organize into large bundles and enhances the mechanical properties involved in resilience of keratin intermediate filaments in vitro.

Gene ID: 3861

UniProt: [P02533](#)

Application Details

Application Notes: WB 1:100-1000
IHC-P 1:100-500
IF(IHC-P) 1:50-200
IF(ICC) 1:50-200

Restrictions: For Research Use only

Handling

Format: Liquid

Concentration: 1 µg/µL

Buffer: Aqueous buffered solution containing 1 % BSA, 50 % glycerol and 0.09 % sodium azide.

Preservative: Sodium azide

Precaution of Use: This product contains Sodium azide: a POISONOUS AND HAZARDOUS SUBSTANCE, which should be handled by trained staff only.

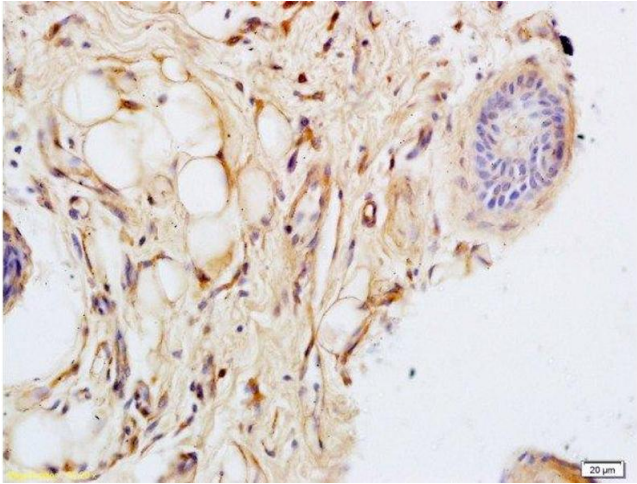
Storage: -20 °C

Storage Comment: Store at -20°C for 12 months.

Expiry Date: 12 months

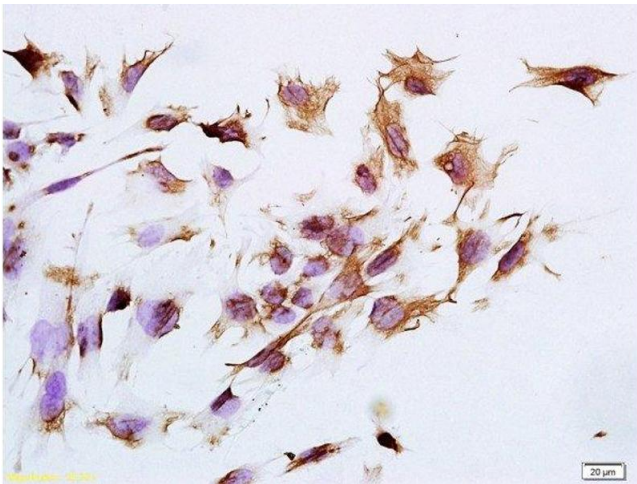
Publications

Product cited in: Liu, Han, Wang, Feng: "Down-regulation of Wnt10a affects odontogenesis and proliferation in mesenchymal cells." in: **Biochemical and biophysical research communications**, Vol. 434, Issue 4, pp. 717-21, (2013) ([PubMed](#)).



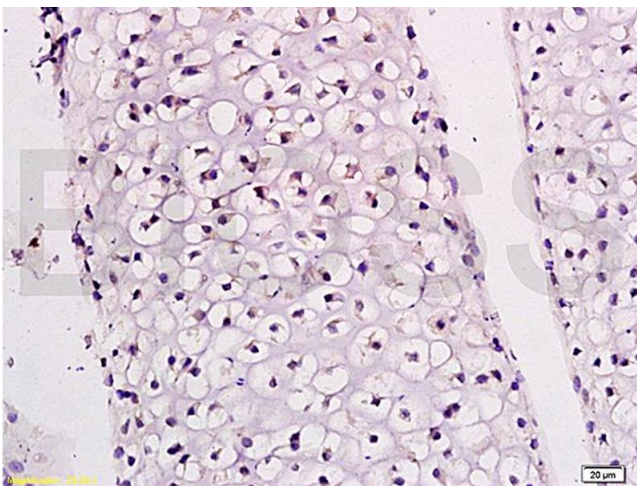
Immunohistochemistry (Paraffin-embedded Sections)

Image 1. Formalin-fixed and paraffin embedded rat skin tissue labeled with Anti-CK14 Polyclonal Antibody, Unconjugated at 1:200 followed by conjugation to the secondary antibody and DAB staining



Immunofluorescence (Cultured Cells)

Image 2. Formalin-fixed and paraffin embedded human epithelial cells tissue labeled with Anti-CK14 Polyclonal Antibody, Unconjugated at 1:300 followed by conjugation to the secondary antibody, (SP-0023), and DAB staining



Immunohistochemistry

Image 3. Formalin-fixed and paraffin embedded rat articular cartilage tissue labeled with Anti-CK14 Polyclonal Antibody, Unconjugated (ABIN734498) at 1:300 followed by conjugation to the secondary antibody and DAB staining

Please check the [product details page](#) for more images. Overall 7 images are available for ABIN734498.