

Datasheet for ABIN734633
anti-NPTN antibody (AA 51-150)[Go to Product page](#)

1 Image

Overview

Quantity:	100 µL
Target:	NPTN
Binding Specificity:	AA 51-150
Reactivity:	Human
Host:	Rabbit
Clonality:	Polyclonal
Conjugate:	This NPTN antibody is un-conjugated
Application:	Western Blotting (WB), ELISA, Immunofluorescence (Cultured Cells) (IF (cc)), Immunofluorescence (Paraffin-embedded Sections) (IF (p)), Immunohistochemistry (Paraffin- embedded Sections) (IHC (p)), Immunohistochemistry (Frozen Sections) (IHC (fro))

Product Details

Immunogen:	KLH conjugated synthetic peptide derived from human NPTN
Isotype:	IgG
Cross-Reactivity:	Human
Predicted Reactivity:	Mouse,Rat,Dog,Cow,Sheep,Pig,Horse,Chicken
Purification:	Purified by Protein A.

Target Details

Target:	NPTN
---------	------

Target Details

Alternative Name:	SDFR1/NPTN (NPTN Products)
Background:	<p>Synonyms: stromal cell derived factor receptor 1, GP55, GP65, neuroplastin, np55, np65, SDFR1, SDR1, stromal cell derived factor receptor 1, Neuroplastin, NPTN_HUMAN, SDR-1.</p> <p>Background: NPTN is a type I transmembrane protein belonging to the Ig superfamily. The protein is believed to be involved in cell-cell interactions or cell-substrate interactions. The alpha and beta transcripts show differential localization within the brain.</p>
Gene ID:	27020
UniProt:	Q9Y639
Pathways:	Regulation of long-term Neuronal Synaptic Plasticity

Application Details

Application Notes:	<p>WB 1:300-5000</p> <p>ELISA 1:500-1000</p> <p>IHC-P 1:200-400</p> <p>IHC-F 1:100-500</p> <p>IF(IHC-P) 1:50-200</p> <p>IF(IHC-F) 1:50-200</p> <p>IF(ICC) 1:50-200</p>
Restrictions:	For Research Use only

Handling

Format:	Liquid
Concentration:	1 µg/µL
Buffer:	0.01M TBS(pH 7.4) with 1 % BSA, 0.02 % Proclin300 and 50 % Glycerol.
Preservative:	ProClin
Precaution of Use:	This product contains ProClin: a POISONOUS AND HAZARDOUS SUBSTANCE, which should be handled by trained staff only.
Storage:	4 °C,-20 °C
Storage Comment:	Shipped at 4°C. Store at -20°C for one year. Avoid repeated freeze/thaw cycles.
Expiry Date:	12 months

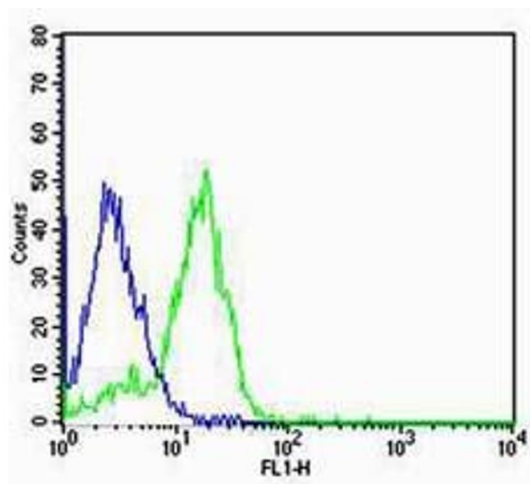


Image 1. SK-N-MC cells probed with SDFR1/NPTN Polyclonal Antibody, unconjugated at 1:100 dilution for 30 minutes compared to control cells (blue) and isotype control (orange)