

Datasheet for ABIN734678
anti-ITGAL antibody (AA 251-350)

3 Images

[Go to Product page](#)

Overview

Quantity:	100 µL
Target:	ITGAL
Binding Specificity:	AA 251-350
Reactivity:	Human, Rat, Rabbit
Host:	Rabbit
Clonality:	Polyclonal
Conjugate:	This ITGAL antibody is un-conjugated
Application:	Flow Cytometry (FACS), Immunohistochemistry (Frozen Sections) (IHC (fro)), Immunofluorescence (Cultured Cells) (IF (cc)), Immunofluorescence (Paraffin-embedded Sections) (IF (p))

Product Details

Immunogen:	KLH conjugated synthetic peptide derived from human Integrin alpha L
Isotype:	IgG
Cross-Reactivity:	Human, Rabbit, Rat
Predicted Reactivity:	Mouse,Dog,Cow,Sheep,Pig,Horse
Purification:	Purified by Protein A.

Target Details

Target:	ITGAL
---------	-------

Target Details

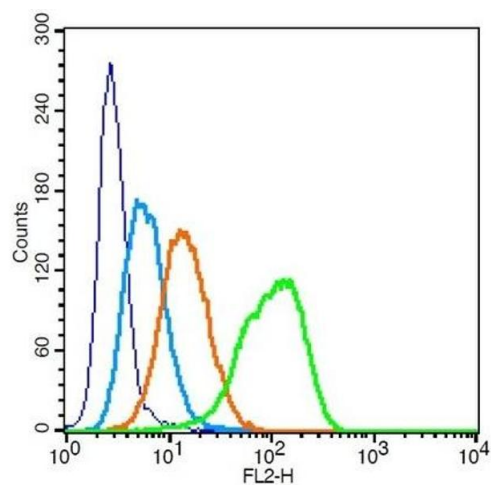
Alternative Name:	Integrin alpha L/CD11a (ITGAL Products)
Background:	<p>Synonyms: CD11A, LFA-1, LFA1A, Integrin alpha-L, CD11 antigen-like family member A, Leukocyte adhesion glycoprotein LFA-1 alpha chain, LFA-1A, Leukocyte function-associated molecule 1 alpha chain, ITGAL</p> <p>Background: Integrin alpha-L/beta-2 is a receptor for ICAM1, ICAM2, ICAM3 and ICAM4. It is involved in a variety of immune phenomena including leukocyte-endothelial cell interaction, cytotoxic T-cell mediated killing, and antibody dependent killing by granulocytes and monocytes.</p>
Gene ID:	3683
UniProt:	P20701
Pathways:	Activated T Cell Proliferation , Integrin Complex

Application Details

Application Notes:	WB 1:300-5000 FCM 1:20-100 IHC-P 1:200-400 IHC-F 1:100-500 IF(IHC-P) 1:50-200 IF(IHC-F) 1:50-200 IF(ICC) 1:50-200
Restrictions:	For Research Use only

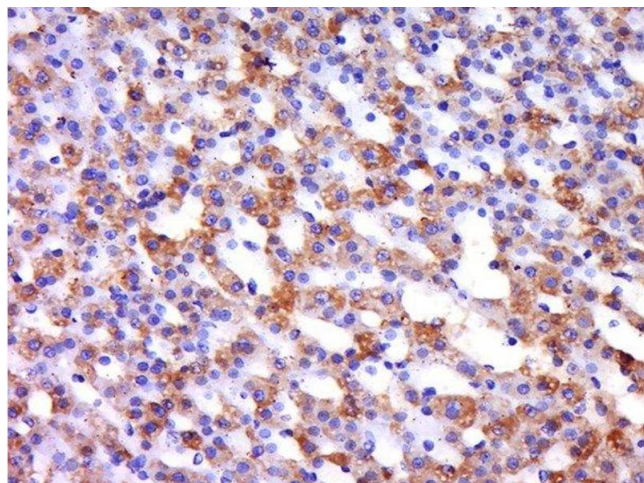
Handling

Format:	Liquid
Concentration:	1 µg/µL
Buffer:	0.01M TBS(pH 7.4) with 1 % BSA, 0.02 % Proclin300 and 50 % Glycerol.
Preservative:	ProClin
Precaution of Use:	This product contains ProClin: a POISONOUS AND HAZARDOUS SUBSTANCE, which should be handled by trained staff only.
Storage:	4 °C,-20 °C
Storage Comment:	Shipped at 4°C. Store at -20°C for one year. Avoid repeated freeze/thaw cycles.



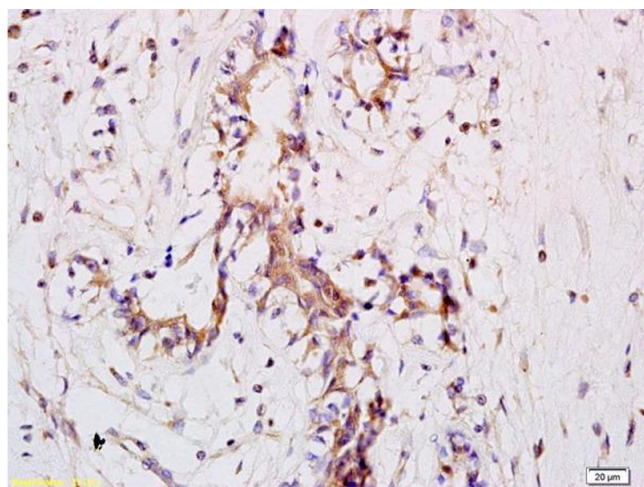
Flow Cytometry

Image 1. Human U937 cells probed with Integrin alpha L/CD11a Antibody, Unconjugated at 1:100 for 30 minutes followed by incubation with a PE Conjugated secondary (green) for 30 minutes compared to control cells (blue), secondary only (light blue) and isotype control (orange).



Immunohistochemistry (Paraffin-embedded Sections)

Image 2. Paraformaldehyde-fixed, paraffin embedded rat adrenal gland, Antigen retrieval by boiling in sodium citrate buffer (pH6) for 15min, Block endogenous peroxidase by 3% hydrogen peroxide for 30 minutes, Blocking buffer (normal goat serum) at 37°C for 20min, Antibody incubation with Rabbit Anti-Integrin alpha L/CD11a Polyclonal Antibody, Unconjugated at 1:500 overnight at 4°C, followed by a conjugated secondary and DAB staining.



Immunohistochemistry

Image 3. Formalin-fixed and paraffin embedded human breast carcinoma labeled with Anti CD11a Polyclonal Antibody, Unconjugated (ABIN734678) at 1:200 followed by conjugation to the secondary antibody and DAB staining