

Datasheet for ABIN7347993  
**anti-PTH LH antibody (AA 37-175)**[Go to Product page](#)

## 1 Image

## Overview

Quantity:	50 µg
Target:	PTH LH
Binding Specificity:	AA 37-175
Reactivity:	Human
Host:	Rabbit
Clonality:	Polyclonal
Conjugate:	This PTH LH antibody is un-conjugated
Application:	Immunohistochemistry (IHC), ELISA

## Product Details

Immunogen:	Recombinant Human Parathyroid hormone-related protein (37-175AA)
Isotype:	IgG
Cross-Reactivity:	Human
Purification:	>95%, Protein G purified

## Target Details

Target:	PTH LH
Alternative Name:	PTH LH ( <a href="#">PTH LH Products</a> )
Background:	Background: Neuroendocrine peptide which is a critical regulator of cellular and organ growth, development, migration, differentiation and survival and of epithelial calcium ion transport.

## Target Details

Regulates endochondral bone development and epithelial-mesenchymal interactions during the formation of the mammary glands and teeth. Required for skeletal homeostasis. Promotes mammary mesenchyme differentiation and bud outgrowth by modulating mesenchymal cell responsiveness to BMPs. Upregulates BMPRI1A expression in the mammary mesenchyme and this increases the sensitivity of these cells to BMPs and allows them to respond to BMP4 in a paracrine and/or autocrine fashion. BMP4 signaling in the mesenchyme, in turn, triggers epithelial outgrowth and augments MSX2 expression, which causes the mammary mesenchyme to inhibit hair follicle formation within the nipple sheath By similarity. Promotes colon cancer cell migration and invasion in an integrin alpha-6/beta-1-dependent manner through activation of Rac1.

Aliases: HHM antibody, MGC14611 antibody, Osteostatin antibody, Parathyroid hormone like hormone isoform 2 preproprotein antibody, Parathyroid hormone like hormone antibody, Parathyroid hormone like hormone isoform 1 preproprotein antibody, Parathyroid hormone like protein antibody, Parathyroid hormone like related protein antibody, Parathyroid hormone related protein antibody, Parathyroid hormone-like protein antibody, Parathyroid like protein antibody, PLP antibody, PTH related protein antibody, PTH-rP antibody, PTHLH antibody, PTHR antibody, PTHR\_HUMAN antibody, PTHrP antibody, PTHrP[107-139] antibody

UniProt: [P12272](#)

Pathways: [Hormone Activity](#), [cAMP Metabolic Process](#)

## Application Details

Application Notes: Recommended dilution: IHC:1:20-1:200,

Restrictions: For Research Use only

## Handling

Format: Liquid

Buffer: Preservative: 0.03 % Proclin 300  
Constituents: 50 % Glycerol, 0.01M PBS, PH 7.4

Preservative: ProClin

Precaution of Use: This product contains ProClin: a POISONOUS AND HAZARDOUS SUBSTANCE which should be handled by trained staff only.

Storage: -20 °C,-80 °C

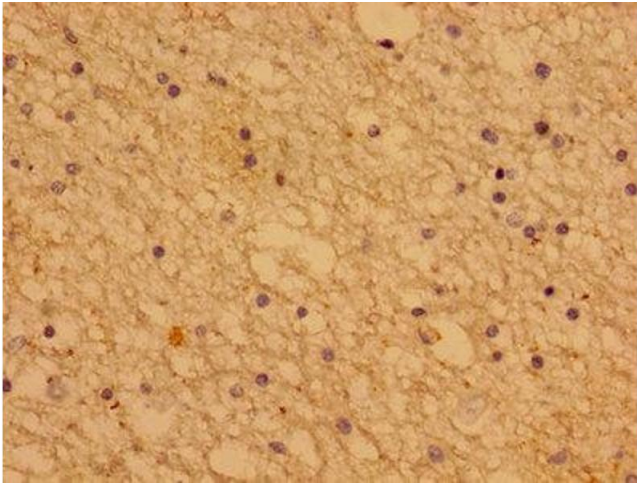
## Handling

---

Storage Comment: Upon receipt, store at -20°C or -80°C. Avoid repeated freeze.

## Images

---



### Immunohistochemistry

**Image 1.** Immunohistochemistry of paraffin-embedded human brain tissue using at dilution of 1:100