

Datasheet for ABIN734858
anti-ITGA7 antibody (AA 701-800)[Go to Product page](#)**2** Images**1** Publication

Overview

Quantity:	100 µL
Target:	ITGA7
Binding Specificity:	AA 701-800
Reactivity:	Human, Mouse, Rat
Host:	Rabbit
Clonality:	Polyclonal
Conjugate:	This ITGA7 antibody is un-conjugated
Application:	Western Blotting (WB), ELISA, Immunohistochemistry (Paraffin-embedded Sections) (IHC (p)), Immunofluorescence (Cultured Cells) (IF (cc)), Immunofluorescence (Paraffin-embedded Sections) (IF (p)), Immunohistochemistry (Frozen Sections) (IHC (fro))

Product Details

Immunogen:	KLH conjugated synthetic peptide derived from human Integrin alpha 7
Isotype:	IgG
Cross-Reactivity:	Human, Mouse, Rat
Predicted Reactivity:	Dog,Cow,Pig,Rabbit
Purification:	Purified by Protein A.

Target Details

Target:	ITGA7
---------	-------

Target Details

Alternative Name:	Integrin alpha 7/ITGA7 (ITGA7 Products)
Background:	<p>Synonyms: Integrin alpha-7, ITGA7, UNQ46/PRO768</p> <p>Background: Integrin alpha-7/beta-1 is the primary laminin receptor on skeletal myoblasts and adult myofibers. During myogenic differentiation, it may induce changes in the shape and mobility of myoblasts, and facilitate their localization at laminin-rich sites of secondary fiber formation. It is involved in the maintenance of the myofibers cytoarchitecture as well as for their anchorage, viability and functional integrity. Isoform Alpha-7X2B and isoform Alpha-7X1B promote myoblast migration on laminin 1 and laminin 2/4, but isoform Alpha-7X1B is less active on laminin 1 (In vitro). Acts as Schwann cell receptor for laminin-2. Acts as a receptor of COMP and mediates its effect on vascular smooth muscle cells (VSMCs) maturation (By similarity). Required to promote contractile phenotype acquisition in differentiated airway smooth muscle (ASM) cells.</p>
Gene ID:	3679
UniProt:	Q13683
Pathways:	Integrin Complex

Application Details

Application Notes:	WB 1:300-5000 ELISA 1:500-1000 IHC-P 1:200-400 IHC-F 1:100-500 IF(IHC-P) 1:50-200 IF(IHC-F) 1:50-200 IF(ICC) 1:50-200
Restrictions:	For Research Use only

Handling

Format:	Liquid
Concentration:	1 µg/µL
Buffer:	0.01M TBS(pH 7.4) with 1 % BSA, 0.02 % Proclin300 and 50 % Glycerol.
Preservative:	ProClin
Precaution of Use:	This product contains ProClin: a POISONOUS AND HAZARDOUS SUBSTANCE, which should be

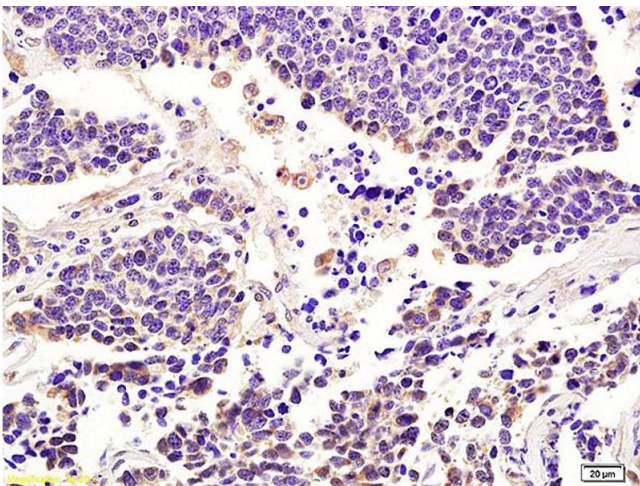
Handling

	handled by trained staff only.
Storage:	4 °C,-20 °C
Storage Comment:	Shipped at 4°C. Store at -20°C for one year. Avoid repeated freeze/thaw cycles.
Expiry Date:	12 months

Publications

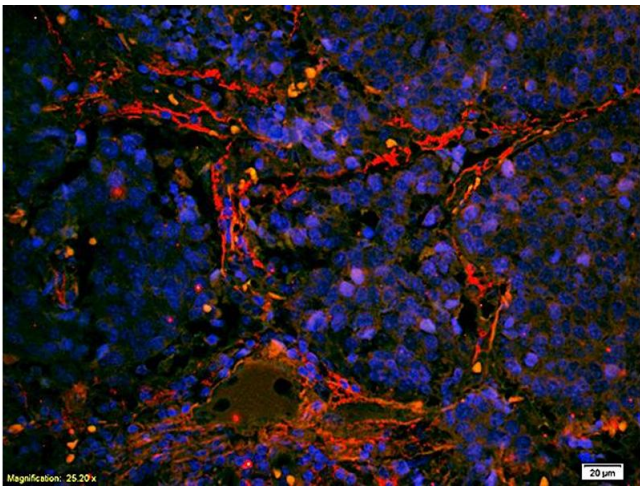
Product cited in:	Tang, Li, Wang, Threadgill, Xiao, Mou, Song, Kuang, Yang, Yang, Gao, Wang, Meng: "ART1 promotes starvation-induced autophagy: a possible protective role in the development of colon carcinoma." in: American journal of cancer research , Vol. 5, Issue 2, pp. 498-513, (2015) (PubMed).
-------------------	--

Images



Immunohistochemistry

Image 1. Formalin-fixed and paraffin embedded human lung carcinoma labeled with Anti-Integrin alpha 7/ITGA7 Polyclonal Antibody, Unconjugated (ABIN734858) at 1:200 followed by conjugation to the secondary antibody and DAB staining.



Immunofluorescence

Image 2. Formalin-fixed and paraffin embedded human lung carcinoma labeled with Anti- Integrin alpha 7/ITGA7 Polyclonal Antibody, Unconjugated (ABIN734858) at 1:200 followed by conjugation to the secondary antibody Goat Anti-Rabbit IgG, Cy3 conjugated used at 1:200 dilution for 40 minutes at 37°C