

Datasheet for ABIN734873
anti-Neuregulin 1 antibody (AA 221-320)[Go to Product page](#)

3 Images

Overview

| | |
|----------------------|---|
| Quantity: | 100 µL |
| Target: | Neuregulin 1 (NRG1) |
| Binding Specificity: | AA 221-320 |
| Reactivity: | Human, Rat, Mouse |
| Host: | Rabbit |
| Clonality: | Polyclonal |
| Conjugate: | This Neuregulin 1 antibody is un-conjugated |
| Application: | Western Blotting (WB), ELISA, Flow Cytometry (FACS), Immunohistochemistry (Paraffin-embedded Sections) (IHC (p)), Immunofluorescence (Cultured Cells) (IF (cc)), Immunofluorescence (Paraffin-embedded Sections) (IF (p)), Immunohistochemistry (Frozen Sections) (IHC (fro)) |

Product Details

| | |
|-----------------------|--|
| Immunogen: | KLH conjugated synthetic peptide derived from mouse Pro-NRG1 |
| Isotype: | IgG |
| Cross-Reactivity: | Human, Mouse, Rat |
| Predicted Reactivity: | Dog,Chicken,Rabbit |
| Purification: | Purified by Protein A. |

Target Details

| | |
|---------|---------------------|
| Target: | Neuregulin 1 (NRG1) |
|---------|---------------------|

Target Details

| | |
|-------------------|---|
| Alternative Name: | Pro-NGR1 (NRG1 Products) |
| Background: | <p>Synonyms: GGF, HGL, HRG, NDF, ARIA, GGF2, HRG1, HRGA, SMDF, MST131, MSTP131, NRG1-IT2, Pro-neuregulin-1, membrane-bound isoform, Pro-NGR1, NRG1</p> <p>Background: Direct ligand for ERBB3 and ERBB4 tyrosine kinase receptors. Concomitantly recruits ERBB1 and ERBB2 coreceptors, resulting in ligand-stimulated tyrosine phosphorylation and activation of the ERBB receptors. The multiple isoforms perform diverse functions such as inducing growth and differentiation of epithelial, glial, neuronal, and skeletal muscle cells, inducing expression of acetylcholine receptor in synaptic vesicles during the formation of the neuromuscular junction, stimulating lobuloalveolar budding and milk production in the mammary gland and inducing differentiation of mammary tumor cells, stimulating Schwann cell proliferation, implication in the development of the myocardium such as trabeculation of the developing heart. Isoform 10 may play a role in motor and sensory neuron development.</p> |
| Gene ID: | 211323 |
| UniProt: | Q6DR98 |
| Pathways: | RTK Signaling , Fc-epsilon Receptor Signaling Pathway , EGFR Signaling Pathway , Neurotrophin Signaling Pathway , Regulation of Muscle Cell Differentiation |

Application Details

| | |
|--------------------|---|
| Application Notes: | WB 1:300-5000 ELISA 1:500-1000 FCM 1:20-100 IHC-P 1:200-400 IHC-F 1:100-500 IF(IHC-P) 1:50-200 IF(IHC-F) 1:50-200 IF(ICC) 1:50-200 |
| Restrictions: | For Research Use only |

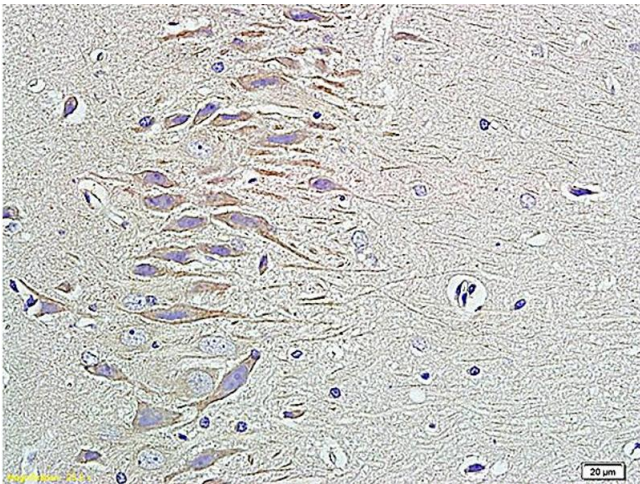
Handling

| | |
|----------------|---|
| Format: | Liquid |
| Concentration: | 1 µg/µL |
| Buffer: | 0.01M TBS(pH 7.4) with 1 % BSA, 0.02 % Proclin300 and 50 % Glycerol. |

Handling

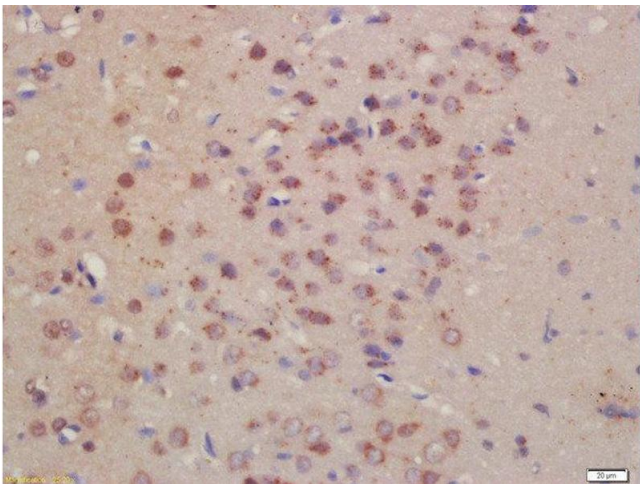
| | |
|--------------------|--|
| Preservative: | ProClin |
| Precaution of Use: | This product contains ProClin: a POISONOUS AND HAZARDOUS SUBSTANCE, which should be handled by trained staff only. |
| Storage: | 4 °C,-20 °C |
| Storage Comment: | Shipped at 4°C. Store at -20°C for one year. Avoid repeated freeze/thaw cycles. |
| Expiry Date: | 12 months |

Images



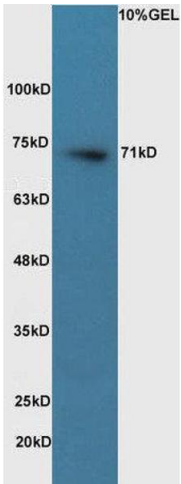
Immunohistochemistry

Image 1. Formalin-fixed and paraffin embedded rat brain labeled with Anti-HRG BETA1, Unconjugated (ABIN734873) followed by conjugation to the secondary antibody and DAB staining



Immunohistochemistry (Paraffin-embedded Sections)

Image 2. Formalin-fixed and paraffin embedded rat brain labeled with Rabbit Anti- Pro-Neuregulin Polyclonal Antibody, Unconjugated at 1:200 followed by conjugation to the secondary antibody and DAB staining



Western Blotting

Image 3. Raji lysates probed with Anti- Pro-Neuregulin Polyclonal Antibody, Unconjugated at 1:5000 for 90 min at 37°C