

Datasheet for ABIN734933
anti-ICAM-3/CD50 antibody (AA 30-130)[Go to Product page](#)

2 Images

Overview

Quantity:	100 µL
Target:	ICAM-3/CD50 (ICAM3)
Binding Specificity:	AA 30-130
Reactivity:	Human
Host:	Rabbit
Clonality:	Polyclonal
Conjugate:	This ICAM-3/CD50 antibody is un-conjugated
Application:	ELISA, Immunohistochemistry (Paraffin-embedded Sections) (IHC (p)), Immunocytochemistry (ICC), Immunohistochemistry (Frozen Sections) (IHC (fro)), Immunofluorescence (Paraffin-embedded Sections) (IF (p)), Immunofluorescence (Cultured Cells) (IF (cc))

Product Details

Immunogen:	KLH conjugated synthetic peptide derived from human CD50
Isotype:	IgG
Cross-Reactivity:	Human
Purification:	Purified by Protein A.

Target Details

Target:	ICAM-3/CD50 (ICAM3)
Alternative Name:	ICAM3/CD50 (ICAM3 Products)

Target Details

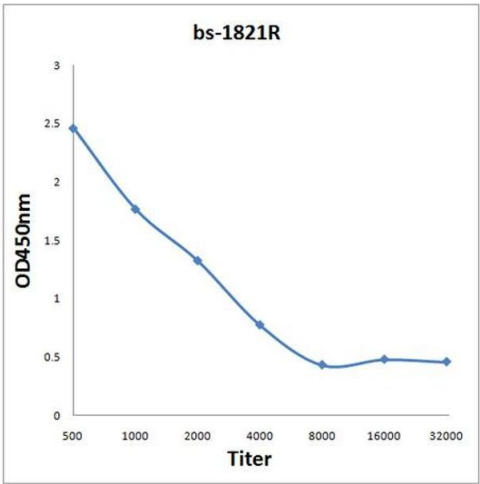
Background:	<p>Synonyms: intercellular adhesion molecules-3, ICAM-3, ICAM 3, CD50, CDW 50, CDW50, ICAM 3, ICAM R, ICAMR.</p> <p>Background: All ICAM proteins are type I transmembrane glycoproteins, contain 2-9 immunoglobulin-like C2-type domains, and bind to the leukocyte adhesion LFA1 protein. ICAM3 is constitutively and abundantly expressed by all leucocytes and may be the most important ligand for LFA1 in the initiation of the immune response. It functions not only as an adhesion molecule, but also as a potent signalling molecule. Upon stimulation by a physiological stimulus it becomes rapidly and transiently phosphorylated on serine residues. N-glycosylated, glycans consist of a mixture of tri- and tetra-antennary complex-type chains and high-mannose chains.</p>
Gene ID:	3385

Application Details

Application Notes:	<p>ELISA 1:500-1000</p> <p>IHC-P 1:200-400</p> <p>IHC-F 1:100-500</p> <p>IF(IHC-P) 1:50-200</p> <p>IF(IHC-F) 1:50-200</p> <p>IF(ICC) 1:50-200</p> <p>ICC 1:100-500</p>
Restrictions:	For Research Use only

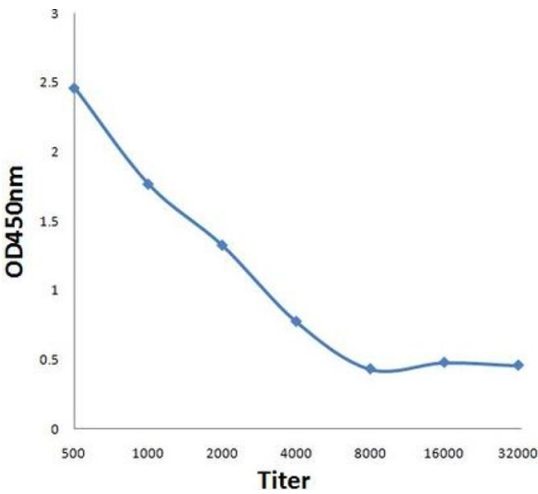
Handling

Format:	Liquid
Concentration:	1 µg/µL
Buffer:	0.01M TBS(pH 7.4) with 1 % BSA, 0.02 % Proclin300 and 50 % Glycerol.
Preservative:	ProClin
Precaution of Use:	This product contains ProClin: a POISONOUS AND HAZARDOUS SUBSTANCE, which should be handled by trained staff only.
Storage:	4 °C,-20 °C
Storage Comment:	Shipped at 4°C. Store at -20°C for one year. Avoid repeated freeze/thaw cycles.
Expiry Date:	12 months



ELISA

Image 1. Antigen: 0.2 µg/100 µL Primary: Antiserum, 1:500, 1:1000, 1:2000, 1:4000, 1:8000, 1:16000, 1:32000; Secondary: HRP conjugated Goat-Anti-Rabbit IgG at 1: 5000; TMB staining; Read the data in MicroplateReader by 450



ELISA

Image 2. Antigen: 0.2ug/100ul, Primary: Antiserum, 1:500, 1:1000, 1:2000, 1:4000, 1:8000, 1:16000, 1:32000, Secondary: HRP conjugated Goat-Anti-Rabbit IgG at 1: 5000, TMB staining, Read the data in MicroplateReader by 450nm