

Datasheet for ABIN734978  
**anti-IMMT antibody (AA 241-340)**[Go to Product page](#)

## 4 Images

## Overview

Quantity:	100 µL
Target:	IMMT
Binding Specificity:	AA 241-340
Reactivity:	Human, Mouse, Rat
Host:	Rabbit
Clonality:	Polyclonal
Conjugate:	This IMMT antibody is un-conjugated
Application:	Western Blotting (WB), ELISA, Immunohistochemistry (Paraffin-embedded Sections) (IHC (p)), Immunofluorescence (Cultured Cells) (IF (cc)), Immunofluorescence (Paraffin-embedded Sections) (IF (p)), Immunohistochemistry (Frozen Sections) (IHC (fro))

## Product Details

Immunogen:	KLH conjugated synthetic peptide derived from human Mitofilin
Isotype:	IgG
Cross-Reactivity:	Human, Mouse, Rat
Predicted Reactivity:	Dog,Cow
Purification:	Purified by Protein A.

## Target Details

Target:	IMMT
---------	------

## Target Details

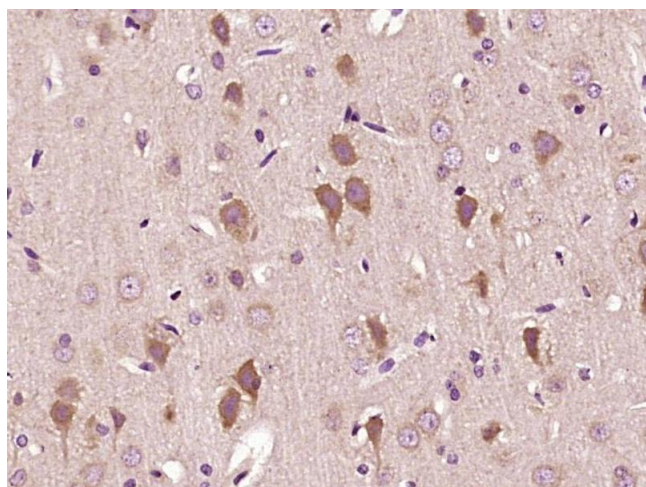
Alternative Name:	Mitofilin/IMMT ( <a href="#">IMMT Products</a> )
Background:	<p>Synonyms: HMP, P87, P89, PIG4, Mic60, PIG52, MINOS2, P87/89, MICOS complex subunit MIC60, Cell proliferation-inducing gene 4/52 protein, Mitochondrial inner membrane protein, Mitofilin, IMMT</p> <p>Background: Component of the MICOS complex, a large protein complex of the mitochondrial inner membrane that plays crucial roles in the maintenance of crista junctions, inner membrane architecture, and formation of contact sites to the outer membrane. Plays an important role in the maintenance of the MICOS complex stability and the mitochondrial cristae morphology (PubMed:22114354, PubMed:25781180).</p>
Gene ID:	10989
UniProt:	<a href="#">Q16891</a>

## Application Details

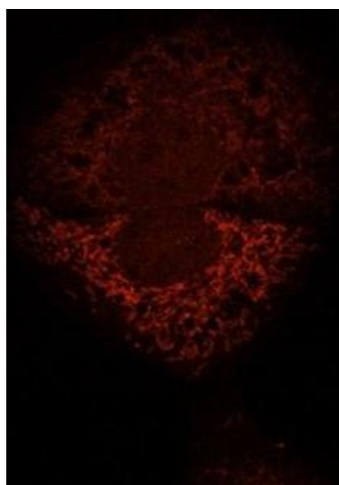
Application Notes:	WB 1:300-5000 ELISA 1:500-1000 IHC-P 1:200-400 IHC-F 1:100-500 IF(IHC-P) 1:50-200 IF(IHC-F) 1:50-200 IF(ICC) 1:50-200
Restrictions:	For Research Use only

## Handling

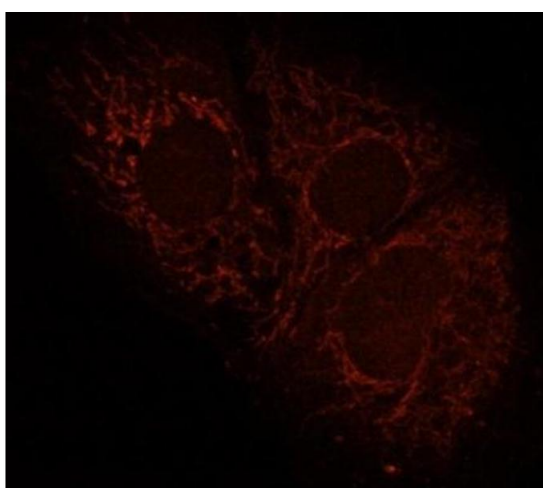
Format:	Liquid
Concentration:	1 µg/µL
Buffer:	0.01M TBS( pH 7.4) with 1 % BSA, 0.02 % Proclin300 and 50 % Glycerol.
Preservative:	ProClin
Precaution of Use:	This product contains ProClin: a POISONOUS AND HAZARDOUS SUBSTANCE, which should be handled by trained staff only.
Storage:	4 °C,-20 °C
Storage Comment:	Shipped at 4°C. Store at -20°C for one year. Avoid repeated freeze/thaw cycles.

**Immunohistochemistry (Paraffin-embedded Sections)**

**Image 1.** Paraformaldehyde-fixed, paraffin embedded Rat brain Antigen retrieval by boiling in sodium citrate buffer (pH6.0) for 15min Block endogenous peroxidase by 3% hydrogen peroxide for 20 minutes Blocking buffer (normal goat serum) at 37°C for 30min Antibody incubation with Mitofilin/IMMT Polyclonal Antibody, Unconjugated at 1:400 overnight at 4°C, DAB staining.

**Immunofluorescence (Cultured Cells)**

**Image 2.** Human HepG2 cells fixed with 3.7% Formaldehyde in medium, blocking performed with 10% NGS in 1x PBS buffer + 0.1% Tween20. Incubated with Anti-Mitofilin/IMMT Polyclonal Antibody (ABIN734978) at a 1:10 dilution for 1hr at RT, followed by Anti-Rabbit secondary

**Immunofluorescence (Cultured Cells)**

**Image 3.** Human HepG2 cells fixed with 3.7% Formaldehyde in medium, blocking performed with 10% NGS in 1x PBS buffer + 0.1% Tween20. Incubated with Anti-Mitofilin/IMMT Polyclonal Antibody (ABIN734978) at a 1:10 dilution for 1hr at RT, followed by Anti-Rabbit secondary

Please check the [product details page](#) for more images. Overall 4 images are available for ABIN734978.