

Datasheet for ABIN735188
anti-Lamin A/C antibody (AA 1-100)[2 Images](#)[1 Publication](#)[Go to Product page](#)

Overview

Quantity:	100 µL
Target:	Lamin A/C (LMNA)
Binding Specificity:	AA 1-100
Reactivity:	Human, Mouse, Rat
Host:	Rabbit
Clonality:	Polyclonal
Conjugate:	This Lamin A/C antibody is un-conjugated
Application:	Western Blotting (WB), ELISA, Immunohistochemistry (Paraffin-embedded Sections) (IHC (p)), Immunohistochemistry (Frozen Sections) (IHC (fro)), Immunofluorescence (Cultured Cells) (IF (cc)), Immunofluorescence (Paraffin-embedded Sections) (IF (p))

Product Details

Immunogen:	KLH conjugated synthetic peptide derived from human lamin A
Isotype:	IgG
Cross-Reactivity:	Human, Mouse, Rat
Purification:	Purified by Protein A.

Target Details

Target:	Lamin A/C (LMNA)
Alternative Name:	lamin A/C (LMNA Products)

Target Details

Background:	<p>Synonyms: FPL, IDC, LFP, CDDC, EMD2, FPLD, HGPS, LDP1, LMN1, LMNC, PRO1, CDCD1, CMD1A, FPLD2, LMNL1, CMT2B1, LGMD1B, Prelamin-A/C, LMNA</p> <p>Background: Lamins are components of the nuclear lamina, a fibrous layer on the nucleoplasmic side of the inner nuclear membrane, which is thought to provide a framework for the nuclear envelope and may also interact with chromatin. Lamin A and C are present in equal amounts in the lamina of mammals. Plays an important role in nuclear assembly, chromatin organization, nuclear membrane and telomere dynamics. Required for normal development of peripheral nervous system and skeletal muscle and for muscle satellite cell proliferation. Required for osteoblastogenesis and bone formation. Also prevents fat infiltration of muscle and bone marrow, helping to maintain the volume and strength of skeletal muscle and bone. Prelamin-A/C can accelerate smooth muscle cell senescence. It acts to disrupt mitosis and induce DNA damage in vascular smooth muscle cells (VSMCs), leading to mitotic failure, genomic instability, and premature senescence.</p>
Gene ID:	4000
UniProt:	P02545
Pathways:	Apoptosis , Caspase Cascade in Apoptosis , ER-Nucleus Signaling , Protein targeting to Nucleus

Application Details

Application Notes:	<p>WB 1:300-5000</p> <p>ELISA 1:500-1000</p> <p>IHC-P 1:200-400</p> <p>IHC-F 1:100-500</p> <p>IF(IHC-P) 1:50-200</p> <p>IF(IHC-F) 1:50-200</p> <p>IF(ICC) 1:50-200</p>
Restrictions:	For Research Use only

Handling

Format:	Liquid
Concentration:	1 µg/µL
Buffer:	0.01M TBS(pH 7.4) with 1 % BSA, 0.02 % Proclin300 and 50 % Glycerol.
Preservative:	ProClin

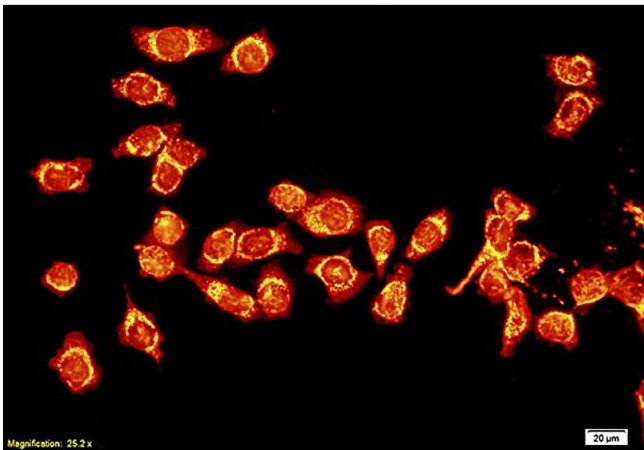
Handling

Precaution of Use:	This product contains ProClin: a POISONOUS AND HAZARDOUS SUBSTANCE, which should be handled by trained staff only.
Storage:	4 °C,-20 °C
Storage Comment:	Shipped at 4°C. Store at -20°C for one year. Avoid repeated freeze/thaw cycles.
Expiry Date:	12 months

Publications

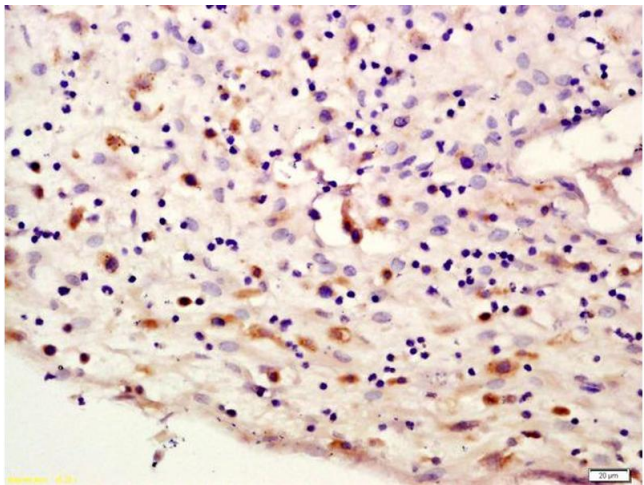
Product cited in:	Yi, Pan, Pan, Song, Hu, Wang, Pan, Lu: "BmICE-2 is a novel pro-apoptotic caspase involved in apoptosis in the silkworm, Bombyx mori." in: Biochemical and biophysical research communications , Vol. 445, Issue 1, pp. 100-6, (2014) (PubMed).
-------------------	---

Images



Immunofluorescence

Image 1. Formalin-fixed and paraffin embedded human tongue squamous carcinoma cells labeled with Anti-Lamin A, Unconjugated (ABIN735188) followed by conjugation to the secondary antibody



Immunohistochemistry

Image 2. Formalin-fixed and paraffin embedded human placenta labeled with Anti-lamin A/C Polyclonal Antibody, Unconjugated (ABIN735188) at 1:200 followed by conjugation to the secondary antibody and DAB staining