



[Go to Product page](#)

Datasheet for ABIN735203

## anti-Lamin B1 antibody (AA 361-460)

### 2 Images

#### Overview

Quantity:	100 µL
Target:	Lamin B1 (LMNB1)
Binding Specificity:	AA 361-460
Reactivity:	Human, Mouse, Rat
Host:	Rabbit
Clonality:	Polyclonal
Conjugate:	This Lamin B1 antibody is un-conjugated
Application:	Western Blotting (WB), ELISA, Immunohistochemistry (Paraffin-embedded Sections) (IHC (p)), Flow Cytometry (FACS), Immunohistochemistry (Frozen Sections) (IHC (fro)), Immunofluorescence (Cultured Cells) (IF (cc)), Immunofluorescence (Paraffin-embedded Sections) (IF (p))

#### Product Details

Immunogen:	KLH conjugated synthetic peptide derived from human Lamin B1
Isotype:	IgG
Cross-Reactivity:	Human, Mouse, Rat
Predicted Reactivity:	Cow,Pig
Purification:	Purified by Protein A.

#### Target Details

Target:	Lamin B1 (LMNB1)
---------	------------------

## Target Details

---

Alternative Name:	Lamin B1 ( <a href="#">LMNB1 Products</a> )
Background:	Synonyms: LMN, ADLD, LMN2, LMNB, Lamin-B1, LMNB1 Background: Lamins are components of the nuclear lamina, a fibrous layer on the nucleoplasmic side of the inner nuclear membrane, which is thought to provide a framework for the nuclear envelope and may also interact with chromatin.
Gene ID:	4001
UniProt:	<a href="#">P20700</a>
Pathways:	<a href="#">Apoptosis, Caspase Cascade in Apoptosis</a>

## Application Details

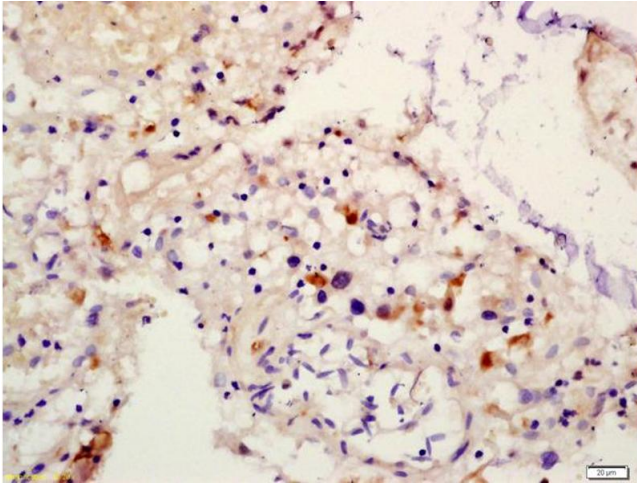
---

Application Notes:	WB 1:300-5000 ELISA 1:500-1000 FCM 1:20-100 IHC-P 1:200-400 IHC-F 1:100-500 IF(IHC-P) 1:50-200 IF(IHC-F) 1:50-200 IF(ICC) 1:50-200
Restrictions:	For Research Use only

## Handling

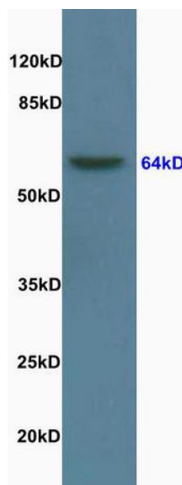
---

Format:	Liquid
Concentration:	1 µg/µL
Buffer:	0.01M TBS( pH 7.4) with 1 % BSA, 0.02 % Proclin300 and 50 % Glycerol.
Preservative:	ProClin
Precaution of Use:	This product contains ProClin: a POISONOUS AND HAZARDOUS SUBSTANCE, which should be handled by trained staff only.
Storage:	4 °C, -20 °C
Storage Comment:	Shipped at 4°C. Store at -20°C for one year. Avoid repeated freeze/thaw cycles.
Expiry Date:	12 months



### Immunohistochemistry

**Image 1.** Formalin-fixed and paraffin embedded human placenta labeled with Anti-Lamin B [Nuclear Envelope Marker] Polyclonal Antibody, Unconjugated (ABIN735203) at 1:200 followed by conjugation to the secondary antibody and DAB stainin



### SDS-PAGE

**Image 2.** Rat brain lysate probed with Anti Lamin B [Nuclear Envelope Marker] Polyclonal Antibody, Unconjugated (ABIN735203) at 1:200 in 4 °C. Followed by conjugation to secondary antibody at 1:3000 90min in 37 °C. Predicted band 64kD. Observed band size: 64kD