

Datasheet for ABIN735338

anti-Midkine antibody[Go to Product page](#)

1 Image

Overview

Quantity:	100 µL
Target:	Midkine (MDK)
Reactivity:	Human, Mouse, Rat
Host:	Rabbit
Clonality:	Polyclonal
Conjugate:	This Midkine antibody is un-conjugated
Application:	Immunofluorescence (Paraffin-embedded Sections) (IF (p)), Immunohistochemistry (Paraffin-embedded Sections) (IHC (p))

Product Details

Immunogen:	KLH conjugated synthetic peptide derived from mouse Midkine
Isotype:	IgG
Cross-Reactivity:	Human, Mouse, Rat
Purification:	Purified by Protein A.

Target Details

Target:	Midkine (MDK)
Alternative Name:	Midkine (MDK Products)
Background:	Synonyms: MK, ARAP, NEGF2, Midkine, Amphiregulin-associated protein, Midgestation and kidney protein, Neurite outgrowth-promoting factor 2, Neurite outgrowth-promoting protein, MDK, MK1

Target Details

Background: Developmentally regulated, secreted growth factor homologous to pleiotrophin (PTN), which has heparin binding activity. Binds anaplastic lymphoma kinase (ALK) which induces ALK activation and subsequent phosphorylation of the insulin receptor substrate (IRS1), followed by the activation of mitogen-activated protein kinase (MAPK) and PI3-kinase, and the induction of cell proliferation. Involved in neointima formation after arterial injury, possibly by mediating leukocyte recruitment. Also involved in early fetal adrenal gland development (By similarity).

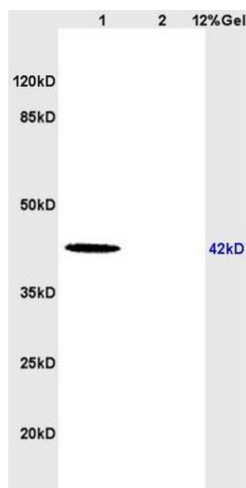
Gene ID:	4192
UniProt:	P21741
Pathways:	RTK Signaling , M Phase , Skeletal Muscle Fiber Development

Application Details

Application Notes:	WB 1:100-1000 IHC-P 1:100-500 IF(IHC-P) 1:50-200
Restrictions:	For Research Use only

Handling

Format:	Liquid
Concentration:	1 µg/µL
Buffer:	Aqueous buffered solution containing 1 % BSA, 50 % glycerol and 0.09 % sodium azide.
Preservative:	Sodium azide
Precaution of Use:	This product contains Sodium azide: a POISONOUS AND HAZARDOUS SUBSTANCE, which should be handled by trained staff only.
Storage:	-20 °C
Storage Comment:	Store at -20°C for 12 months.
Expiry Date:	12 months



SDS-PAGE

Image 1. Lane 1: human colon carcinoma lysates Lane 2: rat brain lysates probed with Anti Midkine Polyclonal Antibody, Unconjugated (ABIN735338) at 1:200 in 4 °C. Followed by conjugation to secondary antibody at 1:3000 90min in 37 °C. Predicted band 42kD. Observed band size: 42kD.