



Datasheet for ABIN735623
anti-PDCD1LG2 antibody (AA 41-150)



[Go to Product page](#)

1 Image

Overview

Quantity:	100 µL
Target:	PDCD1LG2
Binding Specificity:	AA 41-150
Reactivity:	Human
Host:	Rabbit
Clonality:	Polyclonal
Conjugate:	This PDCD1LG2 antibody is un-conjugated
Application:	ELISA, Immunohistochemistry (Paraffin-embedded Sections) (IHC (p))

Product Details

Immunogen:	KLH conjugated synthetic peptide derived from human B7-DC
Isotype:	IgG
Cross-Reactivity:	Human
Predicted Reactivity:	Mouse,Rat,Cow
Purification:	Purified by Protein A.

Target Details

Target:	PDCD1LG2
Alternative Name:	PDL2/B7-DC (PDCD1LG2 Products)
Background:	Synonyms: B7DC, Btdc, PDL2, CD273, PD-L2, PDCD1L2, bA574F11.2, Programmed cell death 1

Target Details

ligand 2, PD-1 ligand 2, PDCD1 ligand 2, Programmed death ligand 2, Butyrophilin B7-DC, B7-DC, PDCD1LG2

Background: Involved in the costimulatory signal, essential for T-cell proliferation and IFNG production in a PDCD1-independent manner. Interaction with PDCD1 inhibits T-cell proliferation by blocking cell cycle progression and cytokine production (By similarity).

Gene ID: 80380

UniProt: [Q9BQ51](#)

Application Details

Application Notes: ELISA 1:500-1000
IHC-P 1:200-400

Restrictions: For Research Use only

Handling

Format: Liquid

Concentration: 1 µg/µL

Buffer: 0.01M TBS(pH 7.4) with 1 % BSA, 0.02 % Proclin300 and 50 % Glycerol.

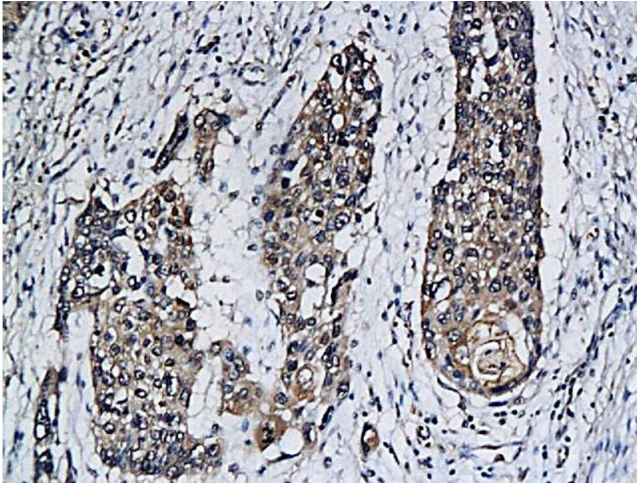
Preservative: ProClin

Precaution of Use: This product contains ProClin: a POISONOUS AND HAZARDOUS SUBSTANCE, which should be handled by trained staff only.

Storage: 4 °C,-20 °C

Storage Comment: Shipped at 4°C. Store at -20°C for one year. Avoid repeated freeze/thaw cycles.

Expiry Date: 12 months



Immunohistochemistry

Image 1. Formalin-fixed and paraffin embedded human cervical cancer labeled with Anti-B7-DC/CD273/PDL2, Unconjugated (ABIN735623) followed by conjugation to the secondary antibody