

Datasheet for ABIN7357482  
**anti-TNRC6A antibody (AA 1-161)**[Go to Product page](#)

## 2 Images

## Overview

Quantity:	50 µg
Target:	TNRC6A
Binding Specificity:	AA 1-161
Reactivity:	Human
Host:	Rabbit
Clonality:	Polyclonal
Conjugate:	This TNRC6A antibody is un-conjugated
Application:	ELISA, Immunohistochemistry (IHC), Immunofluorescence (IF)

## Product Details

Immunogen:	Recombinant Human Trinucleotide repeat-containing gene 6A protein (1-161AA)
Isotype:	IgG
Cross-Reactivity:	Human
Purification:	>95%, Protein G purified

## Target Details

Target:	TNRC6A
Alternative Name:	TNRC6A ( <a href="#">TNRC6A Products</a> )
Background:	Background: Plays a role in RNA-mediated gene silencing by both micro-RNAs (miRNAs) and short interfering RNAs (siRNAs). Required for miRNA-dependent repression of translation and

## Target Details

for siRNA-dependent endonucleolytic cleavage of complementary mRNAs by argonaute family proteins. As scaffolding protein associates with argonaute proteins bound to partially complementary mRNAs and simultaneously can recruit CCR4-NOT and PAN deadenylase complexes.

Aliases: CAG repeat protein 26 antibody, CAGH26 antibody, DKFZp666E117 antibody, EDIE antibody, EMSY interactor protein antibody, FLJ22043 antibody, Glycine tryptophan protein of 182 kDa antibody, Glycine-tryptophan protein of 182 kDa antibody, GW1 antibody, GW182 antibody, GW182 autoantigen antibody, Hypothetical protein DKFZp566M143 antibody, KIAA1460 antibody, MGC75384 antibody, OTTHUMP00000122485 antibody, OTTHUMP00000195164 antibody, OTTHUMP00000195165 antibody, Protein GW1 antibody, TNRC6A\_HUMAN antibody, TNRC 6A antibody, TNRC6 antibody, Tnrc6a antibody, Trinucleotide repeat containing 6A antibody, Trinucleotide repeat containing gene 6A protein antibody, Trinucleotide repeat-containing gene 6A protein antibody

UniProt: [Q8NDV7](#)

## Application Details

Application Notes: Recommended dilution: IHC:1:20-1:200, IF:1:200-1:500,

Restrictions: For Research Use only

## Handling

Format: Liquid

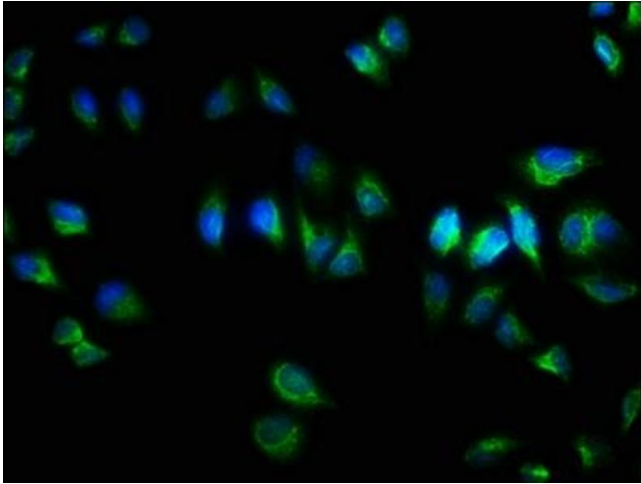
Buffer: Preservative: 0.03 % Proclin 300  
Constituents: 50 % Glycerol, 0.01M PBS, PH 7.4

Preservative: ProClin

Precaution of Use: This product contains ProClin: a POISONOUS AND HAZARDOUS SUBSTANCE which should be handled by trained staff only.

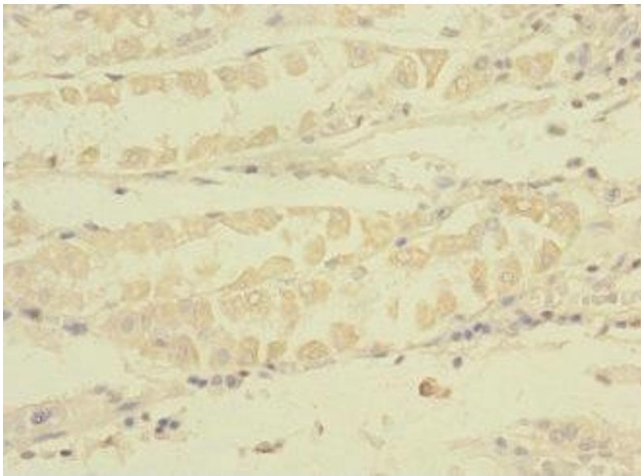
Storage: -20 °C,-80 °C

Storage Comment: Upon receipt, store at -20°C or -80°C. Avoid repeated freeze.



### Immunofluorescence

**Image 1.** Immunofluorescence staining of HeLa cells with at 1:333, counter-stained with DAPI. The cells were fixed in 4% formaldehyde, permeabilized using 0.2% Triton X-100 and blocked in 10% normal Goat Serum. The cells were then incubated with the antibody overnight at 4°C. The secondary antibody was Alexa Fluor 488-conjugated AffiniPure Goat Anti-Rabbit IgG(H+L).



### Immunohistochemistry

**Image 2.** Immunohistochemistry of paraffin-embedded human gastric cancer using at dilution of 1:100