

Datasheet for ABIN735788

anti-Prostaglandin E Synthase antibody (AA 85-152)[Go to Product page](#)**3** Images

Overview

Quantity:	100 µL
Target:	Prostaglandin E Synthase (PTGES)
Binding Specificity:	AA 85-152
Reactivity:	Human
Host:	Rabbit
Clonality:	Polyclonal
Conjugate:	This Prostaglandin E Synthase antibody is un-conjugated
Application:	Western Blotting (WB), Immunohistochemistry (Paraffin-embedded Sections) (IHC (p)), ELISA

Product Details

Immunogen:	KLH conjugated synthetic peptide derived from human PTGES
Isotype:	IgG
Cross-Reactivity:	Human
Predicted Reactivity:	Mouse,Rat,Pig,Guinea Pig
Purification:	Purified by Protein A.

Target Details

Target:	Prostaglandin E Synthase (PTGES)
Alternative Name:	PTGES (PTGES Products)
Background:	Synonyms: PGES, MPGES, PIG12, PP102, PP1294, MGST-IV, MGST1L1, TP53I12, mPGES-1,

Target Details

MGST1-L1, Prostaglandin E synthase, Microsomal glutathione S-transferase 1-like 1, Microsomal prostaglandin E synthase 1, p53-induced gene 12 protein, PTGES, MPGES1

Background: Prostaglandin E synthase catalyses conversion of COX derived PGH2 to PGE2. It is a member of the MAPEG family. It may contribute to the pathogenesis of collagen induced arthritis and mediate acute pain during inflammatory responses. The protein encoded by this gene is a glutathione-dependent prostaglandin E synthase. The expression of this gene has been shown to be induced by proinflammatory cytokine interleukin 1 beta (IL1B). Its expression can also be induced by tumor suppressor protein TP53, and may be involved in TP53 induced apoptosis. Knockout studies in mice suggest that this gene may contribute to the pathogenesis of collagen-induced arthritis and mediate acute pain during inflammatory responses.

Gene ID: 9536

UniProt: [O14684](#)

Application Details

Application Notes: WB 1:300-5000
ELISA 1:500-1000
IHC-P 1:200-400

Restrictions: For Research Use only

Handling

Format: Liquid

Concentration: 1 µg/µL

Buffer: 0.01M TBS(pH 7.4) with 1 % BSA, 0.02 % Proclin300 and 50 % Glycerol.

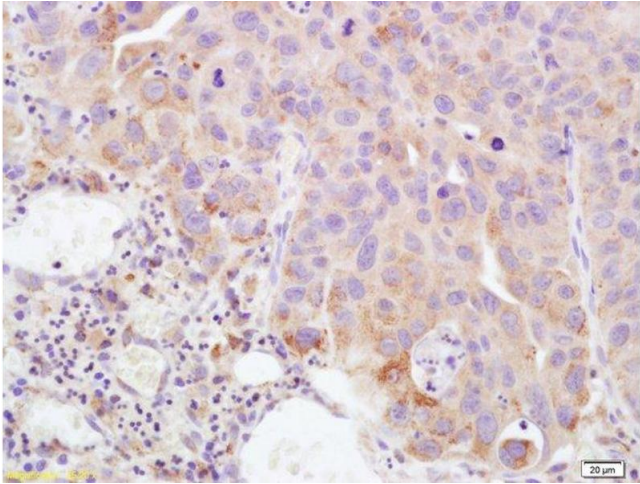
Preservative: ProClin

Precaution of Use: This product contains ProClin: a POISONOUS AND HAZARDOUS SUBSTANCE, which should be handled by trained staff only.

Storage: 4 °C,-20 °C

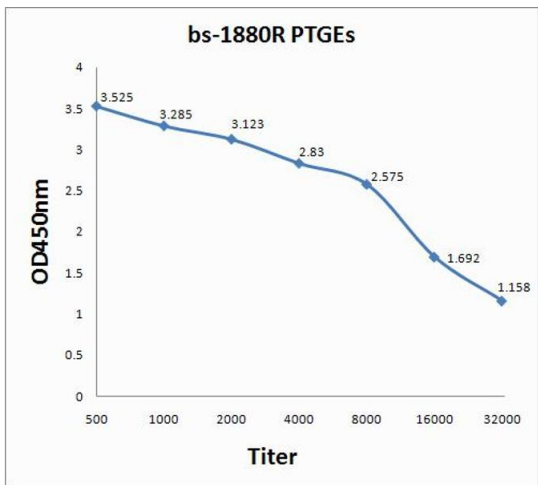
Storage Comment: Shipped at 4°C. Store at -20°C for one year. Avoid repeated freeze/thaw cycles.

Expiry Date: 12 months



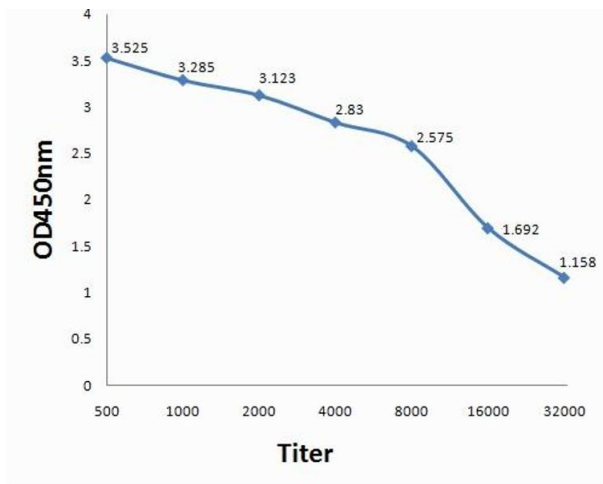
Immunohistochemistry

Image 1. Formalin-fixed and paraffin embedded human bladder carcinoma labeled with Rabbit Anti PTGEs Polyclonal Antibody, Unconjugated (ABIN735788) at 1:200 followed by conjugation to the secondary antibody and DAB staining



ELISA

Image 2. Antigen: 0.2 μg/100 μL Primary: Antiserum, 1:500, 1:1000, 1:2000, 1:4000, 1:8000, 1:16000, 1:32000; Secondary: HRP conjugated Goat-Anti-Rabbit IgG at 1: 5000; TMB staining; Read the data in MicroplateReader by 450



ELISA

Image 3. Antigen: 0.2ug/100ul, Primary: Antiserum, 1:500, 1:1000, 1:2000, 1:4000, 1:8000, 1:16000, 1:32000, Secondary: HRP conjugated Goat-Anti-Rabbit IgG at 1: 5000, TMB staining, Read the data in MicroplateReader by 450nm