

Datasheet for ABIN735803
anti-PTTG1 antibody (AA 101-202)[Go to Product page](#)

1 Image

Overview

Quantity:	100 µL
Target:	PTTG1
Binding Specificity:	AA 101-202
Reactivity:	Human, Mouse, Rat
Host:	Rabbit
Clonality:	Polyclonal
Conjugate:	This PTTG1 antibody is un-conjugated
Application:	Western Blotting (WB), ELISA, Immunohistochemistry (Paraffin-embedded Sections) (IHC (p)), Immunofluorescence (Cultured Cells) (IF (cc)), Immunofluorescence (Paraffin-embedded Sections) (IF (p)), Immunohistochemistry (Frozen Sections) (IHC (fro))

Product Details

Immunogen:	KLH conjugated synthetic peptide derived from human PTTG
Isotype:	IgG
Cross-Reactivity:	Human, Mouse, Rat
Predicted Reactivity:	Pig,Horse
Purification:	Purified by Protein A.

Target Details

Target:	PTTG1
---------	-------

Target Details

Alternative Name:	Securin/PTTG (PTTG1 Products)
Background:	<p>Synonyms: AW555095, C87862, Cut2, EAP 1, EAP1, ESP1 ASSOCIATED PROTEIN 1, Esp1-associated protein, hPTTG, MGC126883, MGC138276, Pds1, Pituitary tumor transforming 1, Pituitary tumor transforming protein 1, Pituitary tumor-transforming 1, isoform CRA_a, Pituitary tumor-transforming 1, isoform CRA_b, Pituitary tumor-transforming gene 1, Pituitary tumor-transforming gene 1 protein, PTTG 1, PTTG, PTTG1, PTTG1 protein, Pttg3, TUMOR TRANSFORMING 1, Tumor transforming protein 1, TUMOR-TRANSFORMING 1, TUTR 1, TUTR1.</p> <p>Background: Securin is an anaphase inhibitor and plays an important role in DNA damage and spindle check point pathways. It inhibits sister chromatid separation by binding and inhibiting Esp 1, a cystein protease that causes cleavage of the cohesin Scc 1 that binds the sister chromatids together. It is responsible for targeting of Esp 1 to the nucleus and its binding to the spindle. Degradation of Securin occurs shortly before anaphase, which liberates Esp 1 and is a pre-requisite for anaphase entry. It is targeted for degradation by ubiquitination mediated by cyclosome / anaphase promoting complex (APC) functioning as a ubiquitin ligase. In response to DNA damage Chk 1 phosphorylates Securin to stabilize it against the APC mediated destruction, hence preventing the entry of such a cell into anaphase. Securin is highly expressed in various human tumors, including pituitary, adrenal, kidney, liver, and ovarian tumors, and in cell lines derived from pituitary tumors, breast tumors, endometrial tumors, and ovarian tumors.</p>

Gene ID:	9232
----------	------

Application Details

Application Notes:	WB 1:300-5000 ELISA 1:500-1000 IHC-P 1:200-400 IHC-F 1:100-500 IF(IHC-P) 1:50-200 IF(IHC-F) 1:50-200 IF(ICC) 1:50-200
--------------------	---

Restrictions:	For Research Use only
---------------	-----------------------

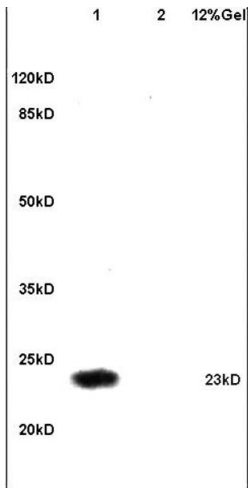
Handling

Format:	Liquid
---------	--------

Handling

Concentration:	1 µg/µL
Buffer:	0.01M TBS(pH 7.4) with 1 % BSA, 0.02 % Proclin300 and 50 % Glycerol.
Preservative:	ProClin
Precaution of Use:	This product contains ProClin: a POISONOUS AND HAZARDOUS SUBSTANCE, which should be handled by trained staff only.
Storage:	4 °C,-20 °C
Storage Comment:	Shipped at 4°C. Store at -20°C for one year. Avoid repeated freeze/thaw cycles.
Expiry Date:	12 months

Images



SDS-PAGE

Image 1. Lane 1: human colon carcinoma Lane 2: mouse brain lysates probed with Anti Securin/PTTG Polyclonal Antibody, Unconjugated (ABIN735803) at 1:200 in 4C. Followed by conjugation to secondary antibody at 1:3000 90min in 37C. Predicted band 22-28kD. Observed band size: 23kD