

Datasheet for ABIN735863
anti-Reprimo antibody (AA 41-109)

2 Images

[Go to Product page](#)

Overview

Quantity:	100 µL
Target:	Reprimo (RPRM)
Binding Specificity:	AA 41-109
Reactivity:	Rat, Human
Host:	Rabbit
Clonality:	Polyclonal
Conjugate:	This Reprimo antibody is un-conjugated
Application:	Immunofluorescence (Cultured Cells) (IF (cc)), Immunofluorescence (Paraffin-embedded Sections) (IF (p)), ELISA, Immunohistochemistry (Frozen Sections) (IHC (fro)), Immunohistochemistry (Paraffin-embedded Sections) (IHC (p))

Product Details

Immunogen:	KLH conjugated synthetic peptide derived from human Reprimo
Isotype:	IgG
Cross-Reactivity:	Human, Rat
Predicted Reactivity:	Mouse,Cow,Rabbit
Purification:	Purified by Protein A.

Target Details

Target:	Reprimo (RPRM)
---------	----------------

Target Details

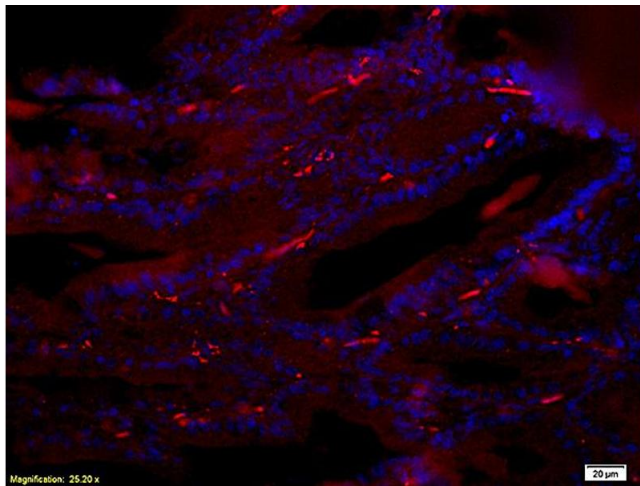
Alternative Name:	Reprimo (RPRM Products)
Background:	Synonyms: REPRIMO, Protein reprimo, RPRM Background: May be involved in the regulation of p53-dependent G2 arrest of the cell cycle. Seems to induce cell cycle arrest by inhibiting CDK1 activity and nuclear translocation of the CDC2 cyclin B1 complex (By similarity).
Gene ID:	56475
UniProt:	Q9NS64

Application Details

Application Notes:	ELISA 1:500-1000 IHC-P 1:200-400 IHC-F 1:100-500 IF(IHC-P) 1:50-200 IF(IHC-F) 1:50-200 IF(ICC) 1:50-200
Restrictions:	For Research Use only

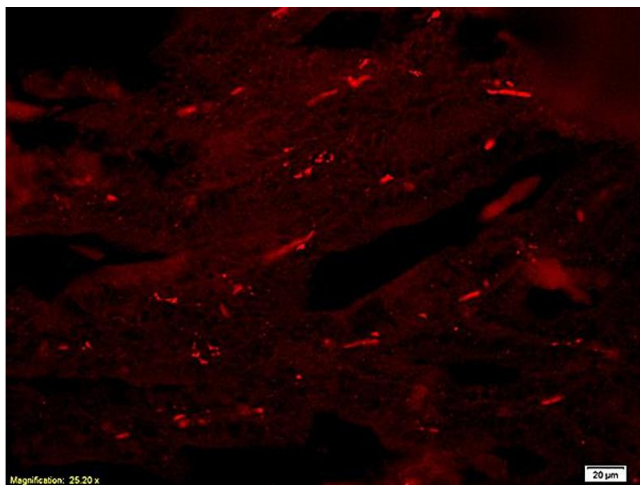
Handling

Format:	Liquid
Concentration:	1 µg/µL
Buffer:	0.01M TBS(pH 7.4) with 1 % BSA, 0.02 % Proclin300 and 50 % Glycerol.
Preservative:	ProClin
Precaution of Use:	This product contains ProClin: a POISONOUS AND HAZARDOUS SUBSTANCE, which should be handled by trained staff only.
Storage:	4 °C, -20 °C
Storage Comment:	Shipped at 4°C. Store at -20°C for one year. Avoid repeated freeze/thaw cycles.
Expiry Date:	12 months



Immunofluorescence

Image 1. Formalin-fixed and paraffin-embedded : rat breast tissue labeled with Rabbit Anti-Reprimo Polyclonal Antibody (ABIN735863), Unconjugated 1:200 followed by conjugation to the secondary PE antibody and DAPI staining



Immunofluorescence

Image 2. Formalin-fixed and paraffin-embedded : rat breast tissue labeled with Rabbit Anti-Reprimo Polyclonal Antibody (ABIN735863), Unconjugated 1:200 followed by conjugation to the secondary PE antibody