

Datasheet for ABIN7358666  
**anti-CLEC4C antibody (AA 45-213)**[Go to Product page](#)

## 2 Images

## Overview

Quantity:	50 µg
Target:	CLEC4C
Binding Specificity:	AA 45-213
Reactivity:	Human
Host:	Rabbit
Clonality:	Polyclonal
Conjugate:	This CLEC4C antibody is un-conjugated
Application:	Immunohistochemistry (IHC), ELISA

## Product Details

Immunogen:	Recombinant Human C-type lectin domain family 4 member C protein (45-213AA)
Isotype:	IgG
Cross-Reactivity:	Human
Purification:	>95%, Protein G purified

## Target Details

Target:	CLEC4C
Alternative Name:	CLEC4C ( <a href="#">CLEC4C Products</a> )
Background:	Background: Involved in antigen-capturing. Target ligand into antigen processing and peptide-loading compartments for presentation to T-cells. May mediate potent inhibition of induction of

## Target Details

IFN-alpha/beta expression in plasmacytoid dendritic cells. May act as a signaling receptor that activates protein-tyrosine kinases and mobilizes intracellular calcium. Does not seem to bind mannose.

Aliases: CLEC4C antibody, BDCA2 antibody, CLECSF11 antibody, CLECSF7 antibody, DLEC antibody, HECL antibody, UNQ9361/PRO34150C-type lectin domain family 4 member C antibody, Blood dendritic cell antigen 2 antibody, BDCA-2 antibody, C-type lectin superfamily member 7 antibody, Dendritic lectin antibody, CD antigen CD303 antibody

UniProt: [Q8WTT0](#)

## Application Details

Application Notes: Recommended dilution: IHC:1:20-1:200,

Restrictions: For Research Use only

## Handling

Format: Liquid

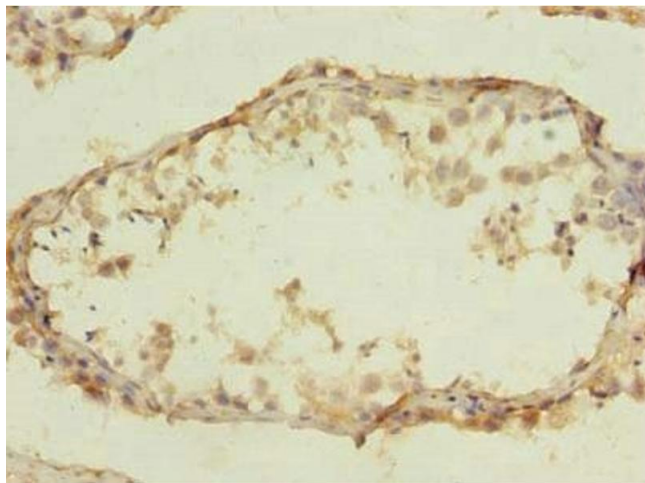
Buffer: Preservative: 0.03 % Proclin 300  
Constituents: 50 % Glycerol, 0.01M PBS, PH 7.4

Preservative: ProClin

Precaution of Use: This product contains ProClin: a POISONOUS AND HAZARDOUS SUBSTANCE which should be handled by trained staff only.

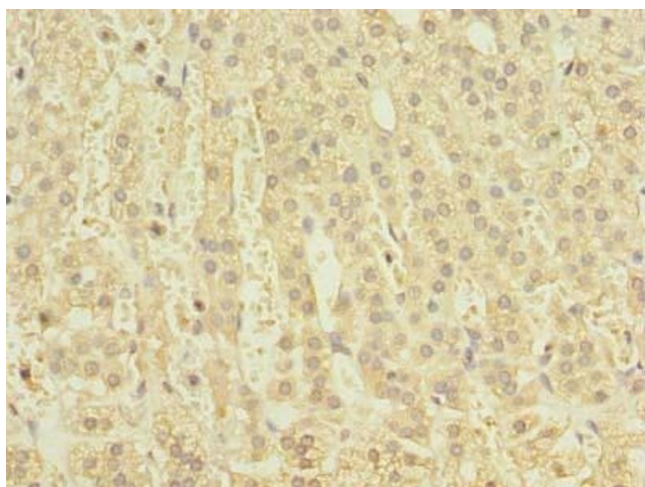
Storage: -20 °C,-80 °C

Storage Comment: Upon receipt, store at -20°C or -80°C. Avoid repeated freeze.



#### Immunohistochemistry

**Image 1.** Immunohistochemistry of paraffin-embedded human testis tissue using at dilution of 1:100



#### Immunohistochemistry

**Image 2.** Immunohistochemistry of paraffin-embedded human adrenal gland tissue using at dilution of 1:100