

Datasheet for ABIN736133  
**anti-STRA8 antibody (AA 201-300)**

## 2 Images

[Go to Product page](#)

## Overview

Quantity:	100 µL
Target:	STRA8
Binding Specificity:	AA 201-300
Reactivity:	Human, Mouse, Rat
Host:	Rabbit
Clonality:	Polyclonal
Conjugate:	This STRA8 antibody is un-conjugated
Application:	Western Blotting (WB), ELISA, Immunohistochemistry (Paraffin-embedded Sections) (IHC (p)), Immunofluorescence (Cultured Cells) (IF (cc)), Immunofluorescence (Paraffin-embedded Sections) (IF (p)), Immunohistochemistry (Frozen Sections) (IHC (fro))

## Product Details

Immunogen:	KLH conjugated synthetic peptide derived from human Stra8
Isotype:	IgG
Cross-Reactivity:	Human, Mouse, Rat
Purification:	Purified by Protein A.

## Target Details

Target:	STRA8
Alternative Name:	Stra8 ( <a href="#">STRA8 Products</a> )

## Target Details

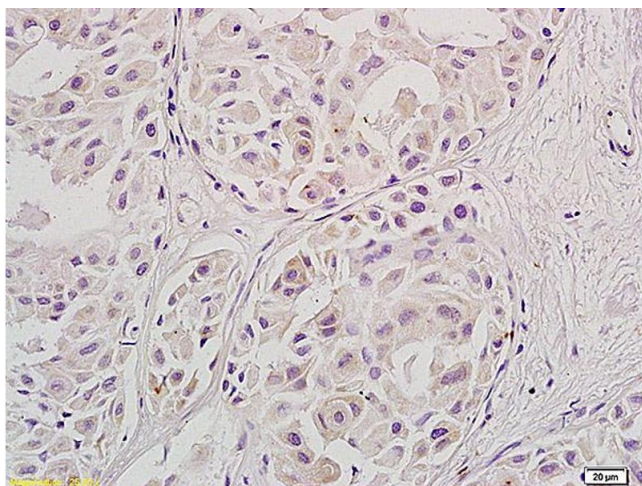
Background:	Synonyms: Stimulated by retinoic acid gene 8 protein homolog, STRA8 Background: Meiosis-inducer required for the transition into meiosis for both female and male germ cells. In female germ cells, required for premeiotic DNA replication and subsequent events in meiotic prophase (By similarity).
Gene ID:	346673
UniProt:	<a href="#">Q7Z7C7</a>

## Application Details

Application Notes:	WB 1:300-5000 ELISA 1:500-1000 IHC-P 1:200-400 IHC-F 1:100-500 IF(IHC-P) 1:50-200 IF(IHC-F) 1:50-200 IF(ICC) 1:50-200
Restrictions:	For Research Use only

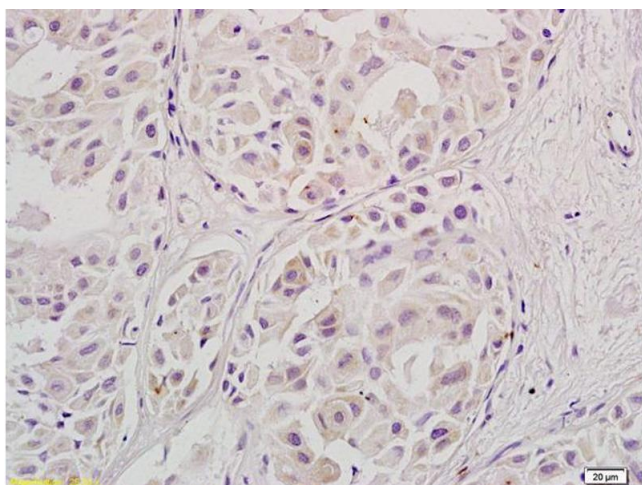
## Handling

Format:	Liquid
Concentration:	1 µg/µL
Buffer:	0.01M TBS( pH 7.4) with 1 % BSA, 0.02 % Proclin300 and 50 % Glycerol.
Preservative:	ProClin
Precaution of Use:	This product contains ProClin: a POISONOUS AND HAZARDOUS SUBSTANCE, which should be handled by trained staff only.
Storage:	4 °C,-20 °C
Storage Comment:	Shipped at 4°C. Store at -20°C for one year. Avoid repeated freeze/thaw cycles.
Expiry Date:	12 months



#### Immunohistochemistry

**Image 1.** Formalin-fixed and paraffin embedded human ovary carcinoma labeled with Anti-Stra8, unconjugated (ABIN736133) at 1:800, followed by incubation with conjugated secondary antibody and DAB staining.



#### Immunohistochemistry

**Image 2.** Formalin-fixed and paraffin embedded human ovary carcinoma labeled with Anti-Stra8, Unconjugated (ABIN736133) at 1:800, followed by conjugation to the secondary antibody and DAB staining.