

Datasheet for ABIN736386
anti-TLR1 antibody (PE-Cy7)[Go to Product page](#)

1 Image

Overview

Quantity:	100 µL
Target:	TLR1
Reactivity:	Human, Mouse, Rat, Cow, Dog
Host:	Rabbit
Clonality:	Polyclonal
Conjugate:	This TLR1 antibody is conjugated to PE-Cy7
Application:	Western Blotting (WB), Flow Cytometry (FACS)

Product Details

Immunogen:	KLH conjugated synthetic peptide derived from human TLR1
Isotype:	IgG
Cross-Reactivity:	Human, Mouse, Rat
Predicted Reactivity:	Dog,Cow,Horse
Purification:	Purified by Protein A.

Target Details

Target:	TLR1
Alternative Name:	TLR1 (TLR1 Products)
Background:	Synonyms: TIL, CD281, rsc786, TIL. LPRS5, Toll-like receptor 1, Toll/interleukin-1 receptor-like protein, TLR1, KIAA12

Target Details

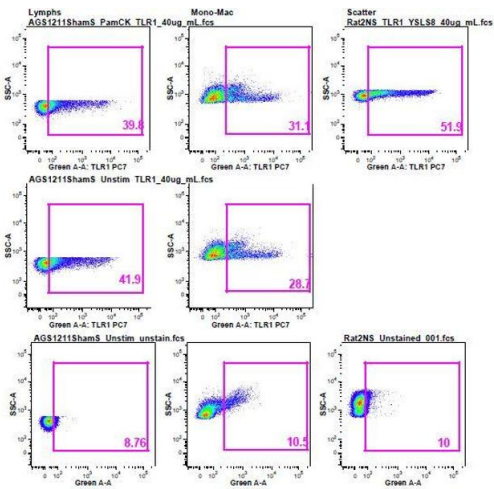
	Background: Participates in the innate immune response to microbial agents. Specifically recognizes diacylated and triacylated lipopeptides. Cooperates with TLR2 to mediate the innate immune response to bacterial lipoproteins or lipopeptides. Acts via MYD88 and TRAF6, leading to NF-kappa-B activation, cytokine secretion and the inflammatory response (By similarity).
Molecular Weight:	84 (hu,mo)/91 (rat)kDa
Gene ID:	7096
UniProt:	Q15399
Pathways:	TLR Signaling , Activation of Innate immune Response , Cellular Response to Molecule of Bacterial Origin , Toll-Like Receptors Cascades

Application Details

Application Notes:	FCM(1:100-500) Optimal working dilution should be determined by the investigator.
Restrictions:	For Research Use only

Handling

Format:	Liquid
Concentration:	1 µg/µL
Buffer:	Aqueous buffered solution containing 0.01M TBS (pH 7.4) with 1 % BSA, 0.03 % Proclin300 and 50 % Glycerol.
Preservative:	Sodium azide
Precaution of Use:	This product contains sodium azide: a POISONOUS AND HAZARDOUS SUBSTANCE which should be handled by trained staff only.
Storage:	-20 °C
Storage Comment:	Store at -20°C. Aliquot into multiple vials to avoid repeated freeze-thaw cycles.
Expiry Date:	12 months



Flow Cytometry

Image 1. Ab staining on AGS & Rat cells, Panel 2 - TLR1 PC7