

Datasheet for ABIN736656  
**anti-Inhibin alpha antibody (AA 301-366)**[Go to Product page](#)

3 Images

2 Publications

## Overview

Quantity:	100 µL
Target:	Inhibin alpha (INHA)
Binding Specificity:	AA 301-366
Reactivity:	Mouse, Rat, Pig
Host:	Rabbit
Clonality:	Polyclonal
Conjugate:	This Inhibin alpha antibody is un-conjugated
Application:	Western Blotting (WB), ELISA, Immunofluorescence (Cultured Cells) (IF (cc)), Immunofluorescence (Paraffin-embedded Sections) (IF (p)), Immunohistochemistry (Paraffin-embedded Sections) (IHC (p)), Immunohistochemistry (Frozen Sections) (IHC (fro))

## Product Details

Immunogen:	KLH conjugated synthetic peptide derived from mouse Inhibin Alpha
Isotype:	IgG
Cross-Reactivity:	Mouse, Pig, Rat
Predicted Reactivity:	Human
Purification:	Purified by Protein A.

## Target Details

Target:	Inhibin alpha (INHA)
---------	----------------------

## Target Details

Alternative Name:	Inhibin Alpha ( <a href="#">INHA Products</a> )
Background:	<p>Synonyms: AW55578, Inhibin alpha chain, Inha</p> <p>Background: Inhibins and activins inhibit and activate, respectively, the secretion of follitropin by the pituitary gland. Inhibins/activins are involved in regulating a number of diverse functions such as hypothalamic and pituitary hormone secretion, gonadal hormone secretion, germ cell development and maturation, erythroid differentiation, insulin secretion, nerve cell survival, embryonic axial development or bone growth, depending on their subunit composition. Inhibins appear to oppose the functions of activins. Inhibin deficient mice are viable but are acutely sensitive to development of gonadal sex-cord stromal tumors.</p>
Gene ID:	16322
UniProt:	<a href="#">Q04997</a>
Pathways:	<a href="#">Peptide Hormone Metabolism</a> , <a href="#">Hormone Activity</a> , <a href="#">Negative Regulation of Hormone Secretion</a>

## Application Details

Application Notes:	<p>WB 1:300-5000</p> <p>ELISA 1:500-1000</p> <p>IHC-P 1:200-400</p> <p>IHC-F 1:100-500</p> <p>IF(IHC-P) 1:50-200</p> <p>IF(IHC-F) 1:50-200</p> <p>IF(ICC) 1:50-200</p>
Restrictions:	For Research Use only

## Handling

Format:	Liquid
Concentration:	1 µg/µL
Buffer:	0.01M TBS( pH 7.4) with 1 % BSA, 0.02 % Proclin300 and 50 % Glycerol.
Preservative:	ProClin
Precaution of Use:	This product contains ProClin: a POISONOUS AND HAZARDOUS SUBSTANCE, which should be handled by trained staff only.
Storage:	4 °C, -20 °C

## Handling

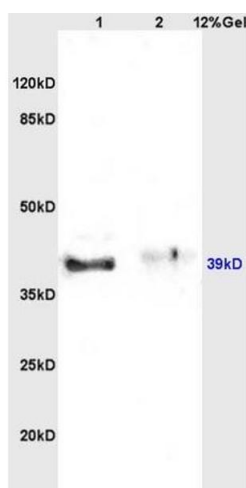
Storage Comment: Shipped at 4°C. Store at -20°C for one year. Avoid repeated freeze/thaw cycles.

Expiry Date: 12 months

## Publications

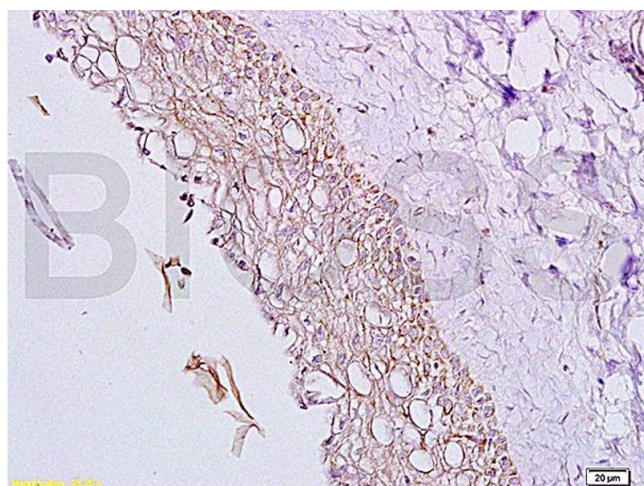
Product cited in: Wang, Li, Li, Ma, Chen, Zhao, Rao, Zhou: "Downregulation of the expression of inhibin  $\alpha$  subunit and betaglycan in porcine cystic follicles." in: **The Journal of veterinary medical science / the Japanese Society of Veterinary Science**, (2015) ([PubMed](#)).

## Images



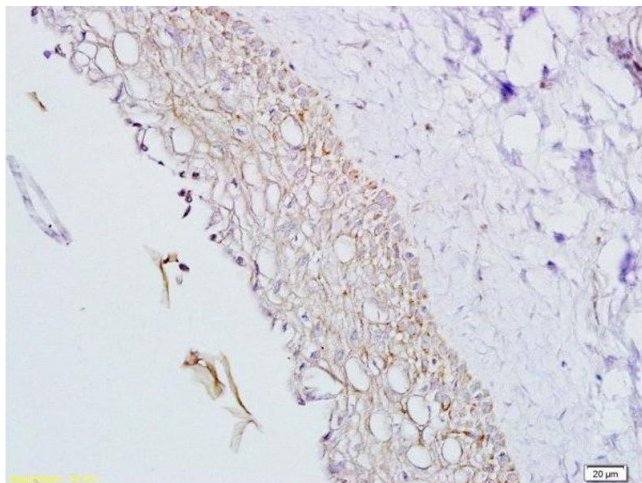
### SDS-PAGE

**Image 1.** Lane 1: rat brain lysates Lane 2: rat kidney lysates probed with Anti Inhibin Alpha Polyclonal Antibody, Unconjugated (ABIN736656) at 1:200 in 4 °C. Followed by conjugation to secondary antibody at 1:3000 90min in 37 °C. Predicted band 39kD. Observed band size: 39kD



### Immunohistochemistry

**Image 2.** Formalin-fixed and paraffin embedded rat ovary tissue labeled with Anti-Inhibin Alpha Polyclonal Antibody, Unconjugated (ABIN736656) at 1:200, followed by conjugation to the secondary antibody and DAB staining



#### Immunohistochemistry (Paraffin-embedded Sections)

**Image 3.** Formalin-fixed and paraffin embedded rat ovary tissue labeled with Anti-Inhibin Alpha Polyclonal Antibody, Unconjugated at 1:200, followed by conjugation to the secondary antibody and DAB staining