

Datasheet for ABIN736716
anti-L-Selectin antibody (AA 301-372)[Go to Product page](#)

7 Images

1 Publication

Overview

Quantity:	100 µL
Target:	L-Selectin (SELL)
Binding Specificity:	AA 301-372
Reactivity:	Mouse, Rat
Host:	Rabbit
Clonality:	Polyclonal
Conjugate:	This L-Selectin antibody is un-conjugated
Application:	Flow Cytometry (FACS), Western Blotting (WB), ELISA, Immunohistochemistry (Frozen Sections) (IHC (fro)), Immunohistochemistry (Paraffin-embedded Sections) (IHC (p)), Immunofluorescence (Paraffin-embedded Sections) (IF (p)), Immunofluorescence (Cultured Cells) (IF (cc))

Product Details

Immunogen:	KLH conjugated synthetic peptide derived from mouse CD62L
Isotype:	IgG
Cross-Reactivity:	Mouse, Rat
Predicted Reactivity:	Cow,Rabbit
Purification:	Purified by Protein A.

Target Details

Target:	L-Selectin (SELL)
---------	-------------------

Target Details

Alternative Name:	CD62L (SELL Products)
Background:	<p>Synonyms: L-selectin, CD62 antigen-like family member L, Leukocyte adhesion molecule 1, LAM-1, Leukocyte-endothelial cell adhesion molecule 1, LECAM1, Lymph node homing receptor, Lymphocyte antigen 22, Ly-22, Lymphocyte surface MEL-14 antigen, CD62L, Sell, Lnhr, Ly22</p> <p>Background: Cell surface adhesion protein. Mediates the adherence of lymphocytes to endothelial cells of high endothelial venules in peripheral lymph nodes. Promotes initial tethering and rolling of leukocytes in endothelia (By similarity).</p>
Gene ID:	20343
UniProt:	P18337

Application Details

Application Notes:	<p>WB 1:300-5000</p> <p>ELISA 1:500-1000</p> <p>FCM 1:20-100</p> <p>IHC-P 1:200-400</p> <p>IHC-F 1:100-500</p> <p>IF(IHC-P) 1:50-200</p> <p>IF(IHC-F) 1:50-200</p> <p>IF(ICC) 1:50-200</p>
Restrictions:	For Research Use only

Handling

Format:	Liquid
Concentration:	1 µg/µL
Buffer:	0.01M TBS(pH 7.4) with 1 % BSA, 0.02 % Proclin300 and 50 % Glycerol.
Preservative:	ProClin
Precaution of Use:	This product contains ProClin: a POISONOUS AND HAZARDOUS SUBSTANCE, which should be handled by trained staff only.
Storage:	4 °C,-20 °C
Storage Comment:	Shipped at 4°C. Store at -20°C for one year. Avoid repeated freeze/thaw cycles.
Expiry Date:	12 months

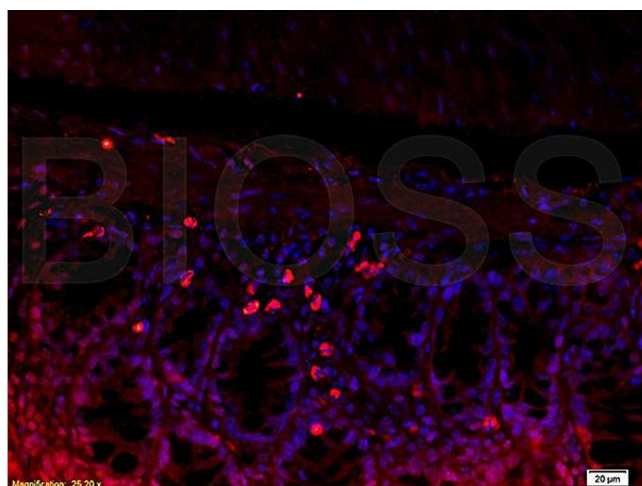
Product cited in: Vries, Wagenaar, Verbruggen, Molin, Post: "CXCL1 promotes arteriogenesis through enhanced monocyte recruitment into the peri-collateral space." in: **Angiogenesis**, (2015) ([PubMed](#)).

Images



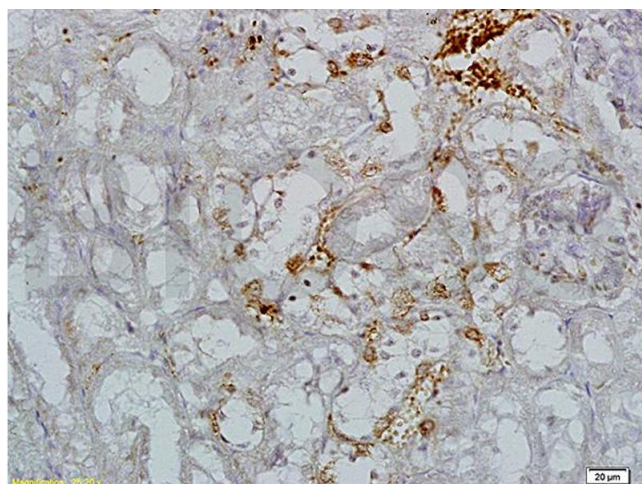
Immunofluorescence

Image 1. Formalin-fixed and paraffin embedded mouse kidney tissue labeled with Rabbit Anti-L-Selectin/CD62L Polyclonal Antibody (ABIN736716), Unconjugated 1:200 followed by conjugation to the secondary antibody and DAB staining



Immunofluorescence

Image 2. Formalin-fixed and paraffin embedded mouse kidney tissue labeled with Rabbit Anti-L-Selectin/CD62L Polyclonal Antibody (ABIN736716), Unconjugated 1:200 followed by conjugation to the secondary antibody and DAB staining



Immunohistochemistry

Image 3. Formalin-fixed and paraffin embedded mouse kidney tissue labeled with (ABIN736716) Rabbit Anti-L-Selectin CD62L Polyclonal Antibody, unconjugated 1: 200 followed by incubation with conjugated secondary antibody and DAB staining

Please check the [product details page](#) for more images. Overall 7 images are available for ABIN736716.