

Datasheet for ABIN736926

anti-Cx40/GJA5 antibody (AA 301-358)**3** Images**1** Publication[Go to Product page](#)

Overview

Quantity:	100 µL
Target:	Cx40/GJA5 (GJA5)
Binding Specificity:	AA 301-358
Reactivity:	Human, Rat, Mouse, Dog
Host:	Rabbit
Clonality:	Polyclonal
Conjugate:	This Cx40/GJA5 antibody is un-conjugated
Application:	Western Blotting (WB), ELISA, Flow Cytometry (FACS), Immunohistochemistry (Paraffin-embedded Sections) (IHC (p)), Immunofluorescence (Cultured Cells) (IF (cc)), Immunofluorescence (Paraffin-embedded Sections) (IF (p)), Immunohistochemistry (Frozen Sections) (IHC (fro))

Product Details

Immunogen:	KLH conjugated synthetic peptide derived from human Connexin-40
Isotype:	IgG
Cross-Reactivity:	Dog, Human, Mouse, Rat
Predicted Reactivity:	Cow, Sheep, Pig, Rabbit
Purification:	Purified by Protein A.

Target Details

Target:	Cx40/GJA5 (GJA5)
---------	------------------

Target Details

Alternative Name:	Connexin-40 (GJA5 Products)
Background:	Synonyms: CX40, Gap junction alpha-5 protein, Connexin-40, GJA5 Background: One gap junction consists of a cluster of closely packed pairs of transmembrane channels, the connexons, through which materials of low MW diffuse from one cell to a neighboring cell.
Gene ID:	2702
UniProt:	P36382
Pathways:	Cell-Cell Junction Organization

Application Details

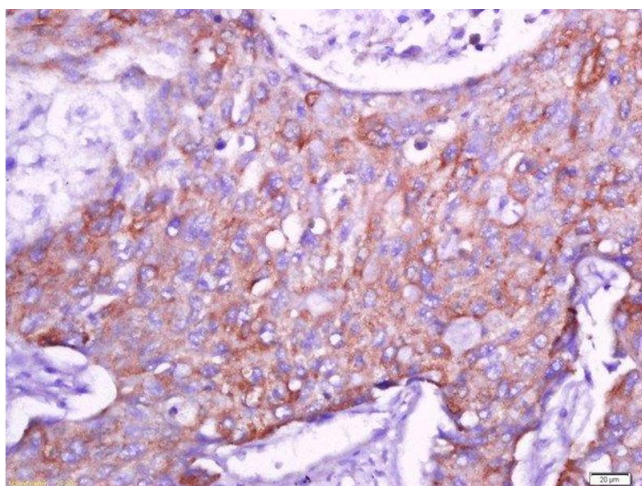
Application Notes:	WB 1:300-5000 ELISA 1:500-1000 FCM 1:20-100 IHC-P 1:200-400 IHC-F 1:100-500 IF(IHC-P) 1:50-200 IF(IHC-F) 1:50-200 IF(ICC) 1:50-200
Restrictions:	For Research Use only

Handling

Format:	Liquid
Concentration:	1 µg/µL
Buffer:	0.01M TBS(pH 7.4) with 1 % BSA, 0.02 % Proclin300 and 50 % Glycerol.
Preservative:	ProClin
Precaution of Use:	This product contains ProClin: a POISONOUS AND HAZARDOUS SUBSTANCE, which should be handled by trained staff only.
Storage:	4 °C, -20 °C
Storage Comment:	Shipped at 4°C. Store at -20°C for one year. Avoid repeated freeze/thaw cycles.
Expiry Date:	12 months

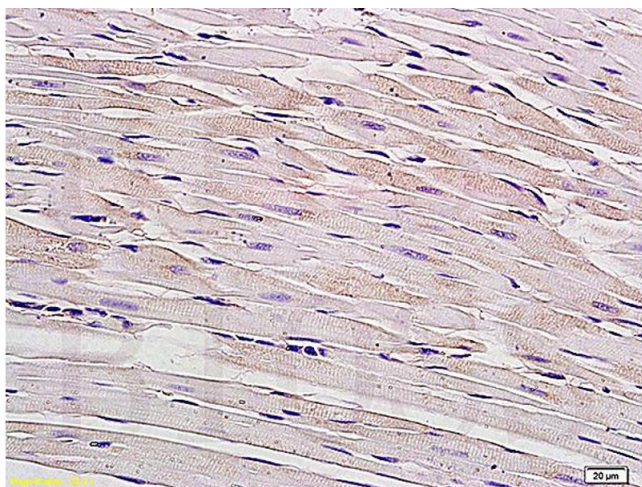
Product cited in: Zhao, Xu, Yun, Zhao, Li, Gong, Yuan, Yan, Zhang, Ding, Wang, Zhang, Dong, Xiu, Yang, Liu, Xue, Li : "Chronic obstructive sleep apnea causes atrial remodeling in canines: mechanisms and implications." in: **Basic research in cardiology**, Vol. 109, Issue 5, pp. 427, (2014) ([PubMed](#)).

Images



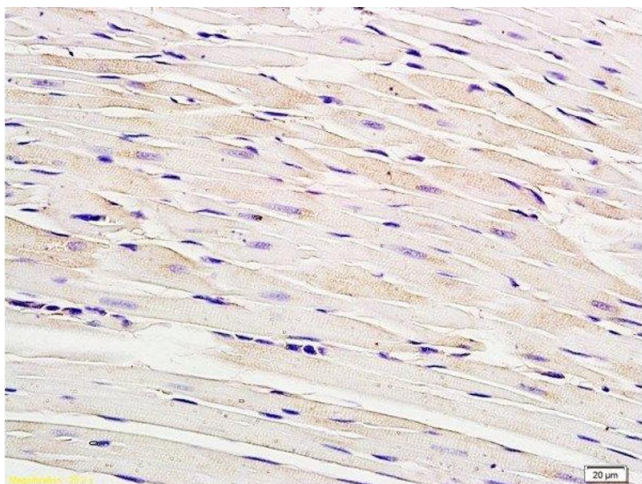
Immunohistochemistry (Paraffin-embedded Sections)

Image 1. Paraformaldehyde-fixed, paraffin embedded human lung carcinoma tissue, Antigen retrieval by boiling in sodium citrate buffer(pH6) for 15min, Block endogenous peroxidase by 3% hydrogen peroxide for 30 minutes, Blocking buffer (normal goat serum) at 37°C for 20min, Antibody incubation with Rabbit Anti-Connexin 40 Polyclonal Antibody, Unconjugated at 1:500 overnight at 4°C, followed by a conjugated secondary and DAB staining



Immunohistochemistry

Image 2. Formalin-fixed and paraffin embedded rat myocardium tissue labeled with Anti-Connexin-40 Polyclonal Antibody, Unconjugated (ABIN736926) at 1:200, followed by conjugation to the secondary antibody and DAB staining



Immunohistochemistry (Paraffin-embedded Sections)

Image 3. Formalin-fixed and paraffin embedded rat myocardium tissue labeled with Anti-Connexin-40 Polyclonal Antibody, Unconjugated at 1:200, followed by conjugation to the secondary antibody and DAB staining