

Datasheet for ABIN737046
anti-LIF antibody (AA 101-202)**2** Images**1** Publication[Go to Product page](#)

Overview

Quantity:	100 µL
Target:	LIF
Binding Specificity:	AA 101-202
Reactivity:	Human, Mouse
Host:	Rabbit
Clonality:	Polyclonal
Conjugate:	This LIF antibody is un-conjugated
Application:	Western Blotting (WB), ELISA, Immunohistochemistry (Paraffin-embedded Sections) (IHC (p)), Immunofluorescence (Cultured Cells) (IF (cc)), Immunofluorescence (Paraffin-embedded Sections) (IF (p)), Immunohistochemistry (Frozen Sections) (IHC (fro))

Product Details

Immunogen:	KLH conjugated synthetic peptide derived from human LIF
Isotype:	IgG
Cross-Reactivity:	Human, Mouse
Predicted Reactivity:	Rat,Dog,Cow,Pig,Rabbit
Purification:	Purified by Protein A.

Target Details

Target:	LIF
---------	-----

Target Details

Alternative Name:	LIF (LIF Products)
Background:	<p>Synonyms: CDF, DIA, HILDA, MLPLI, Leukemia inhibitory factor, LIF, Differentiation-stimulating factor, D factor, Melanoma-derived LPL inhibitor</p> <p>Background: LIF has the capacity to induce terminal differentiation in leukemic cells. Its activities include the induction of hematopoietic differentiation in normal and myeloid leukemia cells, the induction of neuronal cell differentiation, and the stimulation of acute-phase protein synthesis in hepatocytes.</p>
Gene ID:	3976
UniProt:	P15018
Pathways:	JAK-STAT Signaling , Positive Regulation of Peptide Hormone Secretion , Negative Regulation of Hormone Secretion , Stem Cell Maintenance , Growth Factor Binding

Application Details

Application Notes:	WB 1:300-5000 ELISA 1:500-1000 IHC-P 1:200-400 IHC-F 1:100-500 IF(IHC-P) 1:50-200 IF(IHC-F) 1:50-200 IF(ICC) 1:50-200
Restrictions:	For Research Use only

Handling

Format:	Liquid
Concentration:	1 µg/µL
Buffer:	0.01M TBS(pH 7.4) with 1 % BSA, 0.02 % Proclin300 and 50 % Glycerol.
Preservative:	ProClin
Precaution of Use:	This product contains ProClin: a POISONOUS AND HAZARDOUS SUBSTANCE, which should be handled by trained staff only.
Storage:	4 °C,-20 °C
Storage Comment:	Shipped at 4°C. Store at -20°C for one year. Avoid repeated freeze/thaw cycles.

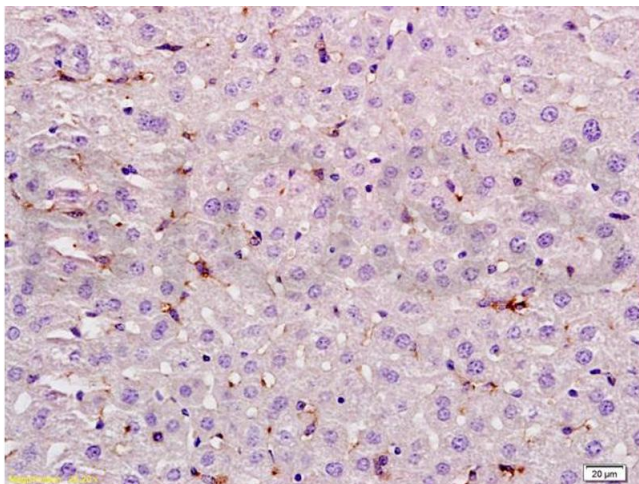
Handling

Expiry Date: 12 months

Publications

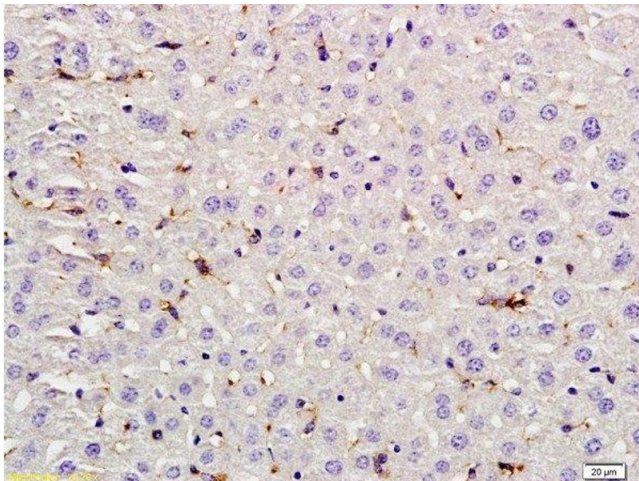
Product cited in: Liang, Zhou, Jiang, Zhang, Wang, Wang: "Expression of LIF and LIFR in periodontal tissue during orthodontic tooth movement." in: **The Angle orthodontist**, Vol. 81, Issue 4, pp. 600-8, (2011) ([PubMed](#)).

Images



Immunohistochemistry

Image 1. Formalin-fixed and paraffin embedded rat liver labeled with Rabbit Anti LIF Polyclonal Antibody, Unconjugated (ABIN737046) at 1:200 followed by conjugation to the secondary antibody and DAB staining



Immunohistochemistry (Paraffin-embedded Sections)

Image 2. Formalin-fixed and paraffin embedded rat liver labeled with Rabbit Anti LIF Polyclonal Antibody, Unconjugated at 1:200 followed by conjugation to the secondary antibody and DAB staining