

Datasheet for ABIN737061

anti-Cytokeratin 5 antibody (AA 331-430)**3** Images[Go to Product page](#)

Overview

Quantity:	100 µL
Target:	Cytokeratin 5 (KRT5)
Binding Specificity:	AA 331-430
Reactivity:	Human, Mouse, Rat
Host:	Rabbit
Clonality:	Polyclonal
Conjugate:	This Cytokeratin 5 antibody is un-conjugated
Application:	Western Blotting (WB), ELISA, Flow Cytometry (FACS), Immunohistochemistry (Paraffin-embedded Sections) (IHC (p)), Immunofluorescence (Cultured Cells) (IF (cc)), Immunofluorescence (Paraffin-embedded Sections) (IF (p)), Immunohistochemistry (Frozen Sections) (IHC (fro))

Product Details

Immunogen:	KLH conjugated synthetic peptide derived from human CK5
Isotype:	IgG
Cross-Reactivity:	Human, Mouse, Rat
Predicted Reactivity:	Dog,Cow,Pig,Horse,Rabbit
Purification:	Purified by Protein A.

Target Details

Target:	Cytokeratin 5 (KRT5)
---------	----------------------

Target Details

Alternative Name:	Cytokeratin 5 (KRT5 Products)
Background:	<p>Synonyms: Cytokeratin 5, Keratin, type II cytoskeletal 5, CK-5, CK 5, CK5, Keratin-5, K5, 58 kDa cytokeratin, KRT5, DDD, EBS 2, EBS2, K5, Keratin 5 epidermolysis bullosa simplex Dowling-Meara/Kobner/Weber-Cockayne types, Keratin 5, Keratin Type II Cytoskeletal 5, Keratin5, KRT 5, KRT 5A, KRT5, Cytokeratin-5, Cytokeratin5, DDD, epidermolysis bullosa simplex 2 Dowling-Meara/Kobner/Weber-Cockayne types, K2C5_HUMAN, Keratin 5, Keratin, Keratin Type II Cytoskeletal 5, Keratin5, KRT5A, type II cytoskeletal 5, Type-II keratin Kb5.</p> <p>Background: Cytokeratins (CK) are intermediate filaments of epithelial cells, both in keratinising tissue (ie., skin) and non keratinising cells (ie., mesothelial cells). Although not a traditional marker for endothelial cells, cytokeratins have also been found in some microvascular endothelial cells. At least 20 different cytokeratins (CK) in the molecular range of 40 to 70 kDa and isoelectric points of 5 to 8.5 can be identified using two dimensional gel electrophoresis. Biochemically, most members of the CK family fall into one of two classes, type I (acidic polypeptides) and type II (basic polypeptides). At least one member of the acidic family and one member of the basic family is expressed in all epithelial cells. Defects in KRT5 are a cause of epidermolysis bullosa simplex.</p>
Molecular Weight:	64kDa
Gene ID:	3852

Application Details

Application Notes:	WB 1:300-5000 ELISA 1:500-1000 FCM 1:20-100 IHC-P 1:200-400 IHC-F 1:100-500 IF(IHC-P) 1:50-200 IF(IHC-F) 1:50-200 IF(ICC) 1:50-200
Restrictions:	For Research Use only

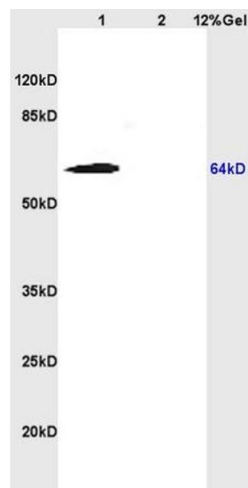
Handling

Format:	Liquid
Concentration:	1 µg/µL

Handling

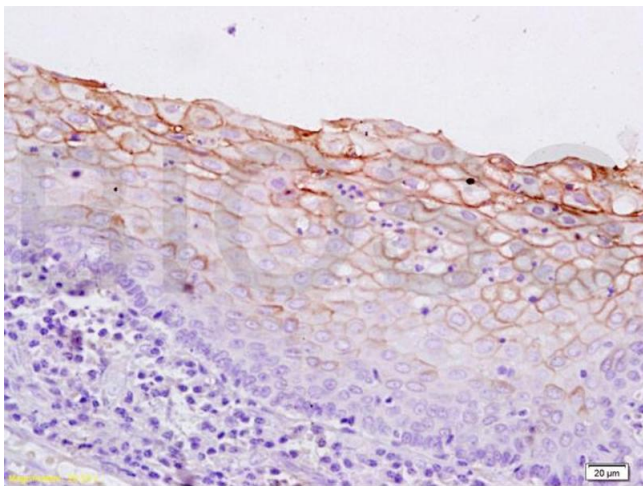
Buffer:	0.01M TBS(pH 7.4) with 1 % BSA, 0.02 % Proclin300 and 50 % Glycerol.
Preservative:	ProClin
Precaution of Use:	This product contains ProClin: a POISONOUS AND HAZARDOUS SUBSTANCE, which should be handled by trained staff only.
Storage:	4 °C,-20 °C
Storage Comment:	Shipped at 4°C. Store at -20°C for one year. Avoid repeated freeze/thaw cycles.
Expiry Date:	12 months

Images



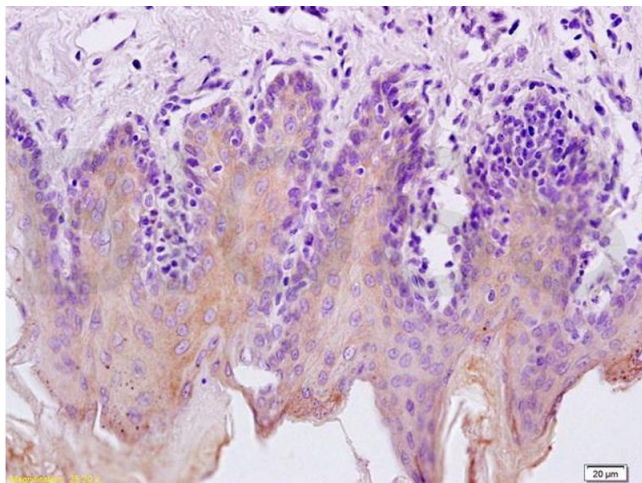
SDS-PAGE

Image 1. L1 rat heart lysates L2 rat heart lysates probed with Anti Cytokeratin 5/CK5 Polyclonal Antibody, Unconjugated (ABIN737061) at 1:200 overnight at 4 °C. Followed by conjugation to secondary antibody at 1:3000 for 90 min at 37 °C. Predicted band 64kD. Observed band size:64kD.



Immunohistochemistry

Image 2. Formalin-fixed and paraffin embedded human breast carcinoma labeled with Rabbit Anti Cytokeratin 5/CK5 Polyclonal Antibody, Unconjugated (ABIN737061) at 1:200 followed by conjugation to the secondary antibody and DAB staining



Immunohistochemistry

Image 3. Formalin-fixed and paraffin embedded rat tongue labeled with Rabbit Anti Cytokeratin 5/CK5 Polyclonal Antibody, Unconjugated (ABIN737061) at 1:200 followed by conjugation to the secondary antibody and DAB staining