

Datasheet for ABIN7372520  
**anti-ABCG2 antibody (AA 296-371)**[Go to Product page](#)

## 1 Image

## Overview

Quantity:	50 µg
Target:	ABCG2
Binding Specificity:	AA 296-371
Reactivity:	Human
Host:	Rabbit
Clonality:	Polyclonal
Conjugate:	This ABCG2 antibody is un-conjugated
Application:	ELISA, Immunofluorescence (IF)

## Product Details

Immunogen:	Recombinant Human ATP-binding cassette sub-family G member 2 protein (296-371AA)
Isotype:	IgG
Cross-Reactivity:	Human
Purification:	>95%, Protein G purified

## Target Details

Target:	ABCG2
Alternative Name:	ABCG2 ( <a href="#">ABCG2 Products</a> )
Background:	Background: High-capacity urate exporter functioning in both renal and extrarenal urate excretion. Plays a role in porphyrin homeostasis as it is able to mediate the export of

## Target Details

protoporphyrin IX (PPIX) both from mitochondria to cytosol and from cytosol to extracellular space, and cellular export of heme, and heme. Xenobiotic transporter that may play an important role in the exclusion of xenobiotics from the brain. Appears to play a major role in the multidrug resistance phenotype of several cancer cell lines. Implicated in the efflux of numerous drugs and xenobiotics: mitoxantrone, the photosensitizer pheophorbide, camptothecin, methotrexate, azidothymidine (AZT), and the anthracyclines daunorubicin and doxorubicin.

Aliases: ABC transporter antibody, ABC15 antibody, ABCG 2 antibody, ABCG2 antibody, ABCG2\_HUMAN antibody, ABCP antibody, ATP binding cassette sub family G (WHITE) member 2 antibody, ATP binding cassette transporter G2 antibody, ATP-binding cassette sub-family G member 2 antibody, BCRP antibody, BCRP1 antibody, BMDP antibody, Breast cancer resistance protein antibody, CD338 antibody, CDw338 antibody, CDw338 antigen antibody, EST157481 antibody, GOUT1 antibody, MGC102821 antibody, Mitoxantrone resistance associated protein antibody, Mitoxantrone resistance-associated protein antibody, MRX antibody, Multi drug resistance efflux transport ATP binding cassette sub family G (WHITE) member 2 antibody, MXR antibody, MXR1 antibody, Placenta specific ATP binding cassette transporter antibody, Placenta specific MDR protein antibody, Placenta-specific ATP-binding cassette transporter antibody, UAQTL1 antibody

UniProt: [Q9UNQ0](#)

Pathways: [Transition Metal Ion Homeostasis](#)

## Application Details

Application Notes: Recommended dilution: IF:1:50-1:200,

Restrictions: For Research Use only

## Handling

Format: Liquid

Buffer: Preservative: 0.03 % Proclin 300  
Constituents: 50 % Glycerol, 0.01M PBS, pH 7.4

Preservative: ProClin

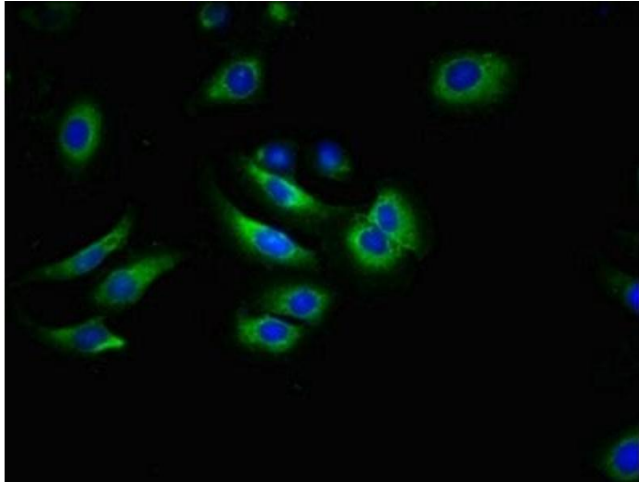
Precaution of Use: This product contains ProClin: a POISONOUS AND HAZARDOUS SUBSTANCE which should be handled by trained staff only.

## Handling

Storage: -20 °C, -80 °C

Storage Comment: Upon receipt, store at -20°C or -80°C. Avoid repeated freeze.

## Images



### Immunofluorescence

**Image 1.** Immunofluorescent analysis of A549 cells using at dilution of 1:100 and Alexa Fluor 488-conjugated AffiniPure Goat Anti-Rabbit IgG(H+L)