



[Go to Product page](#)

Datasheet for ABIN7372688

anti-GAB1 antibody (AA 119-329)

3 Images

Overview

Quantity:	50 µg
Target:	GAB1
Binding Specificity:	AA 119-329
Reactivity:	Human
Host:	Rabbit
Clonality:	Polyclonal
Conjugate:	This GAB1 antibody is un-conjugated
Application:	ELISA, Immunohistochemistry (IHC), Immunofluorescence (IF)

Product Details

Immunogen:	Recombinant Human GRB2-associated-binding protein 1 protein (119-329AA)
Isotype:	IgG
Cross-Reactivity:	Human
Purification:	>95%, Protein G purified

Target Details

Target:	GAB1
Alternative Name:	GAB1 (GAB1 Products)
Background:	Background: Adapter protein that plays a role in intracellular signaling cascades triggered by activated receptor-type kinases. Plays a role in FGFR1 signaling. Probably involved in signaling

Target Details

by the epidermal growth factor receptor (EGFR) and the insulin receptor (INSR).

Aliases: Gab 1 antibody, GAB1 antibody, GAB1_HUMAN antibody, GRB 2 associated binder 1 antibody, GRB 2 associated binding protein 1 antibody, GRB2 associated binding protein 1 isoform a antibody, GRB2 associated binding protein 1 isoform b antibody, GRB2-associated binder 1 antibody, GRB2-associated-binding protein 1 antibody, Growth factor receptor bound protein 2-associated protein 1 antibody

UniProt: [Q13480](#)

Pathways: [RTK Signaling](#), [Signaling Events mediated by VEGFR1 and VEGFR2](#), [Platelet-derived growth Factor Receptor Signaling](#), [Signaling of Hepatocyte Growth Factor Receptor](#), [VEGFR1 Specific Signals](#)

Application Details

Application Notes: Recommended dilution: IHC:1:20-1:200, IF:1:50-1:200,

Restrictions: For Research Use only

Handling

Format: Liquid

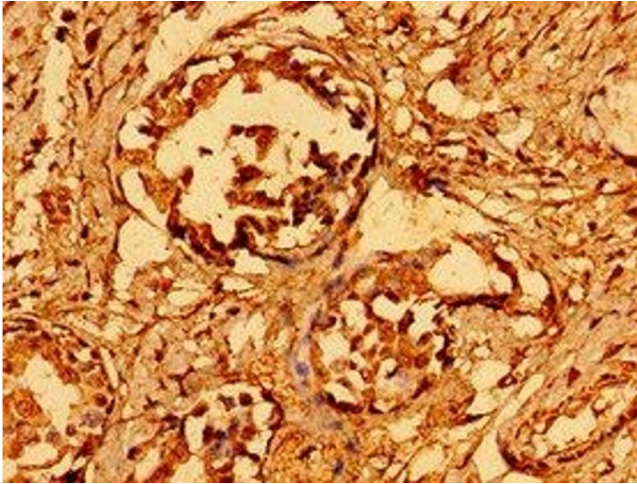
Buffer: Preservative: 0.03 % Proclin 300
Constituents: 50 % Glycerol, 0.01M PBS, pH 7.4

Preservative: ProClin

Precaution of Use: This product contains ProClin: a POISONOUS AND HAZARDOUS SUBSTANCE which should be handled by trained staff only.

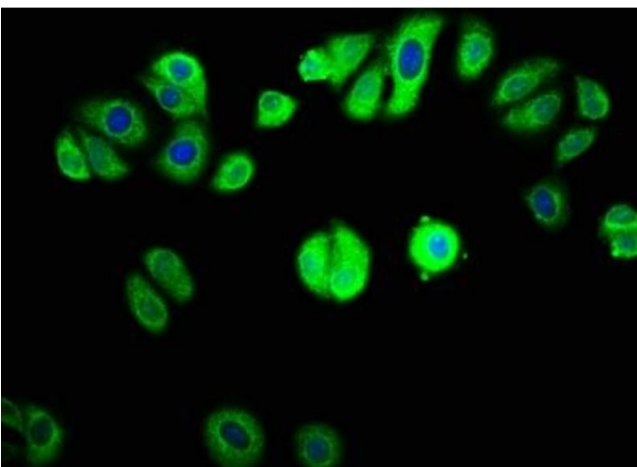
Storage: -20 °C,-80 °C

Storage Comment: Upon receipt, store at -20°C or -80°C. Avoid repeated freeze.



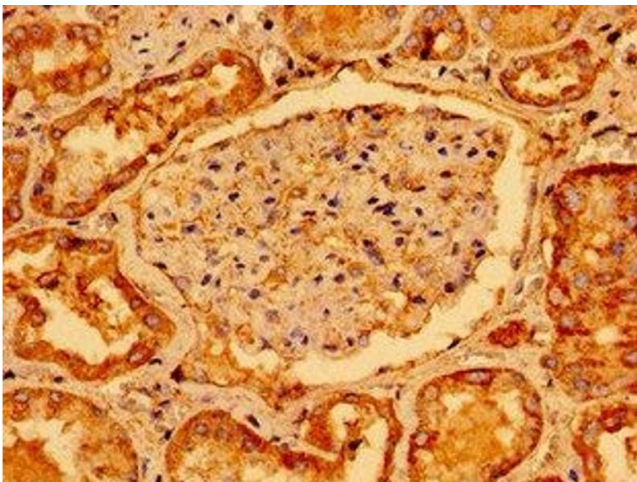
Immunohistochemistry

Image 1. Immunohistochemistry of paraffin-embedded human breast cancer using at dilution of 1:100



Immunofluorescence

Image 2. Immunofluorescence staining of HepG2 cells with at 1:133, counter-stained with DAPI. The cells were fixed in 4% formaldehyde, permeabilized using 0.2% Triton X-100 and blocked in 10% normal Goat Serum. The cells were then incubated with the antibody overnight at 4°C. The secondary antibody was Alexa Fluor 488-conjugated AffiniPure Goat Anti-Rabbit IgG(H+L).



Immunohistochemistry

Image 3. Immunohistochemistry of paraffin-embedded human kidney tissue using at dilution of 1:100