

Datasheet for ABIN737301
anti-EGR1 antibody (AA 401-453)[Go to Product page](#)

3 Images

Overview

Quantity:	100 µL
Target:	EGR1
Binding Specificity:	AA 401-453
Reactivity:	Human, Mouse, Rat
Host:	Rabbit
Clonality:	Polyclonal
Conjugate:	This EGR1 antibody is un-conjugated
Application:	Western Blotting (WB), ELISA, Flow Cytometry (FACS), Immunohistochemistry (Paraffin-embedded Sections) (IHC (p)), Immunofluorescence (Cultured Cells) (IF (cc)), Immunofluorescence (Paraffin-embedded Sections) (IF (p)), Immunohistochemistry (Frozen Sections) (IHC (fro))

Product Details

Immunogen:	KLH conjugated synthetic peptide derived from human Egr-1
Isotype:	IgG
Cross-Reactivity:	Human, Mouse, Rat
Purification:	Purified by Protein A.

Target Details

Target:	EGR1
Alternative Name:	Egr1 (EGR1 Products)

Target Details

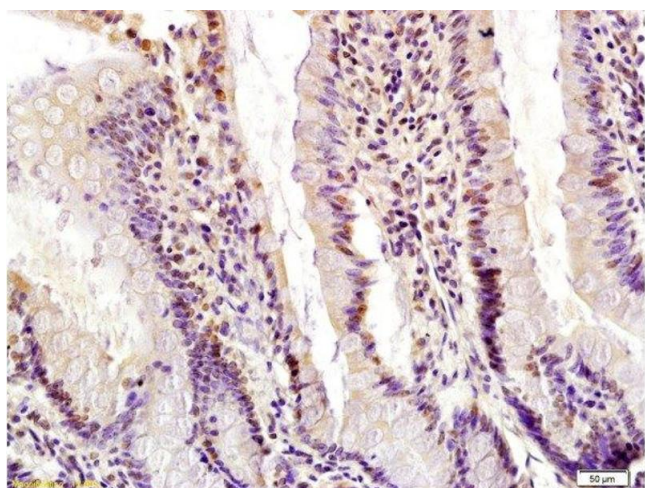
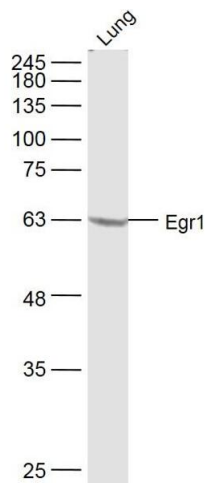
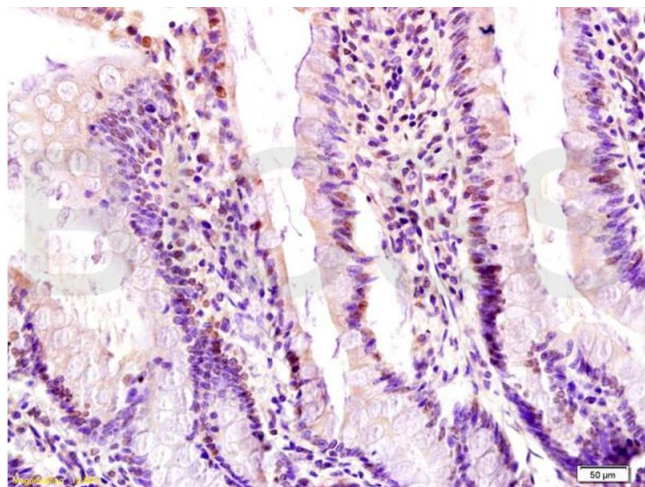
Background:	Synonyms: TIS8, AT225, G0S30, NGFI-A, ZNF225, KROX-24, ZIF-268, Early growth response protein 1, EGR-1, Nerve growth factor-induced protein A, Transcription factor ETR103, Transcription factor Zif268, Zinc finger protein 225, Zinc finger protein Krox-24, EGR1, KROX24 Background: Transcriptional regulator. Recognizes and binds to the DNA sequence 5'-CGCCCCCGC-3'(EGR-site). Activates the transcription of target genes whose products are required for mitogenesis and differentiation.
Gene ID:	1958
UniProt:	P18146
Pathways:	Regulation of Carbohydrate Metabolic Process , Regulation of long-term Neuronal Synaptic Plasticity

Application Details

Application Notes:	WB 1:300-5000 ELISA 1:500-1000 FCM 1:20-100 IHC-P 1:200-400 IHC-F 1:100-500 IF(IHC-P) 1:50-200 IF(IHC-F) 1:50-200 IF(ICC) 1:50-200
Restrictions:	For Research Use only

Handling

Format:	Liquid
Concentration:	1 µg/µL
Buffer:	0.01M TBS(pH 7.4) with 1 % BSA, 0.02 % Proclin300 and 50 % Glycerol.
Preservative:	ProClin
Precaution of Use:	This product contains ProClin: a POISONOUS AND HAZARDOUS SUBSTANCE, which should be handled by trained staff only.
Storage:	4 °C,-20 °C
Storage Comment:	Shipped at 4°C. Store at -20°C for one year. Avoid repeated freeze/thaw cycles.



Immunohistochemistry

Image 1. Formalin-fixed and paraffin embedded rat small intestine labeled with Anti-Egr1 Polyclonal Antibody, Unconjugated (ABIN737301) at 1:200 followed by conjugation to the secondary antibody and DAB staining.

Western Blotting

Image 2. Mouse Lung lysates probed with Egr1 Polyclonal Antibody, Unconjugated at 1:500 dilution and 4°C overnight incubation. Followed by conjugated secondary antibody incubation at 1:10000 for 60 min at 37°C.

Immunohistochemistry (Paraffin-embedded Sections)

Image 3. Formalin-fixed and paraffin embedded rat small intestine labeled with Anti-Egr1 Polyclonal Antibody, Unconjugated at 1:200 followed by conjugation to the secondary antibody and DAB staining.