

Datasheet for ABIN7373744  
**anti-LRRK2 antibody (AA 2029-2275)**[Go to Product page](#)

## 2 Images

## Overview

|                      |  |
|----------------------|--|
| Quantity:            | 50 µg  |
| Target:              | LRRK2  |
| Binding Specificity: | AA 2029-2275   |
| Reactivity:          | Human  |
| Host:                | Rabbit   |
| Clonality:           | Polyclonal   |
| Conjugate:           | This LRRK2 antibody is un-conjugated                       |
| Application:         | ELISA, Immunohistochemistry (IHC), Immunofluorescence (IF) |

## Product Details

|                   |   |
|-------------------|---|
| Immunogen:        | Recombinant Human Leucine-rich repeat serine/threonine-protein kinase 2 protein (2029-2275AA) |
| Isotype:          | IgG   |
| Cross-Reactivity: | Human   |
| Purification:     | >95%, Protein G purified  |

## Target Details

|                   |  |
|-------------------|--|
| Target:           | LRRK2  |
| Alternative Name: | LRRK2 ( <a href="#">LRRK2 Products</a> )   |
| Background:       | Background: Positively regulates autophagy through a calcium-dependent activation of the |

## Target Details

CaMKK/AMPK signaling pathway. The process involves activation of nicotinic acid adenine dinucleotide phosphate (NAADP) receptors, increase in lysosomal pH, and calcium release from lysosomes. Together with RAB29, plays a role in the retrograde trafficking pathway for recycling proteins, such as mannose 6 phosphate receptor (M6PR), between lysosomes and the Golgi apparatus in a retromer-dependent manner. Regulates neuronal process morphology in the intact central nervous system (CNS). Plays a role in synaptic vesicle trafficking. Phosphorylates PRDX3. Has GTPase activity. May play a role in the phosphorylation of proteins central to Parkinson disease.

Aliases: augmented in rheumatoid arthritis 17 antibody, AURA17 antibody, Dardarin antibody, Leucine rich repeat kinase 2 antibody, leucine rich repeat serine threonine protein kinase 2 antibody, Leucine-rich repeat serine/threonine-protein kinase 2 antibody, LRRK 2 antibody, LRRK2 antibody, LRRK2\_HUMAN antibody, PARK 8 antibody, PARK8 antibody, RIPK7 antibody, ROCO 2 antibody, ROCO2 antibody

UniProt: [Q5S007](#)

Pathways: [Regulation of G-Protein Coupled Receptor Protein Signaling](#), [Skeletal Muscle Fiber Development](#)

## Application Details

Application Notes: Recommended dilution: IHC:1:20-1:200, IF:1:50-1:200,

Restrictions: For Research Use only

## Handling

Format: Liquid

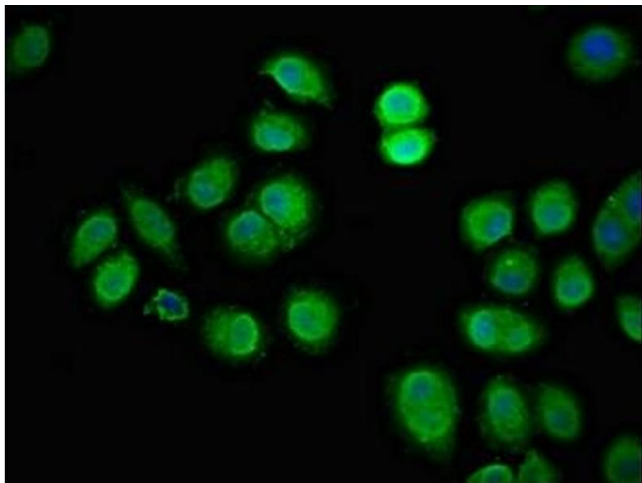
Buffer: Preservative: 0.03 % Proclin 300  
Constituents: 50 % Glycerol, 0.01M PBS, pH 7.4

Preservative: ProClin

Precaution of Use: This product contains ProClin: a POISONOUS AND HAZARDOUS SUBSTANCE which should be handled by trained staff only.

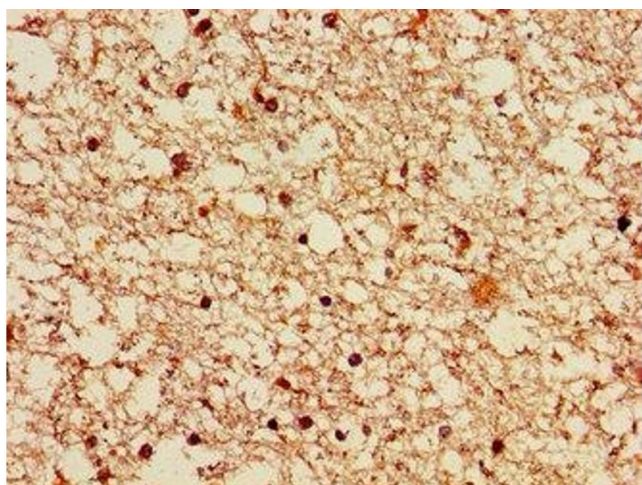
Storage: -20 °C, -80 °C

Storage Comment: Upon receipt, store at -20°C or -80°C. Avoid repeated freeze.



#### Immunofluorescence

**Image 1.** Immunofluorescent analysis of A549 cells using at dilution of 1:100 and Alexa Fluor 488-conjugated AffiniPure Goat Anti-Rabbit IgG(H+L)



#### Immunohistochemistry

**Image 2.** Immunohistochemistry of paraffin-embedded human brain tissue using at dilution of 1:100