

Datasheet for ABIN737556  
**anti-CHI3L1 antibody (AA 330-381)**[3 Images](#)[2 Publications](#)[Go to Product page](#)

## Overview

Quantity:	100 µL
Target:	CHI3L1
Binding Specificity:	AA 330-381
Reactivity:	Human, Mouse, Rat
Host:	Rabbit
Clonality:	Polyclonal
Conjugate:	This CHI3L1 antibody is un-conjugated
Application:	Western Blotting (WB), Immunohistochemistry (Paraffin-embedded Sections) (IHC (p)), Immunohistochemistry (Frozen Sections) (IHC (fro))

## Product Details

Immunogen:	KLH conjugated synthetic peptide derived from rat CGP-39/CHI3L1
Isotype:	IgG
Cross-Reactivity:	Human, Mouse, Rat
Purification:	Purified by Protein A.

## Target Details

Target:	CHI3L1
Alternative Name:	CHI3L1 ( <a href="#">CHI3L1 Products</a> )
Target Type:	Viral Protein

## Target Details

Background:	<p>Synonyms: Chitinase-3-like protein 1, Cartilage glycoprotein 39, CGP-39, GP-39, Chi3l1</p> <p>Background: Carbohydrate-binding lectin with a preference for chitin. Has no chitinase activity. May play a role in tissue remodeling and in the capacity of cells to respond to and cope with changes in their environment. Plays a role in T-helper cell type 2 (Th2) inflammatory response and IL-13-induced inflammation, regulating allergen sensitization, inflammatory cell apoptosis, dendritic cell accumulation and M2 macrophage differentiation. Facilitates invasion of pathogenic enteric bacteria into colonic mucosa and lymphoid organs. Mediates activation of AKT1 signaling pathway and subsequent IL8 production in colonic epithelial cells. Regulates antibacterial responses in lung by contributing to macrophage bacterial killing, controlling bacterial dissemination and augmenting host tolerance. Also regulates hyperoxia-induced injury, inflammation and epithelial apoptosis in lung (By similarity).</p>
-------------	---

Molecular Weight:	42kDa
-------------------	-------

Gene ID:	89824
----------	-------

## Application Details

Application Notes:	WB 1:300-5000 IHC-P 1:200-400 IHC-F 1:100-500
--------------------	---

Restrictions:	For Research Use only
---------------	-----------------------

## Handling

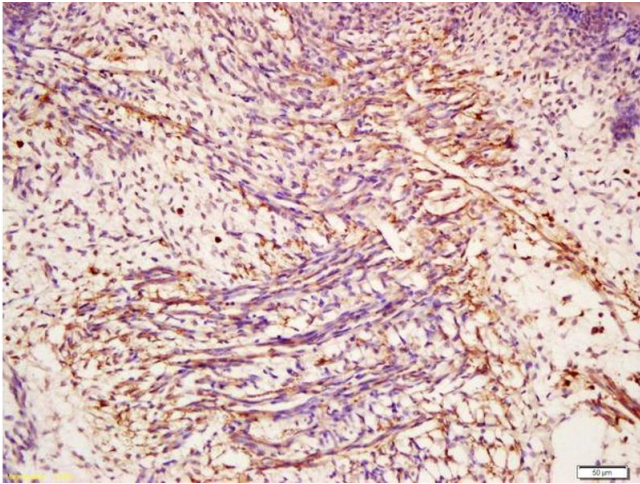
Format:	Liquid
Concentration:	1 µg/µL
Buffer:	0.01M TBS( pH 7.4) with 1 % BSA, 0.02 % Proclin300 and 50 % Glycerol.
Preservative:	ProClin
Precaution of Use:	This product contains ProClin: a POISONOUS AND HAZARDOUS SUBSTANCE, which should be handled by trained staff only.
Storage:	4 °C,-20 °C
Storage Comment:	Shipped at 4°C. Store at -20°C for one year. Avoid repeated freeze/thaw cycles.
Expiry Date:	12 months

Publications

Product cited in: Ben, Qiu, Zhou, Zhou, Zhang, Wu, Ju, Ni: "Ovalbumin enhances YKL-40, IL-5, GM-CSF, and eotaxin expression simultaneously in primarily cultured mouse tracheal epithelial cells." in: **In vitro cellular & developmental biology. Animal**, Vol. 50, Issue 3, pp. 243-50, (2014) ([PubMed](#)).

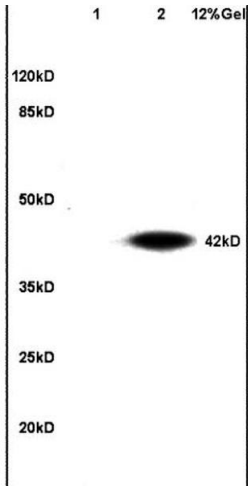
Tanaka, Matsumoto, Inoue, Umeda, Takai, Sumida: "Antigen-specific over-expression of human cartilage glycoprotein 39 on CD4+ CD25+ forkhead box protein 3+ regulatory T cells in the generation of glucose-6-phosphate isomerase-induced arthritis." in: **Clinical and experimental immunology**, Vol. 177, Issue 2, pp. 419-27, (2014) ([PubMed](#)).

Images



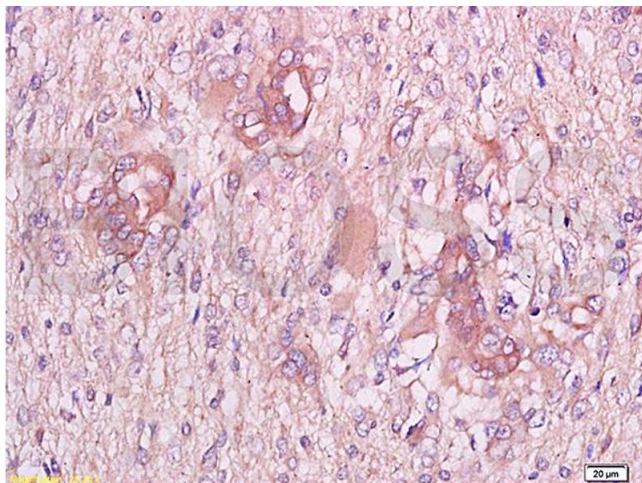
**Immunohistochemistry**

**Image 1.** Formalin-fixed and paraffin embedded mouse embryo labeled with Anti-CHI3L1 Polyclonal Antibody, Unconjugated (ABIN737556) at 1:300 followed by conjugation to the secondary antibody and DAB staining



**SDS-PAGE**

**Image 2.** L1 mouse embryo lysates L2 mouse liver lysates probed with Anti CGP-39/YKL-40 Polyclonal Antibody, Unconjugated (ABIN737556) at 1:200 in 4 °C. Followed by conjugation to secondary antibody at 1:3000 90min in 37 °C. Predicted band 42kD. Observed band size: 42kD



#### Immunohistochemistry

**Image 3.** Formalin-fixed and paraffin embedded human endometrium carcinoma labeled with Anti-CGP-39/YKL-40 Polyclonal Antibody, Unconjugated at 1:300 followed by conjugation to the secondary antibody and DAB staining