



[Go to Product page](#)

Datasheet for ABIN737676

anti-CCL2 antibody (AA 61-148)

4 Images

10 Publications

Overview

Quantity:	100 µL
Target:	CCL2
Binding Specificity:	AA 61-148
Reactivity:	Human, Mouse, Rat
Host:	Rabbit
Clonality:	Polyclonal
Conjugate:	This CCL2 antibody is un-conjugated
Application:	Western Blotting (WB), ELISA, Immunohistochemistry (Paraffin-embedded Sections) (IHC (p)), Immunofluorescence (Paraffin-embedded Sections) (IF (p)), Immunohistochemistry (Frozen Sections) (IHC (fro)), Immunofluorescence (Cultured Cells) (IF (cc))

Product Details

Immunogen:	KLH conjugated synthetic peptide derived from rat MCP-1
Isotype:	IgG
Cross-Reactivity:	Human, Mouse, Rat
Purification:	Purified by Protein A.

Target Details

Target:	CCL2
Alternative Name:	MCP1 (CCL2 Products)

Target Details

Background: Synonyms: MCP-1, Scya2, Sigje, C-C motif chemokine 2, Immediate-early serum-responsive protein JE, Monocyte chemoattractant protein 1, Monocyte chemotactic protein 1, Small-inducible cytokine A2, Ccl2, Je, Mcp1

Background: Chemotactic factor that attracts monocytes and basophils but not neutrophils or eosinophils. Augments monocyte anti-tumor activity. Has been implicated in the pathogenesis of diseases characterized by monocytic infiltrates, like psoriasis, rheumatoid arthritis or atherosclerosis. May be involved in the recruitment of monocytes into the arterial wall during the disease process of atherosclerosis. Monomer or homodimer, in equilibrium. Binds to CCR2 and CCR4. Is tethered on endothelial cells by glycosaminoglycan (GAG) side chains of proteoglycans. Processing at the N-terminus can regulate receptor and targetcell selectivity. Deletion of the N-terminal residue converts it from an activator of basophil to an eosinophil chemoattractant. Genetic variations in CCL2 determine Mycobacterium tuberculosis susceptibility Belongs to the intercrine beta (chemokine CC) family. The MCP-1(the monocyte chemotactic protein1) has many pits that regulates the function toward sex to turn to record the factor, it can induce to have relation with inflammation with the immunity various genes turn to record.The immunity MCP-1 set turns the male signal to mainly locate the afterbirth syrup inside.

Gene ID: 24770

UniProt: [P14844](#)

Pathways: [Cellular Response to Molecule of Bacterial Origin](#), [Positive Regulation of Immune Effector Process](#), [ER-Nucleus Signaling](#), [Unfolded Protein Response](#), [The Global Phosphorylation Landscape of SARS-CoV-2 Infection](#)

Application Details

Application Notes: WB 1:300-5000
ELISA 1:500-1000
IHC-P 1:200-400
IHC-F 1:100-500
IF(IHC-P) 1:50-200
IF(IHC-F) 1:50-200
IF(ICC) 1:50-200

Restrictions: For Research Use only

Handling

Format:	Liquid
Concentration:	1 µg/µL
Buffer:	0.01M TBS(pH 7.4) with 1 % BSA, 0.02 % Proclin300 and 50 % Glycerol.
Preservative:	ProClin
Precaution of Use:	This product contains ProClin: a POISONOUS AND HAZARDOUS SUBSTANCE, which should be handled by trained staff only.
Storage:	4 °C,-20 °C
Storage Comment:	Shipped at 4°C. Store at -20°C for one year. Avoid repeated freeze/thaw cycles.
Expiry Date:	12 months

Publications

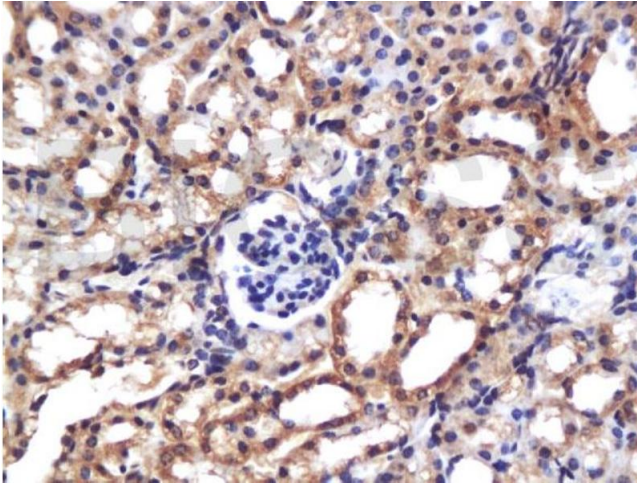
Product cited in: Li, Fang, Tian, Wang, Ao, Hou, Tong, Fan, Bai: "Curcumin attenuates the development of thoracic aortic aneurysm by inhibiting VEGF expression and inflammation." in: **Molecular medicine reports**, Vol. 16, Issue 4, pp. 4455-4462, (2018) ([PubMed](#)).

Kugo, Zaima, Onozato, Miyamoto, Hashimoto, Yanagimoto, Moriyama: "Suppressive effects of dietary EPA-rich fish oil on the degradation of elastin fibers in the aortic wall in nicotine-administered mice." in: **Food & function**, Vol. 8, Issue 8, pp. 2829-2835, (2017) ([PubMed](#)).

Kuracha, Thomas, Loggie, Govindarajan: "Patient-derived xenograft mouse models of pseudomyxoma peritonei recapitulate the human inflammatory tumor microenvironment." in: **Cancer medicine**, Vol. 5, Issue 4, pp. 711-9, (2016) ([PubMed](#)).

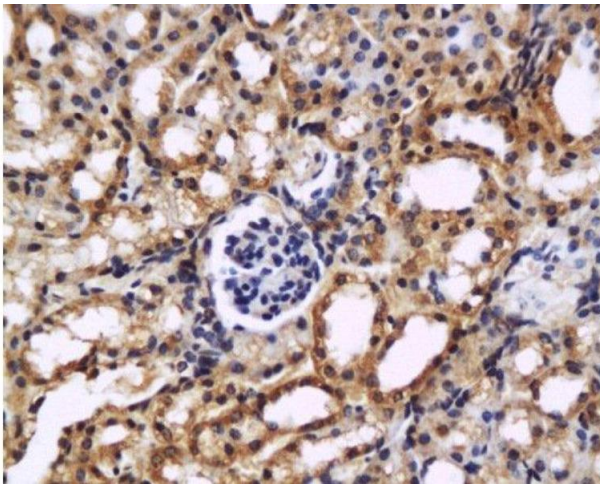
Jeong, Lee, Kim, Yang, Sung, Seong: "Irradiation-induced localization of IL-12-expressing mesenchymal stem cells to enhance the curative effect in murine metastatic hepatoma." in: **International journal of cancer. Journal international du cancer**, Vol. 137, Issue 3, pp. 721-30, (2015) ([PubMed](#)).

There are more publications referencing this product on: [Product page](#)



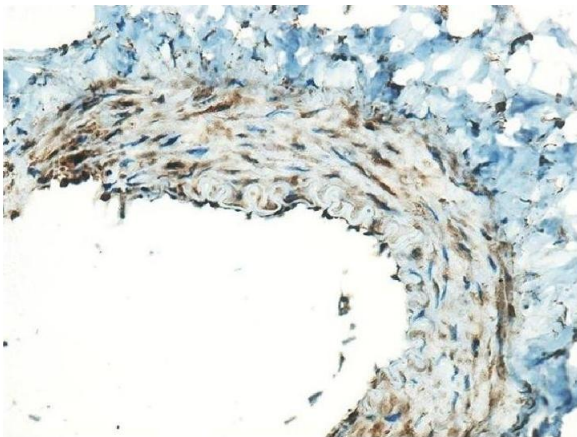
Immunohistochemistry

Image 1. Formalin-fixed and paraffin embedded mouse kidney labeled with Anti-MCP1/CCL2 Polyclonal Antibody, Unconjugated (ABIN737676) at 1:200 followed by conjugation to the secondary antibody and DAB staining.



Immunohistochemistry (Paraffin-embedded Sections)

Image 2. Formalin-fixed and paraffin embedded mouse kidney labeled with Anti-MCP1/CCL2 Polyclonal Antibody, Unconjugated at 1:200 followed by conjugation to the secondary antibody and DAB staining.



(a)

Immunohistochemistry

Image 3. Immunohistochemical staining for MCP-1 in the graft vessels (original magnification x400). (a) Surgical revascularization group: the expression of MCP-1 (brown staining of the granules) was obvious in the graft vessels wall. (b) Combined treatment group: the positive expression in the graft vessels was significantly decreased after islet transplantation. - figure provided by CiteAb. Source: PMID27119088

Please check the [product details page](#) for more images. Overall 4 images are available for ABIN737676.