

Datasheet for ABIN737781
anti-IGFBP2 antibody (AA 101-200)[Go to Product page](#)

4 Images

Overview

Quantity:	100 µL
Target:	IGFBP2
Binding Specificity:	AA 101-200
Reactivity:	Human, Rat, Mouse
Host:	Rabbit
Clonality:	Polyclonal
Conjugate:	This IGFBP2 antibody is un-conjugated
Application:	Western Blotting (WB), ELISA, Flow Cytometry (FACS), Immunohistochemistry (Paraffin-embedded Sections) (IHC (p)), Immunofluorescence (Cultured Cells) (IF (cc)), Immunofluorescence (Paraffin-embedded Sections) (IF (p)), Immunohistochemistry (Frozen Sections) (IHC (fro))

Product Details

Immunogen:	KLH conjugated synthetic peptide derived from mouse IGFBP2
Isotype:	IgG
Cross-Reactivity:	Human, Mouse, Rat
Purification:	Purified by Protein A.

Target Details

Target:	IGFBP2
Alternative Name:	IGFBP2 (IGFBP2 Products)

Target Details

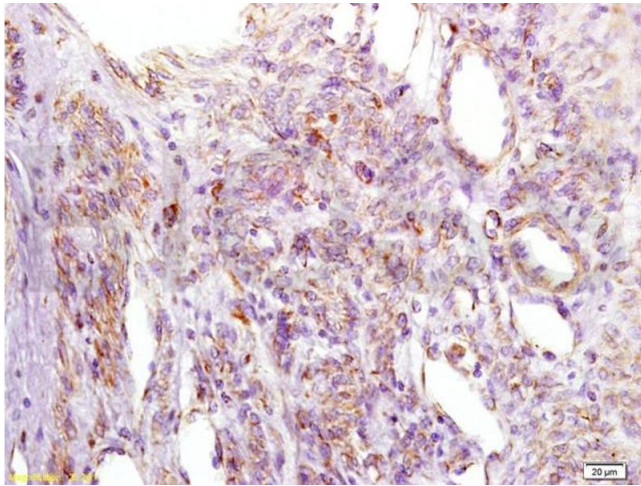
Background:	<p>Synonyms: IBP-2, Igfbp-2, AI255832, mIGFBP-2, Insulin-like growth factor-binding protein 2, IGF-binding protein 2, Igfbp2</p> <p>Background: Inhibits IGF-mediated growth and developmental rates (By similarity). IGF-binding proteins prolong the half-life of the IGFs and have been shown to either inhibit or stimulate the growth promoting effects of the IGFs on cell culture. They alter the interaction of IGFs with their cell surface receptors.</p>
Gene ID:	16008
UniProt:	P47877
Pathways:	Myometrial Relaxation and Contraction , Growth Factor Binding , Activated T Cell Proliferation

Application Details

Application Notes:	<p>WB 1:300-5000</p> <p>ELISA 1:500-1000</p> <p>FCM 1:20-100</p> <p>IHC-P 1:200-400</p> <p>IHC-F 1:100-500</p> <p>IF(IHC-P) 1:50-200</p> <p>IF(IHC-F) 1:50-200</p> <p>IF(ICC) 1:50-200</p>
Restrictions:	For Research Use only

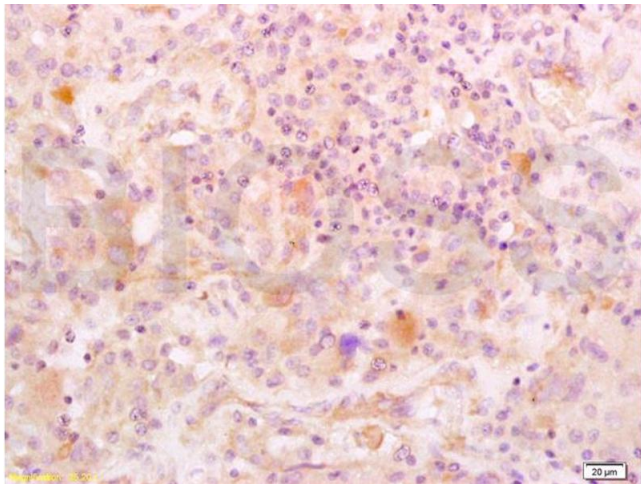
Handling

Format:	Liquid
Concentration:	1 µg/µL
Buffer:	0.01M TBS(pH 7.4) with 1 % BSA, 0.02 % Proclin300 and 50 % Glycerol.
Preservative:	ProClin
Precaution of Use:	This product contains ProClin: a POISONOUS AND HAZARDOUS SUBSTANCE, which should be handled by trained staff only.
Storage:	4 °C, -20 °C
Storage Comment:	Shipped at 4°C. Store at -20°C for one year. Avoid repeated freeze/thaw cycles.
Expiry Date:	12 months



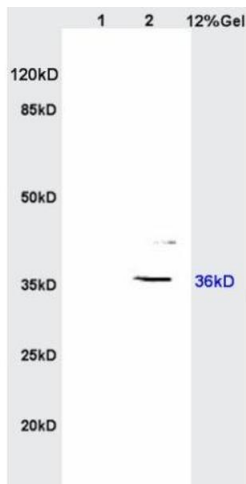
Immunohistochemistry

Image 1. Formalin-fixed and paraffin embedded human cervical carcinoma labeled with Anti-IGFBP2 Polyclonal Antibody, Unconjugated (ABIN737781) at 1:200 followed by conjugation to the secondary antibody and DAB staining.



Immunohistochemistry

Image 2. Formalin-fixed and paraffin embedded human glioma labeled with Anti-IGFBP2 Polyclonal Antibody, Unconjugated (ABIN737781) at 1:200 followed by conjugation to the secondary antibody and DAB staining.



Western Blotting

Image 3. L1 rat brain lysates L2 human colon carcinoma lysates probed with Anti IGFBP2 Polyclonal Antibody, Unconjugated at 1:200 overnight at 4°C. Followed by conjugation to secondary antibody -HRP) at 1:3000 for 90 min at 37°C.

Please check the [product details page](#) for more images. Overall 4 images are available for ABIN737781.