



[Go to Product page](#)

Datasheet for ABIN7379459

anti-DNAJC15 antibody (AA 59-150)

2 Images

Overview

Quantity:	50 µg
Target:	DNAJC15
Binding Specificity:	AA 59-150
Reactivity:	Human
Host:	Rabbit
Clonality:	Polyclonal
Conjugate:	This DNAJC15 antibody is un-conjugated
Application:	ELISA, Immunohistochemistry (IHC)

Product Details

Immunogen:	Recombinant Human DnaJ homolog subfamily C member 15 protein (59-150AA)
Isotype:	IgG
Cross-Reactivity:	Human
Purification:	>95%, Protein G purified

Target Details

Target:	DNAJC15
Alternative Name:	DNAJC15 (DNAJC15 Products)
Background:	Background: Negative regulator of the mitochondrial respiratory chain. Prevents mitochondrial hyperpolarization state and restricts mitochondrial generation of ATP (By similarity). Acts as an

Target Details

import component of the TIM23 translocase complex. Stimulates the ATPase activity of HSPA9.

Aliases: Cell growth inhibiting gene 22 protein antibody, Cell growth-inhibiting gene 22 protein antibody, DJC15_HUMAN antibody, DnaJ (Hsp40) homolog subfamily C member 15 antibody, DNAJ domain containing antibody, DnaJ homolog subfamily C member 15 antibody, DNAJC15 antibody, DNAJD1 antibody, GIG22 antibody, HSD18 antibody, MCJ antibody, Methylation controlled J protein antibody, Methylation-controlled J protein antibody

UniProt: [Q9Y5T4](#)

Application Details

Application Notes: Recommended dilution: IHC:1:200-1:500,

Restrictions: For Research Use only

Handling

Format: Liquid

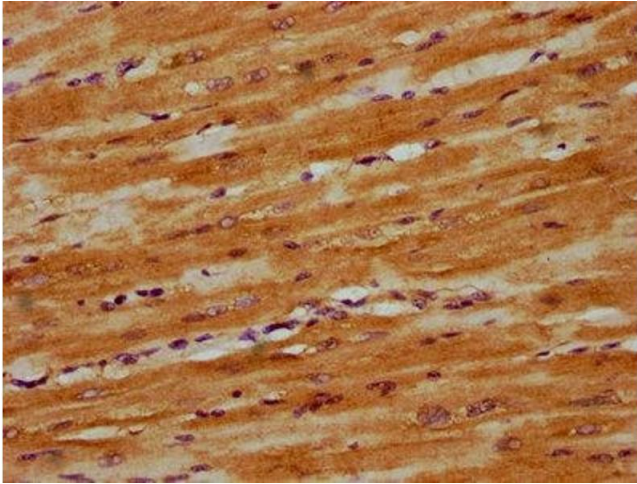
Buffer: Preservative: 0.03 % Proclin 300
Constituents: 50 % Glycerol, 0.01M PBS, pH 7.4

Preservative: ProClin

Precaution of Use: This product contains ProClin: a POISONOUS AND HAZARDOUS SUBSTANCE which should be handled by trained staff only.

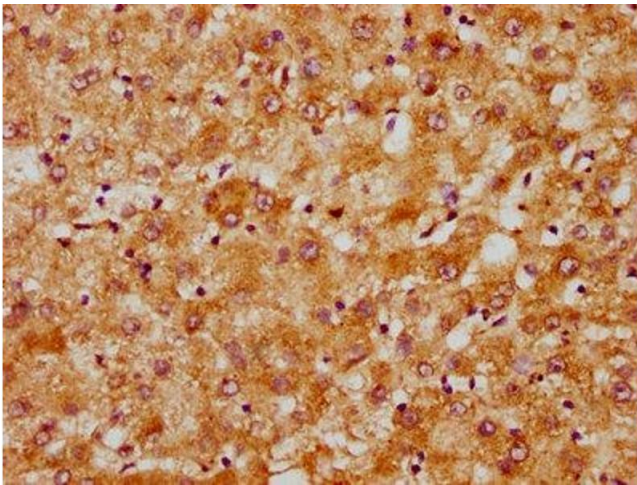
Storage: -20 °C,-80 °C

Storage Comment: Upon receipt, store at -20°C or -80°C. Avoid repeated freeze.



Immunohistochemistry

Image 1. IHC image of diluted at 1:300 and staining in paraffin-embedded human heart tissue performed on a Leica Bond™ system. After dewaxing and hydration, antigen retrieval was mediated by high pressure in a citrate buffer (pH 6.0). Section was blocked with 10 % normal goat serum 30 min at RT. Then primary antibody (1 % BSA) was incubated at 4 °C overnight. The primary is detected by a biotinylated secondary antibody and visualized using an HRP conjugated SP system.



Immunohistochemistry

Image 2. IHC image of diluted at 1:300 and staining in paraffin-embedded human liver tissue performed on a Leica Bond™ system. After dewaxing and hydration, antigen retrieval was mediated by high pressure in a citrate buffer (pH 6.0). Section was blocked with 10 % normal goat serum 30 min at RT. Then primary antibody (1 % BSA) was incubated at 4 °C overnight. The primary is detected by a biotinylated secondary antibody and visualized using an HRP conjugated SP system.