

Datasheet for ABIN738066
anti-SLC5A1 antibody (AA 401-500)

4 Images

1 Publication

[Go to Product page](#)

Overview

Quantity:	100 µL
Target:	SLC5A1
Binding Specificity:	AA 401-500
Reactivity:	Human, Mouse, Rat
Host:	Rabbit
Clonality:	Polyclonal
Conjugate:	This SLC5A1 antibody is un-conjugated
Application:	Western Blotting (WB), ELISA, Immunohistochemistry (Paraffin-embedded Sections) (IHC (p))

Product Details

Immunogen:	KLH conjugated synthetic peptide derived from mouse SGLT1
Isotype:	IgG
Cross-Reactivity:	Human, Mouse, Rat
Purification:	Purified by Protein A.

Target Details

Target:	SLC5A1
Alternative Name:	SGLT1 (SLC5A1 Products)
Background:	Synonyms: SglT1, Sodium/glucose cotransporter 1, Na(+)/glucose cotransporter 1, High affinity sodium-glucose cotransporter, Solute carrier family 5 member 1, Slc5a1

Target Details

Background: Actively transports glucose into cells by Na(+) cotransport with a Na(+) to glucose coupling ratio of 2:1. Efficient substrate transport in mammalian kidney is provided by the concerted action of a low affinity high capacity and a high affinity low capacity Na(+)/glucose cotransporter arranged in series along kidney proximal tubules.

Gene ID: 20537

UniProt: [Q8C3K6](#)

Application Details

Application Notes: WB 1:300-5000
ELISA 1:500-1000
IHC-P 1:200-400
IHC-F 1:100-500
IF(IHC-P) 1:50-200
IF(IHC-F) 1:50-200
IF(ICC) 1:50-200

Restrictions: For Research Use only

Handling

Format: Liquid

Concentration: 1 µg/µL

Buffer: 0.01M TBS(pH 7.4) with 1 % BSA, 0.02 % Proclin300 and 50 % Glycerol.

Preservative: ProClin

Precaution of Use: This product contains ProClin: a POISONOUS AND HAZARDOUS SUBSTANCE, which should be handled by trained staff only.

Storage: 4 °C,-20 °C

Storage Comment: Shipped at 4°C. Store at -20°C for one year. Avoid repeated freeze/thaw cycles.

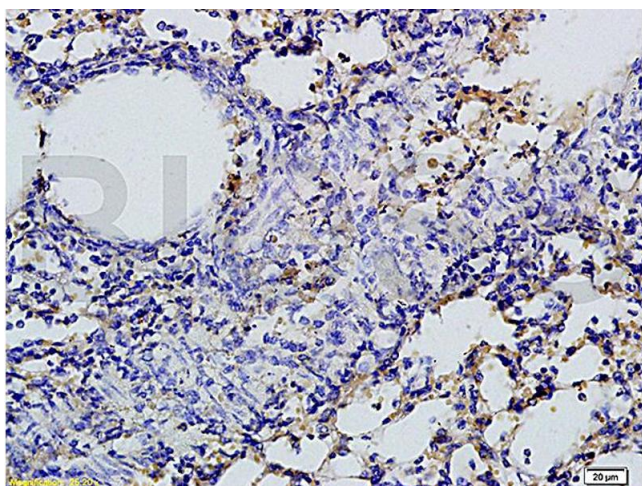
Expiry Date: 12 months

Publications

Product cited in: Chen, Ma, Huang, Zhang, Zhong, Han, Hu, Li: "Efficiency of transcellular transport and efflux of flavonoids with different glycosidic units from flavonoids of Litsea coreana L. in a MDCK

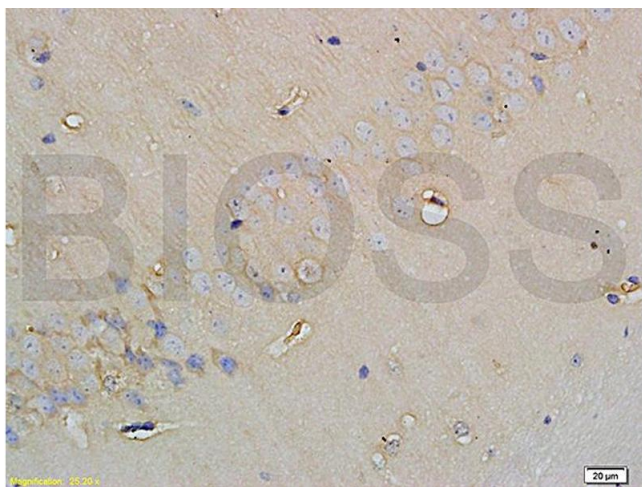
epithelial cell monolayer model." in: **European journal of pharmaceutical sciences : official journal of the European Federation for Pharmaceutical Sciences**, Vol. 53, pp. 69-76, (2014) ([PubMed](#)).

Images



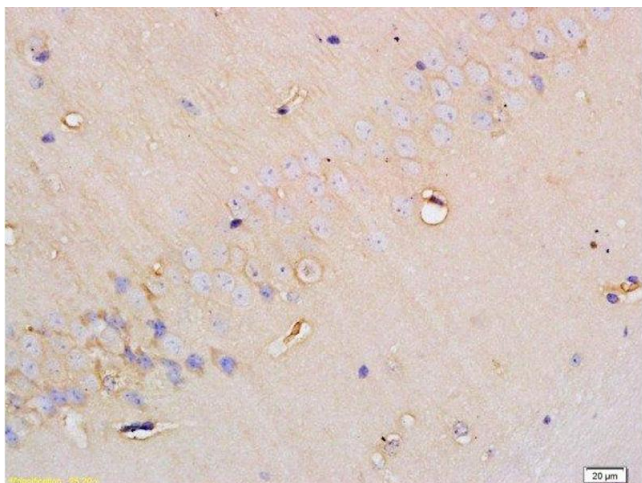
Immunohistochemistry

Image 1. Formalin-fixed and paraffin embedded rat lung tissue labeled with Rabbit Anti-SGLT1 Polyclonal Antibody, Unconjugated (ABIN738066) 1:200 followed by conjugation to the secondary antibody and DAB staining



Immunohistochemistry

Image 2. Formalin-fixed and paraffin embedded rat brain tissue labeled with Anti-SGLT1 Polyclonal Antibody, Unconjugated (ABIN738066) at 1:200 followed by conjugation to the secondary antibody and DAB staining



Immunohistochemistry (Paraffin-embedded Sections)

Image 3. Formalin-fixed and paraffin embedded rat brain tissue labeled with Anti-SGLT1 Polyclonal Antibody, Unconjugated at 1:200 followed by conjugation to the secondary antibody and DAB staining

Images

Please check the [product details page](#) for more images. Overall 4 images are available for ABIN738066.