

Datasheet for ABIN738306
anti-TFPI2 antibody (AA 135-235)[Go to Product page](#)

2 Images

1 Publication

Overview

Quantity:	100 µL
Target:	TFPI2
Binding Specificity:	AA 135-235
Reactivity:	Human, Rat
Host:	Rabbit
Clonality:	Polyclonal
Conjugate:	This TFPI2 antibody is un-conjugated
Application:	ELISA, Immunohistochemistry (Paraffin-embedded Sections) (IHC (p)), Immunofluorescence (Cultured Cells) (IF (cc)), Immunofluorescence (Paraffin-embedded Sections) (IF (p)), Immunohistochemistry (Frozen Sections) (IHC (fro))

Product Details

Immunogen:	KLH conjugated synthetic peptide derived from human TFPI2
Isotype:	IgG
Cross-Reactivity:	Human, Rat
Predicted Reactivity:	Mouse,Cow
Purification:	Purified by Protein A.

Target Details

Target:	TFPI2
---------	-------

Target Details

Alternative Name:	TFPI-2 (TFPI2 Products)
Background:	Synonyms: PP5, REF1, TFPI-2, Tissue factor pathway inhibitor 2, Placental protein 5, TFPI2 Background: May play a role in the regulation of plasmin-mediated matrix remodeling. Inhibits trypsin, plasmin, factor VIIa/tissue factor and weakly factor Xa. Has no effect on thrombin.
Gene ID:	7980
UniProt:	P48307

Application Details

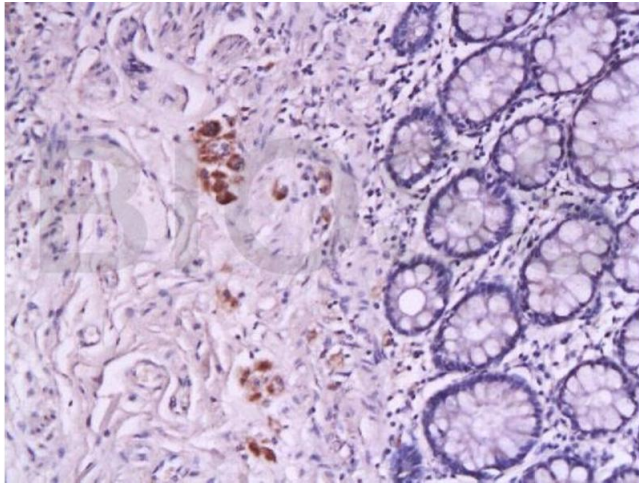
Application Notes:	ELISA 1:500-1000 IHC-P 1:200-400 IHC-F 1:100-500 IF(IHC-P) 1:50-200 IF(IHC-F) 1:50-200 IF(ICC) 1:50-200
Restrictions:	For Research Use only

Handling

Format:	Liquid
Concentration:	1 µg/µL
Buffer:	0.01M TBS(pH 7.4) with 1 % BSA, 0.02 % Proclin300 and 50 % Glycerol.
Preservative:	ProClin
Precaution of Use:	This product contains ProClin: a POISONOUS AND HAZARDOUS SUBSTANCE, which should be handled by trained staff only.
Storage:	4 °C,-20 °C
Storage Comment:	Shipped at 4°C. Store at -20°C for one year. Avoid repeated freeze/thaw cycles.
Expiry Date:	12 months

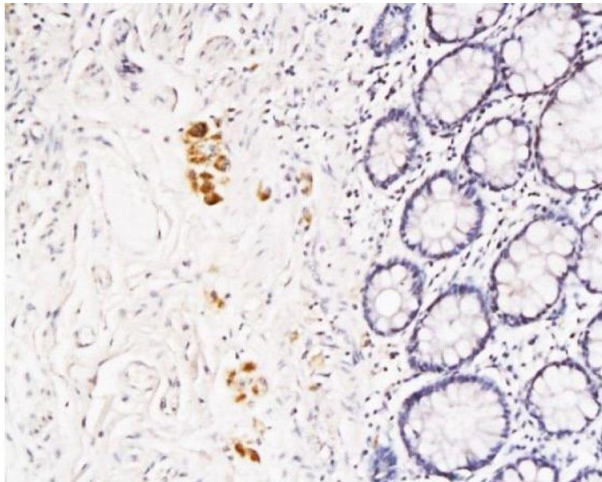
Publications

Product cited in:	Wang, Wang, Li, Li, Deng: "Expression of tissue factor pathway inhibitor-2 in gastric stromal tumor and its clinical significance." in: Experimental and therapeutic medicine , Vol. 7, Issue 2, pp. 513-517, (2014) (PubMed).
-------------------	---------------------------------------------------------------------------------------------------------------------------------------------------------------------------------------------------------------------------------------------------------



Immunohistochemistry

Image 1. Formalin-fixed and paraffin embedded rat colon tissue labeled with Anti-TFPI-2 Polyclonal Antibody, Unconjugated (ABIN738306) at 1:200 followed by conjugation to the secondary antibody and DAB staining



Immunohistochemistry (Paraffin-embedded Sections)

Image 2. Formalin-fixed and paraffin embedded rat colon tissue labeled with Anti-TFPI-2 Polyclonal Antibody, Unconjugated at 1:200 followed by conjugation to the secondary antibody and DAB staining