

Datasheet for ABIN738366  
**anti-Cyclin D2 antibody (AA 161-288)**

6 Images

1 Publication

[Go to Product page](#)

## Overview

Quantity:	100 µL
Target:	Cyclin D2 (CCND2)
Binding Specificity:	AA 161-288
Reactivity:	Human, Mouse, Rat
Host:	Rabbit
Clonality:	Polyclonal
Conjugate:	This Cyclin D2 antibody is un-conjugated
Application:	Western Blotting (WB), ELISA, Flow Cytometry (FACS), Immunofluorescence (Cultured Cells) (IF (cc)), Immunofluorescence (Paraffin-embedded Sections) (IF (p)), Immunohistochemistry (Paraffin-embedded Sections) (IHC (p)), Immunohistochemistry (Frozen Sections) (IHC (fro))

## Product Details

Immunogen:	KLH conjugated synthetic peptide derived from human Cyclin D2
Isotype:	IgG
Cross-Reactivity:	Human, Mouse, Rat
Purification:	Purified by Protein A.

## Target Details

Target:	Cyclin D2 (CCND2)
Alternative Name:	Cyclin D2 ( <a href="#">CCND2 Products</a> )

## Target Details

Background:	<p>Synonyms: MPPH3, KIAK2, G1/S-specific cyclin-D2, CCND2</p> <p>Background: Regulatory component of the cyclin D2-CDK4 (DC) complex that phosphorylates and inhibits members of the retinoblastoma (RB) protein family including RB1 and regulates the cell-cycle during G(1)/S transition. Phosphorylation of RB1 allows dissociation of the transcription factor E2F from the RB/E2F complex and the subsequent transcription of E2F target genes which are responsible for the progression through the G(1) phase.</p> <p>Hypophosphorylates RB1 in early G(1) phase. Cyclin D-CDK4 complexes are major integrators of various mitogenenic and antimitogenic signals. Also substrate for SMAD3, phosphorylating SMAD3 in a cell-cycle-dependent manner and repressing its transcriptional activity. Component of the ternary complex, cyclin D2/CDK4/CDKN1B, required for nuclear translocation and activity of the cyclin D-CDK4 complex (By similarity).</p>
Gene ID:	894
UniProt:	<a href="#">P30279</a>
Pathways:	<a href="#">Cell Division Cycle, Mitotic G1-G1/S Phases</a>

## Application Details

Application Notes:	<p>WB 1:300-5000</p> <p>ELISA 1:500-1000</p> <p>FCM 1:20-100</p> <p>IHC-P 1:200-400</p> <p>IHC-F 1:100-500</p> <p>IF(IHC-P) 1:50-200</p> <p>IF(IHC-F) 1:50-200</p> <p>IF(ICC) 1:50-200</p>
Restrictions:	For Research Use only

## Handling

Format:	Liquid
Concentration:	1 µg/µL
Buffer:	0.01M TBS( pH 7.4) with 1 % BSA, 0.02 % Proclin300 and 50 % Glycerol.
Preservative:	ProClin
Precaution of Use:	This product contains ProClin: a POISONOUS AND HAZARDOUS SUBSTANCE, which should be

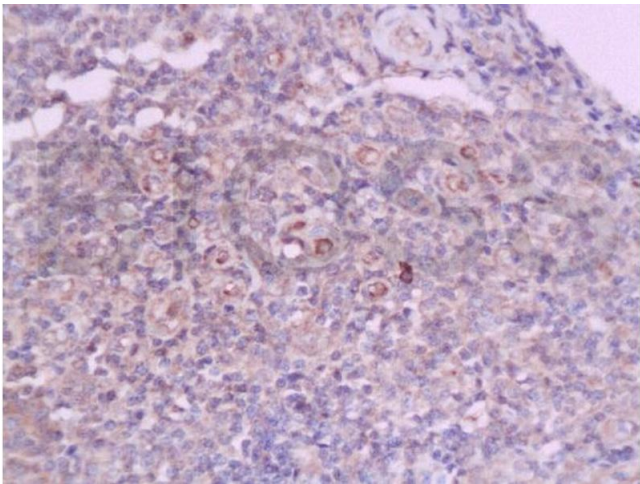
Handling

	handled by trained staff only.
Storage:	4 °C,-20 °C
Storage Comment:	Shipped at 4°C. Store at -20°C for one year. Avoid repeated freeze/thaw cycles.
Expiry Date:	12 months

Publications

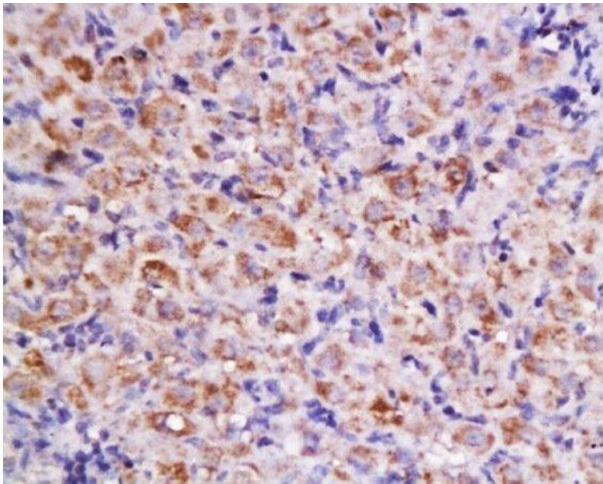
Product cited in:	Wang, Wu, Gao, Chen, Gu, Ding, Guo: "Elevated toll-like receptor 3 inhibits pancreatic $\beta$ -cell proliferation through G1 phase cell cycle arrest." in: <b>Molecular and cellular endocrinology</b> , Vol. 377, Issue 1-2, pp. 112-22, (2013) ( <a href="#">PubMed</a> ).
-------------------	---

Images



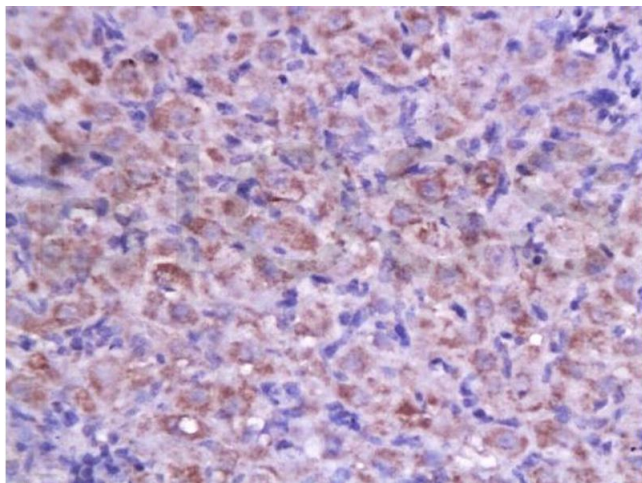
Immunohistochemistry

**Image 1.** Formalin-fixed and paraffin embedded human flat moss tinea tissue labeled with Anti-Cyclin D2 Polyclonal Antibody, Unconjugated (ABIN738366) at 1:200 followed by conjugation to the secondary antibody and DAB staining



Immunohistochemistry (Paraffin-embedded Sections)

**Image 2.** Formalin-fixed and paraffin embedded rat ovary labeled with Anti-Cyclin D2 Polyclonal Antibody, Unconjugated at 1:200 followed by conjugation to the secondary antibody and DAB staining.



#### Immunohistochemistry

**Image 3.** Formalin-fixed and paraffin embedded rat ovary labeled with Anti-Cyclin D2 Polyclonal Antibody, Unconjugated (ABIN738366) at 1:200 followed by conjugation to the secondary antibody and DAB staining.

Please check the [product details page](#) for more images. Overall 6 images are available for ABIN738366.