

Datasheet for ABIN738381

anti-Ectodysplasin A antibody (AA 131-230)**2** Images**1** Publication[Go to Product page](#)

Overview

Quantity:	100 µL
Target:	Ectodysplasin A (EDA)
Binding Specificity:	AA 131-230
Reactivity:	Human, Mouse, Rat
Host:	Rabbit
Clonality:	Polyclonal
Conjugate:	This Ectodysplasin A antibody is un-conjugated
Application:	Western Blotting (WB), ELISA, Flow Cytometry (FACS), Immunofluorescence (Cultured Cells) (IF (cc)), Immunofluorescence (Paraffin-embedded Sections) (IF (p)), Immunohistochemistry (Paraffin-embedded Sections) (IHC (p)), Immunohistochemistry (Frozen Sections) (IHC (fro)), Immunocytochemistry (ICC)

Product Details

Immunogen:	KLH conjugated synthetic peptide derived from human of human ED-1
Isotype:	IgG
Specificity:	This will recognize both the membrane bound and the secreted form of Ectodysplasin.
Cross-Reactivity:	Human, Mouse, Rat
Predicted Reactivity:	Cow,Pig,Horse
Purification:	Purified by Protein A.

Target Details

Target:	Ectodysplasin A (EDA)
Alternative Name:	EDA (EDA Products)
Background:	<p>Synonyms: ED1, HED, EDA1, EDA2, HED1, ODT1, XHED, ECTD1, XLHED, ED1-A1, ED1-A2, EDA-A1, EDA-A2, STHAGX1, Ectodysplasin-A, Ectodermal dysplasia protein, EDA protein, EDA</p> <p>Background: Seems to be involved in epithelial-mesenchymal signaling during morphogenesis of ectodermal organs. Isoform 1 binds only to the receptor EDAR, while isoform 3 binds exclusively to the receptor XEDAR.</p>
Gene ID:	1896
UniProt:	Q92838
Pathways:	Tube Formation

Application Details

Application Notes:	WB 1:300-5000 ELISA 1:500-1000 FCM 1:20-100 IHC-P 1:200-400 IHC-F 1:100-500 IF(IHC-P) 1:50-200 IF(IHC-F) 1:50-200 IF(ICC) 1:50-200 ICC 1:100-500
Restrictions:	For Research Use only

Handling

Format:	Liquid
Concentration:	1 µg/µL
Buffer:	0.01M TBS(pH 7.4) with 1 % BSA, 0.02 % Proclin300 and 50 % Glycerol.
Preservative:	ProClin
Precaution of Use:	This product contains ProClin: a POISONOUS AND HAZARDOUS SUBSTANCE, which should be handled by trained staff only.
Storage:	4 °C,-20 °C

Handling

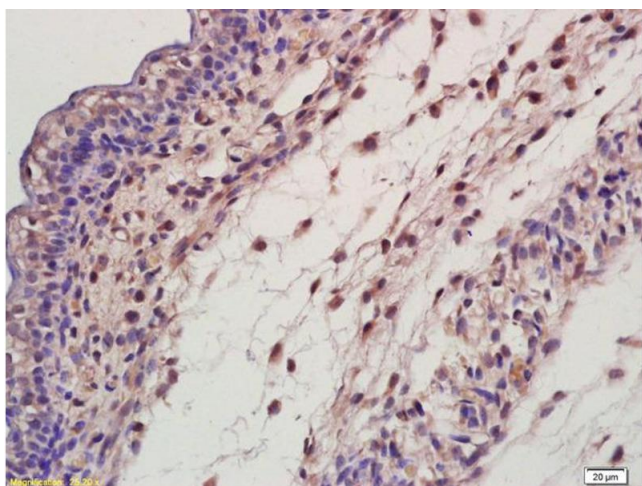
Storage Comment: Shipped at 4°C. Store at -20°C for one year. Avoid repeated freeze/thaw cycles.

Expiry Date: 12 months

Publications

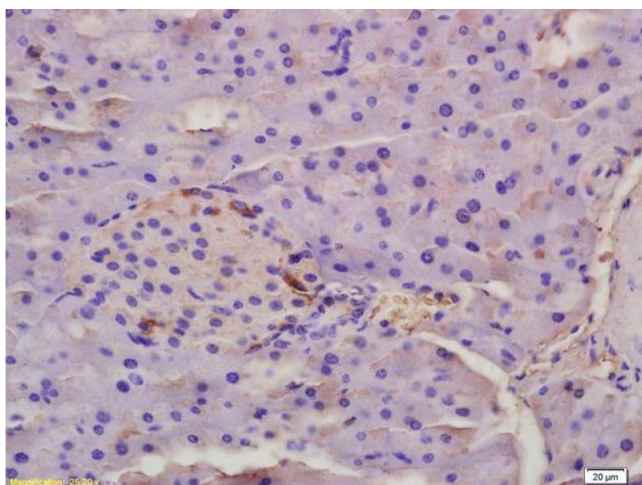
Product cited in: Oya, Yokoyama, Kokuryo, Uno, Yamauchi, Nagino: "Inhibition of Toll-like receptor 4 suppresses liver injury induced by biliary obstruction and subsequent intraportal lipopolysaccharide injection." in: **American journal of physiology. Gastrointestinal and liver physiology**, Vol. 306, Issue 3, pp. G244-52, (2014) ([PubMed](#)).

Images



Immunohistochemistry

Image 1. Formalin-fixed and paraffin embedded mouse embryo labeled Anti-ED-1 Polyclonal Antibody, Unconjugated (ABIN738381) at 1:200, followed by conjugation to the secondary antibody and DAB staining



Immunohistochemistry

Image 2. Formalin-fixed and paraffin embedded rat placenta tissue labeled Anti-ED-1 Polyclonal Antibody, Unconjugated (ABIN738381) at 1:200, followed by conjugation to the secondary antibody and DAB staining