



[Go to Product page](#)

Datasheet for ABIN738396

anti-CHRM1 antibody (AA 321-420)

3 Images

Overview

Quantity:	100 µL
Target:	CHRM1
Binding Specificity:	AA 321-420
Reactivity:	Rat, Human, Mouse, Goat
Host:	Rabbit
Clonality:	Polyclonal
Conjugate:	This CHRM1 antibody is un-conjugated
Application:	Western Blotting (WB), ELISA, Immunohistochemistry (Paraffin-embedded Sections) (IHC (p))

Product Details

Immunogen:	KLH conjugated synthetic peptide derived from human muscarinic Acetylcholine Receptor 1
Isotype:	IgG
Cross-Reactivity:	Goat, Human, Mouse, Rat
Predicted Reactivity:	Cow,Pig,Horse
Purification:	Purified by Protein A.

Target Details

Target:	CHRM1
Alternative Name:	muscarinic Acetylcholine Receptor 1 (CHRM1 Products)
Background:	Synonyms: M1, HM1, M1R, Muscarinic acetylcholine receptor M1, CHRM1

Target Details

Background: The muscarinic acetylcholine receptor mediates various cellular responses, including inhibition of adenylate cyclase, breakdown of phosphoinositides and modulation of potassium channels through the action of G proteins. Primary transducing effect is Pi turnover.

Gene ID: 1128

UniProt: [P11229](#)

Pathways: [Synaptic Membrane](#)

Application Details

Application Notes: WB 1:300-5000
ELISA 1:500-1000
IHC-P 1:200-400

Restrictions: For Research Use only

Handling

Format: Liquid

Concentration: 1 µg/µL

Buffer: 0.01M TBS(pH 7.4) with 1 % BSA, 0.02 % Proclin300 and 50 % Glycerol.

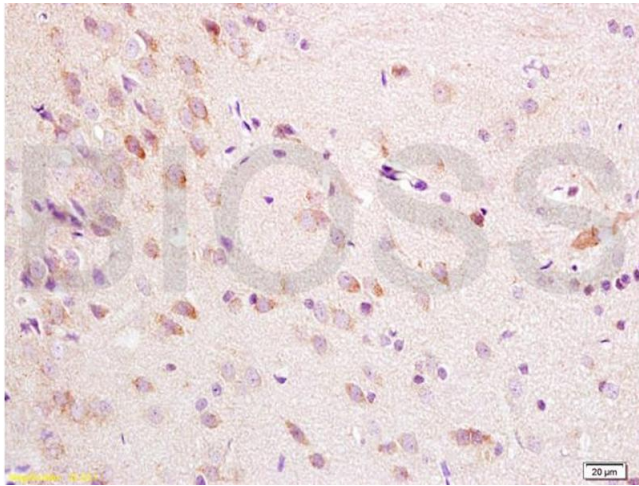
Preservative: ProClin

Precaution of Use: This product contains ProClin: a POISONOUS AND HAZARDOUS SUBSTANCE, which should be handled by trained staff only.

Storage: 4 °C,-20 °C

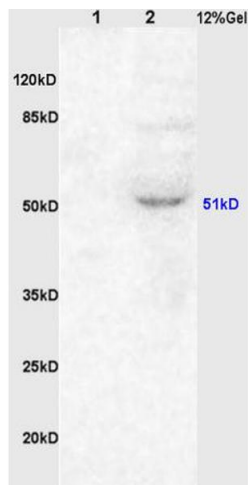
Storage Comment: Shipped at 4°C. Store at -20°C for one year. Avoid repeated freeze/thaw cycles.

Expiry Date: 12 months



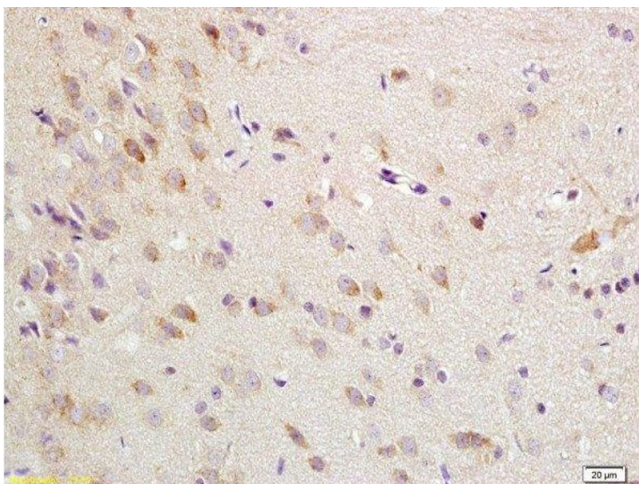
Immunohistochemistry

Image 1. Formalin-fixed and paraffin embedded rat brain tissue labeled with Anti-ChRM1/Acetylcholine receptor(M1) Polyclonal Antibody, Unconjugated (ABIN738396) at 1:200 followed by conjugation to the secondary antibody, (SP-0023), and DAB staining



SDS-PAGE

Image 2. L1 rat kidney lysates, L2 rat brain lysates probed (ABIN738396) Anti-ChRM1/Acetylcholine receptor(M1) Polyclonal, Unconjugated at 1:200 in 4 °C. Followed by conjugation to secondary antibody at 1:3000 90min in 37 °C. Predicted band and observed band size: 51kD.



Immunohistochemistry (Paraffin-embedded Sections)

Image 3. Formalin-fixed and paraffin embedded rat brain tissue labeled with Anti-ChRM1/Acetylcholine receptor(M1) Polyclonal Antibody, Unconjugated at 1:200 followed by conjugation to the secondary antibody, (SP-0023), and DAB staining