

Datasheet for ABIN738426

anti-Atp1b2/Na+K+ATPase (AA 201-290) antibody[Go to Product page](#)**1** Validation**2** Images

Overview

Quantity:	100 µL
Target:	Atp1b2/Na+K+ATPase
Binding Specificity:	AA 201-290
Reactivity:	Human, Mouse, Rat
Host:	Rabbit
Clonality:	Polyclonal
Conjugate:	Un-conjugated
Application:	Western Blotting (WB), Immunofluorescence (Cultured Cells) (IF (cc)), Immunofluorescence (Paraffin-embedded Sections) (IF (p)), Immunohistochemistry (Frozen Sections) (IHC (fro)), ELISA, Immunocytochemistry (ICC)

Product Details

Immunogen:	KLH conjugated synthetic peptide derived from human ATP1b2
Isotype:	IgG
Cross-Reactivity:	Human, Mouse, Rat
Predicted Reactivity:	Cow,Pig,Horse,Rabbit,Guinea Pig
Purification:	Purified by Protein A.

Target Details

Target:	Atp1b2/Na+K+ATPase
---------	--------------------

Target Details

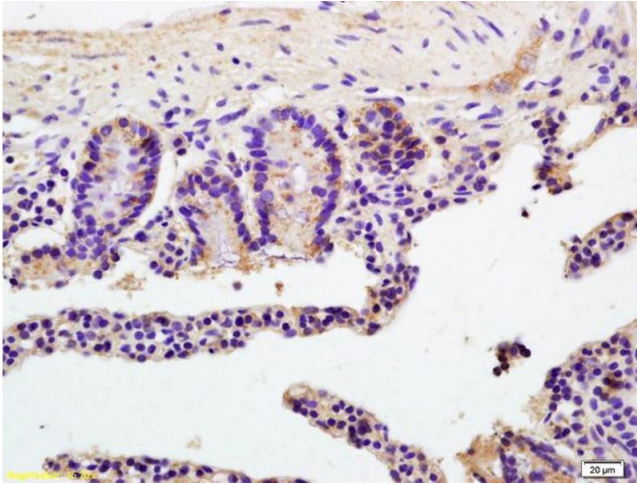
Background:	Synonyms: AMOG, Sodium/potassium-transporting ATPase subunit beta-2, Adhesion molecule in glia, Sodium/potassium-dependent ATPase subunit beta-2, ATP1B2 Background: This is the non-catalytic component of the active enzyme, which catalyzes the hydrolysis of ATP coupled with the exchange of Na(+) and K(+) ions across the plasma membrane. The exact function of the beta-2 subunit is not known. Mediates cell adhesion of neurons and astrocytes, and promotes neurite outgrowth.
Gene ID:	482
UniProt:	P14415

Application Details

Application Notes:	WB 1:300-5000 ELISA 1:500-1000 IHC-P 1:200-400 IHC-F 1:100-500 IF(IHC-P) 1:50-200 IF(IHC-F) 1:50-200 IF(ICC) 1:50-200 ICC 1:100-500
Restrictions:	For Research Use only

Handling

Format:	Liquid
Concentration:	1 µg/µL
Buffer:	0.01M TBS(pH 7.4) with 1 % BSA, 0.02 % Proclin300 and 50 % Glycerol.
Preservative:	ProClin
Precaution of Use:	This product contains ProClin: a POISONOUS AND HAZARDOUS SUBSTANCE, which should be handled by trained staff only.
Storage:	4 °C,-20 °C
Storage Comment:	Shipped at 4°C. Store at -20°C for one year. Avoid repeated freeze/thaw cycles.
Expiry Date:	12 months



Immunohistochemistry

Image 1. Formalin-fixed and paraffin embedded mouse colon labeled with Anti- ATP1b2/Na+K+ATPase Polyclonal Antibody, Unconjugated (ABIN738426) at 1:200 followed by conjugation to the secondary antibody and DAB staining



SDS-PAGE

Image 2. L1 rat kidney lysates L2 rat colon lysates probed with Anti ATP1b2/Na+K+ATPase Polyclonal Antibody, Unconjugated (ABIN738426) at 1:200 overnight at 4 °C. Followed by conjugation to secondary antibody at 1:3000 for 90 min at 37 °C. Predicted band 33kD. Observed band size: 33kD.



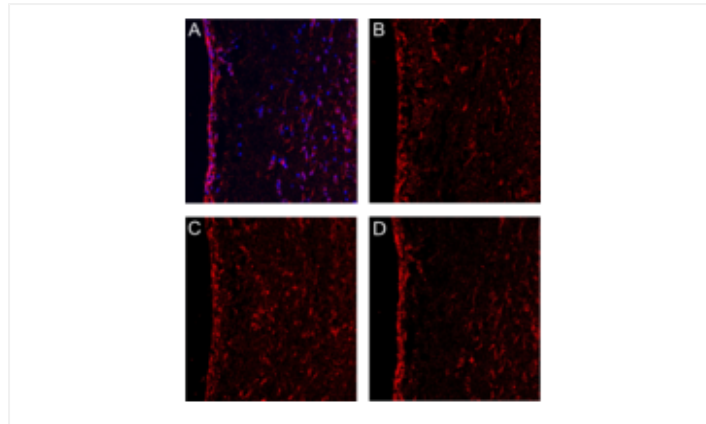
Successfully validated (Immunofluorescence (IF))

by [Memorial Sloan-Kettering Cancer Center, Parada lab](#)

Report Number: 100012

Date: May 11 2016

Target:	Atp1b2/Na+K+ATPase (ATP1B2)
Method validated:	Immunofluorescence (IF)
Positive Control:	Wild-type mouse adult brain cryo-sections
Negative Control:	Rabbit IgG
Notes:	The antibody showed signals along the subventricular zone, which is consistent with the RNA expression analysis.
Primary Antibody:	ABIN738426
Secondary Antibody:	Donkey-anti-Rabbit-Cy3
Protocol:	<ul style="list-style-type: none">• Wild-type mouse adult brain was dissected, fixed in 4% PFA for over/night, saturated in 30% sucrose, mounted in Cryo, and sectioned into 12µm sections.• Immunostaining for Cryo Sections:<ul style="list-style-type: none">◦ Dry slides at 50-55°C for 15-30min (or RT for 30min).◦ Wash with PBS 5min X 3 (shake gently).◦ Block with 10% Normal Donkey Serum (NDS) at RT for 1h.◦ Incubate with ABIN738426 diluted 1:10 - 1:800 in 2% NDS at 4°C overnight.◦ Wash with PBS 5min X 3.◦ Incubate with the secondary antibody Donkey-anti-Rabbit-Cy3 together with DAPI 1:100 at RT for 1h (prepared in 2% NDS), cover the chamber with foil.◦ Wash with PBS 5min X 3.◦ Add three drops of water-based Immu-mount.◦ Cover with 24 X 60 cover glass.• Imaging:<ul style="list-style-type: none">◦ Images were taken using a Zeiss Axio2-Imaging system, 20X-0.5NA-Dry Dye-1004-072 objective, DAPI and Cy3 channel.
Experimental Notes:	ABIN738426 worked within 1:50–1:400, worked well at 1:400.



Validation image no. 1 for anti-Atp1b2/Na+K+ATPase (AA 201-290) antibody (ABIN738426)

IF validation of ATP1B2 antibody ABIN738426 on mouse brain sections. A. ABIN738426 diluted 1:400 (red), DAPI counterstaining (blue). B. Dilution factor 1:50. C. Dilution factor 1:200. D. Dilution factor 1:400.