

Datasheet for ABIN738501  
**anti-Fibrillin 1 antibody (AA 401-500)**[Go to Product page](#)

## 3 Images

## Overview

Quantity:	100 µL
Target:	Fibrillin 1 (FBN1)
Binding Specificity:	AA 401-500
Reactivity:	Human, Rat
Host:	Rabbit
Clonality:	Polyclonal
Conjugate:	This Fibrillin 1 antibody is un-conjugated
Application:	ELISA, Immunohistochemistry (Paraffin-embedded Sections) (IHC (p)), Immunohistochemistry (Frozen Sections) (IHC (fro)), Immunofluorescence (Cultured Cells) (IF (cc)), Immunofluorescence (Paraffin-embedded Sections) (IF (p))

## Product Details

Immunogen:	KLH conjugated synthetic peptide derived from human FBN1
Isotype:	IgG
Cross-Reactivity:	Human, Rat
Predicted Reactivity:	Mouse
Purification:	Purified by Protein A.

## Target Details

Target:	Fibrillin 1 (FBN1)
---------	--------------------

## Target Details

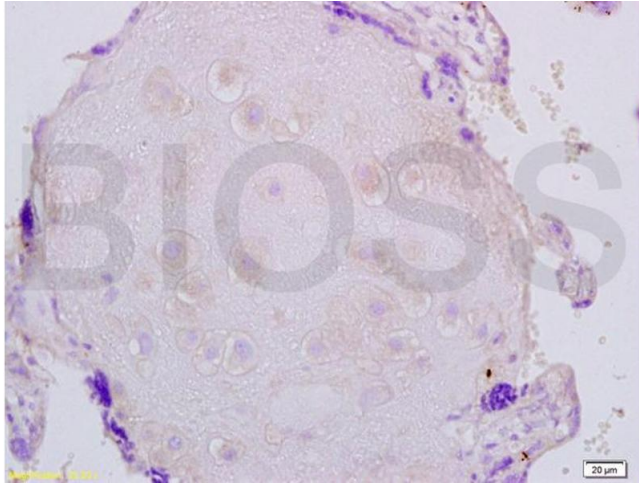
Alternative Name:	Fibrillin 1 ( <a href="#">FBN1 Products</a> )
Background:	<p>Synonyms: FBN, SGS, WMS, MASS, MFS1, OCTD, SSKS, WMS2, ACMICD, ECTOL1, GPHYS2, Fibrillin-1, FBN1</p> <p>Background: Fibrillins are structural components of 10-12 nm extracellular calcium-binding microfibrils, which occur either in association with elastin or in elastin-free bundles. Fibrillin-1-containing microfibrils provide long-term force bearing structural support. Regulates osteoblast maturation by controlling TGF-beta bioavailability and calibrating TGF-beta and BMP levels, respectively.</p>
Gene ID:	2200
UniProt:	<a href="#">P35555</a>
Pathways:	<a href="#">Maintenance of Protein Location</a> , <a href="#">SARS-CoV-2 Protein Interactome</a>

## Application Details

Application Notes:	<p>ELISA 1:500-1000</p> <p>IHC-P 1:200-400</p> <p>IHC-F 1:100-500</p> <p>IF(IHC-P) 1:50-200</p> <p>IF(IHC-F) 1:50-200</p> <p>IF(ICC) 1:50-200</p>
Restrictions:	For Research Use only

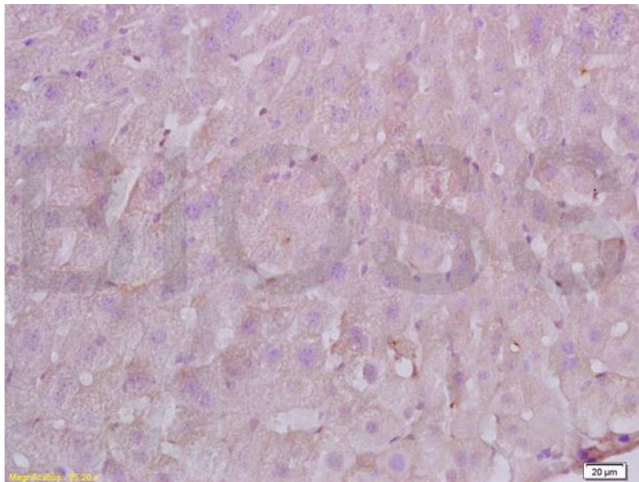
## Handling

Format:	Liquid
Concentration:	1 µg/µL
Buffer:	0.01M TBS( pH 7.4) with 1 % BSA, 0.02 % Proclin300 and 50 % Glycerol.
Preservative:	ProClin
Precaution of Use:	This product contains ProClin: a POISONOUS AND HAZARDOUS SUBSTANCE, which should be handled by trained staff only.
Storage:	4 °C,-20 °C
Storage Comment:	Shipped at 4°C. Store at -20°C for one year. Avoid repeated freeze/thaw cycles.
Expiry Date:	12 months



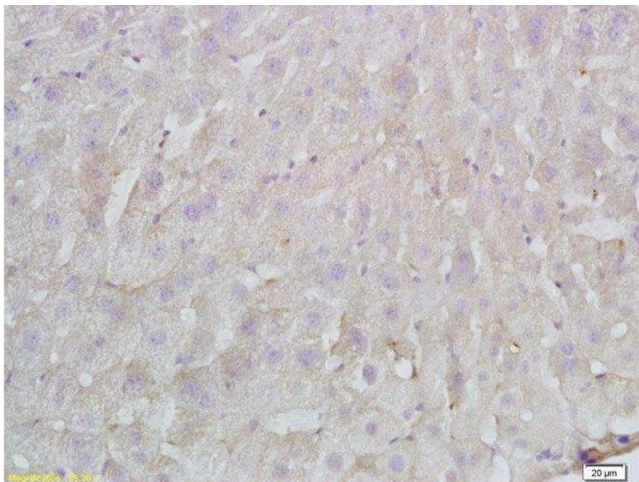
#### Immunohistochemistry

**Image 1.** Formalin-fixed and paraffin embedded human placenta labeled with Anti-FBN1/fibrillin 1 Polyclonal Antibody, Unconjugated (ABIN738501) at 1:200 followed by conjugation to the secondary antibody and DAB staining.



#### Immunohistochemistry

**Image 2.** Formalin-fixed and paraffin embedded Rat liver labeled with Anti-FBN1/fibrillin 1 Polyclonal Antibody, Unconjugated (ABIN738501) at 1:200 followed by conjugation to the secondary antibody and DAB staining.



#### Immunohistochemistry (Paraffin-embedded Sections)

**Image 3.** Formalin-fixed and paraffin embedded Rat liver labeled with Anti-FBN1/fibrillin 1 Polyclonal Antibody, Unconjugated at 1:200 followed by conjugation to the secondary antibody and DAB staining.