

Datasheet for ABIN738921
anti-TRAF3 antibody (AA 101-200)

5 Images

[Go to Product page](#)

Overview

Quantity:	100 µL
Target:	TRAF3
Binding Specificity:	AA 101-200
Reactivity:	Human, Mouse
Host:	Rabbit
Clonality:	Polyclonal
Conjugate:	This TRAF3 antibody is un-conjugated
Application:	Western Blotting (WB), ELISA, Flow Cytometry (FACS), Immunofluorescence (Cultured Cells) (IF (cc)), Immunofluorescence (Paraffin-embedded Sections) (IF (p)), Immunohistochemistry (Paraffin-embedded Sections) (IHC (p)), Immunohistochemistry (Frozen Sections) (IHC (fro))

Product Details

Immunogen:	KLH conjugated synthetic peptide derived from human TRAF3
Isotype:	IgG
Cross-Reactivity:	Human, Mouse
Predicted Reactivity:	Rat
Purification:	Purified by Protein A.

Target Details

Target:	TRAF3
---------	-------

Target Details

Alternative Name:	TRAF3 (TRAF3 Products)
Background:	<p>Synonyms: CAP1, LAP1, CAP-1, CRAF1, IIAE5, CD40bp, TNF receptor-associated factor 3, CD40 receptor-associated factor 1, CD40-binding protein, LMP1-associated protein 1, TRAF3</p> <p>Background: Regulates pathways leading to the activation of NF-kappa-B and MAP kinases, and plays a central role in the regulation of B-cell survival. Part of signaling pathways leading to the production of cytokines and interferon. Required for normal antibody isotype switching from IgM to IgG. Plays a role T-cell dependent immune responses. Plays a role in the regulation of antiviral responses. Is an essential constituent of several E3 ubiquitin-protein ligase complexes. May have E3 ubiquitin-protein ligase activity and promote 'Lys-63'-linked ubiquitination of target proteins. Inhibits activation of NF-kappa-B in response to LTBR stimulation. Inhibits TRAF2-mediated activation of NF-kappa-B. Down-regulates proteolytic processing of NFKB2, and thereby inhibits non-canonical activation of NF-kappa-B. Promotes ubiquitination and proteasomal degradation of MAP3K14.</p>
Gene ID:	7187
UniProt:	Q13114
Pathways:	NF-kappaB Signaling , Apoptosis , TLR Signaling , Activation of Innate immune Response , Hepatitis C , Toll-Like Receptors Cascades

Application Details

Application Notes:	WB 1:300-5000 ELISA 1:500-1000 FCM 1:20-100 IHC-P 1:200-400 IHC-F 1:100-500 IF(IHC-P) 1:50-200 IF(IHC-F) 1:50-200 IF(ICC) 1:50-200
Restrictions:	For Research Use only

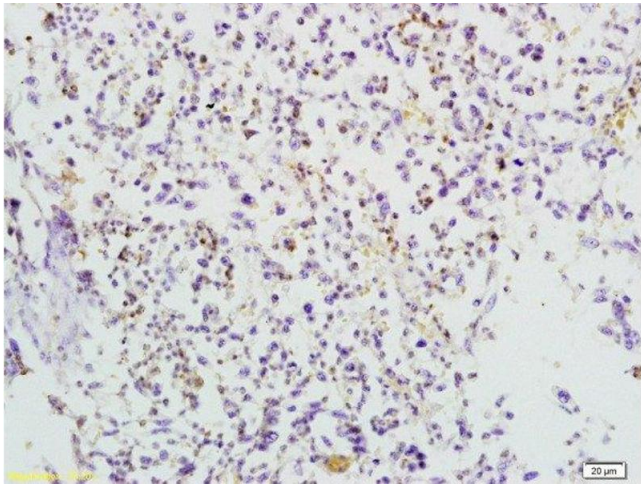
Handling

Format:	Liquid
Concentration:	1 µg/µL

Handling

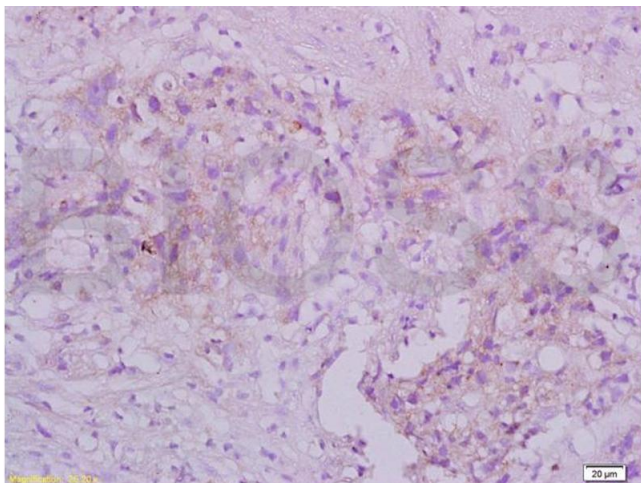
Buffer:	0.01M TBS(pH 7.4) with 1 % BSA, 0.02 % Proclin300 and 50 % Glycerol.
Preservative:	ProClin
Precaution of Use:	This product contains ProClin: a POISONOUS AND HAZARDOUS SUBSTANCE, which should be handled by trained staff only.
Storage:	4 °C,-20 °C
Storage Comment:	Shipped at 4°C. Store at -20°C for one year. Avoid repeated freeze/thaw cycles.
Expiry Date:	12 months

Images



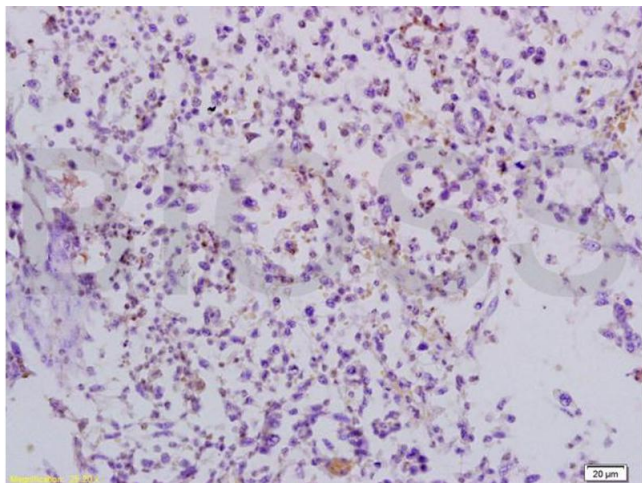
Immunohistochemistry (Paraffin-embedded Sections)

Image 1. Formalin-fixed and paraffin embedded mouse lymphoma tissue labeled with Anti-TRAF3/CD40bp Polyclonal Antibody, Unconjugated at 1:200 followed by conjugation to the secondary antibody and DAB staining



Immunohistochemistry

Image 2. Formalin-fixed and paraffin embedded human gastric carcinoma tissue labeled with Anti-TRAF3/CD40bp Polyclonal Antibody, Unconjugated (ABIN738921) at 1:200 followed by conjugation to the secondary antibody and DAB staining



Immunohistochemistry

Image 3. Formalin-fixed and paraffin embedded mouse lymphoma tissue labeled with Anti-TRAF3/CD40bp Polyclonal Antibody, Unconjugated (ABIN738921) at 1:200 followed by conjugation to the secondary antibody and DAB staining

Please check the [product details page](#) for more images. Overall 5 images are available for ABIN738921.