

Datasheet for ABIN738936  
**anti-SCARB1 antibody (AA 21-100)**[Go to Product page](#)

4 Images

2 Publications

## Overview

|                      |  |
|----------------------|--|
| Quantity:            | 100 µL   |
| Target:              | SCARB1   |
| Binding Specificity: | AA 21-100  |
| Reactivity:          | Human, Rat, Mouse, Chicken   |
| Host:                | Rabbit   |
| Clonality:           | Polyclonal   |
| Conjugate:           | This SCARB1 antibody is un-conjugated  |
| Application:         | Western Blotting (WB), ELISA, Flow Cytometry (FACS), Immunohistochemistry (Paraffin-embedded Sections) (IHC (p)) |

## Product Details

|                       |  |
|-----------------------|--|
| Immunogen:            | KLH conjugated synthetic peptide derived from human CD36L1 |
| Isotype:              | IgG  |
| Cross-Reactivity:     | Chicken, Human, Mouse, Rat                                 |
| Predicted Reactivity: | Cow,Pig,Horse,Rabbit                                       |
| Purification:         | Purified by Protein A.                                     |

## Target Details

|                   |   |
|-------------------|---|
| Target:           | SCARB1  |
| Alternative Name: | Scavenger receptor class B member 1 ( <a href="#">SCARB1 Products</a> ) |

## Target Details

|             |   |
|-------------|---|
| Background: | <p>Synonyms: CLA1, SRB1, CLA-1, SR-BI, CD36L1, HDLQTL6, Scavenger receptor class B member 1, CD36 and LIMPII analogous 1, CD36 antigen-like 1, Collagen type I receptor, thrombospondin receptor-like 1, CD36, SCARB1</p> <p>Background: Receptor for different ligands such as phospholipids, cholesterol ester, lipoproteins, phosphatidylserine and apoptotic cells. Probable receptor for HDL, located in particular region of the plasma membrane, called caveolae. Facilitates the flux of free and esterified cholesterol between the cell surface and extracellular donors and acceptors, such as HDL and to a lesser extent, apoB-containing lipoproteins and modified lipoproteins. Probably involved in the phagocytosis of apoptotic cells, via its phosphatidylserine binding activity.</p> <p>Receptor for hepatitis C virus glycoprotein E2. Binding between SCARB1 and E2 was found to be independent of the genotype of the viral isolate. Plays an important role in the uptake of HDL cholesteryl ester (By similarity).</p> |
| Gene ID:    | 949   |
| UniProt:    | <a href="#">Q8WTV0</a>  |
| Pathways:   | <a href="#">Cellular Response to Molecule of Bacterial Origin</a> , <a href="#">Hepatitis C</a> , <a href="#">Lipid Metabolism</a> , <a href="#">SARS-CoV-2 Protein Interactome</a>   |

## Application Details

|                    |  |
|--------------------|--|
| Application Notes: | WB 1:300-5000<br>ELISA 1:500-1000<br>FCM 1:20-100<br>IHC-P 1:200-400 |
| Restrictions:      | For Research Use only  |

## Handling

|                    |  |
|--------------------|--|
| Format:            | Liquid   |
| Concentration:     | 1 µg/µL  |
| Buffer:            | 0.01M TBS( pH 7.4) with 1 % BSA, 0.02 % Proclin300 and 50 % Glycerol.  |
| Preservative:      | ProClin  |
| Precaution of Use: | This product contains ProClin: a POISONOUS AND HAZARDOUS SUBSTANCE, which should be handled by trained staff only. |
| Storage:           | 4 °C,-20 °C  |

## Handling

Storage Comment: Shipped at 4°C. Store at -20°C for one year. Avoid repeated freeze/thaw cycles.

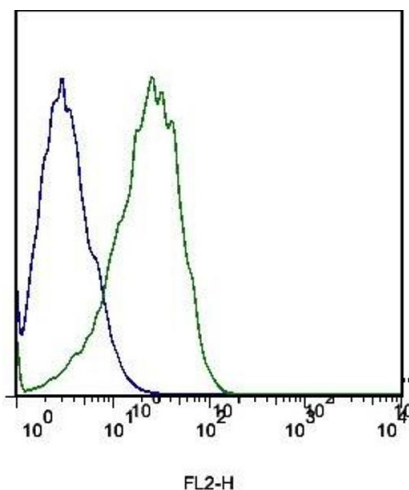
Expiry Date: 12 months

## Publications

Product cited in: Gabriel, Becher-Deichsel, Hlavaty, Mair, Walter: "The physiological expression of scavenger receptor SR-B1 in canine endometrial and placental epithelial cells and its potential involvement in pathogenesis of pyometra." in: **Theriogenology**, Vol. 85, Issue 9, pp. 1599-1609.e2, (2016) ([PubMed](#)).

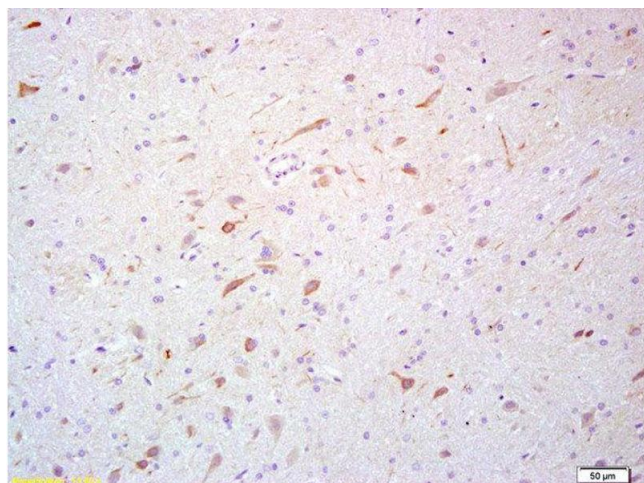
Pollard, Blesso, Zabalawi, Fulp, Gerelus, Zhu, Lyons, Nuradin, Francone, Li, Sahoo, Thomas, Sorci-Thomas et al.: "Procollagen C-endopeptidase Enhancer Protein 2 (PCPE2) Reduces Atherosclerosis in Mice by Enhancing Scavenger Receptor Class B1 (SR-B1)-mediated High-density Lipoprotein (HDL)-Cholesteryl Ester ..." in: **The Journal of biological chemistry**, Vol. 290, Issue 25, pp. 15496-511, (2015) ([PubMed](#)).

## Images



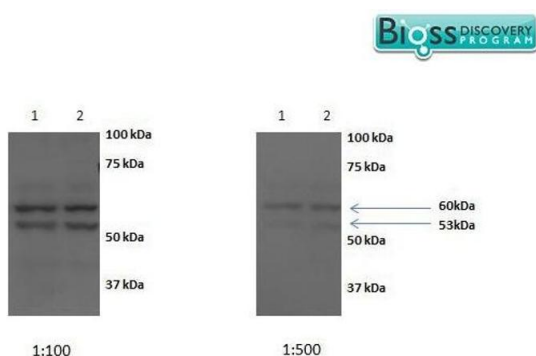
### Flow Cytometry

**Image 1.** Mouse liver cells probed with Rabbit Anti-Scavenger receptor class B member 1 Polyclonal Antibody (ABIN738936) at 1:100 for 60 minutes followed by incubation with Goat Anti-Rabbit IgG PE conjugated secondary at 1:100 (green) for 40 minutes compared to control cells (blue).



### Immunohistochemistry (Paraffin-embedded Sections)

**Image 2.** Formalin-fixed and paraffin embedded rat brain labeled with Rabbit Anti- Scavenger receptor class B member 1 Polyclonal Antibody, Unconjugated (ABIN738936) at 1:200 followed by conjugation to the secondary antibody and DAB staining



### Western Blotting

**Image 3.** Image kindly submitted by Brittany Baldwin-Murphy from Cornell University. Chick embryo liver hepatocytes probed with Rabbit Anti- Scavenger receptor class B member 1 Polyclonal Antibody at 1:100 or 1:500.

Submitted by Brittany Baldwin-Murphy of Cornell University

Please check the [product details page](#) for more images. Overall 4 images are available for ABIN738936.