

Datasheet for ABIN738951

**anti-PAX2A antibody****3** Images[Go to Product page](#)

## Overview

Quantity:	100 µL
Target:	PAX2A
Reactivity:	Human, Mouse, Rat, Cow, Dog, Pig, Chicken
Host:	Rabbit
Clonality:	Polyclonal
Conjugate:	This PAX2A antibody is un-conjugated
Application:	Western Blotting (WB), Flow Cytometry (FACS)

## Product Details

Immunogen:	KLH conjugated synthetic peptide derived from human PAX2
Isotype:	IgG
Cross-Reactivity:	Human, Mouse, Rat
Purification:	Purified by Protein A.

## Target Details

Target:	PAX2A
Alternative Name:	PAX2 ( <a href="#">PAX2A Products</a> )
Background:	<p>Synonyms: PAX2 Paired box gene 2, Paired box gene 2, paired box homeotic gene 2, paired box protein 2, Paired box protein Pax 2, Paired box protein Pax-2, Paired box protein Pax2, Pax 2.</p> <p>Background: PAX2 is a transcription factor critically required during the development of the nervous and excretory systems, including the midbrain, hindbrain, spinal cord, eye, ear and</p>

## Target Details

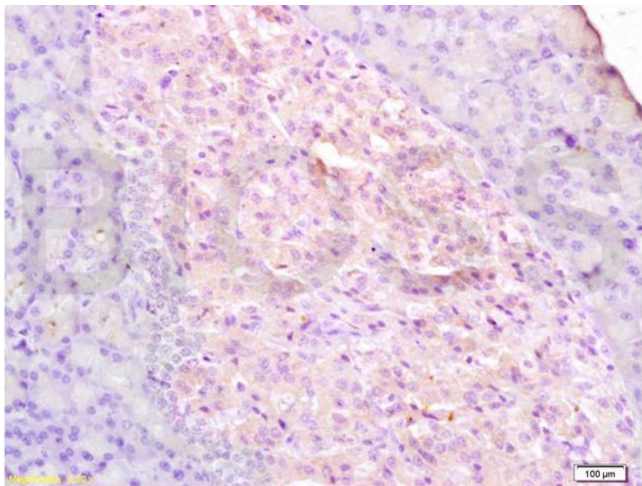
	urogenital tract. Like other products of the PAX gene family, PAX2 encodes a conserved 128 amino acid paired box DNA-binding domain in the N-terminal portion of the molecule.
Molecular Weight:	46kDa
Gene ID:	5076
Pathways:	<a href="#">Carbohydrate Homeostasis</a> , <a href="#">Stem Cell Maintenance</a> , <a href="#">Tube Formation</a>

## Application Details

Application Notes:	WB(1:100-500) Optimal working dilution should be determined by the investigator.
Restrictions:	For Research Use only

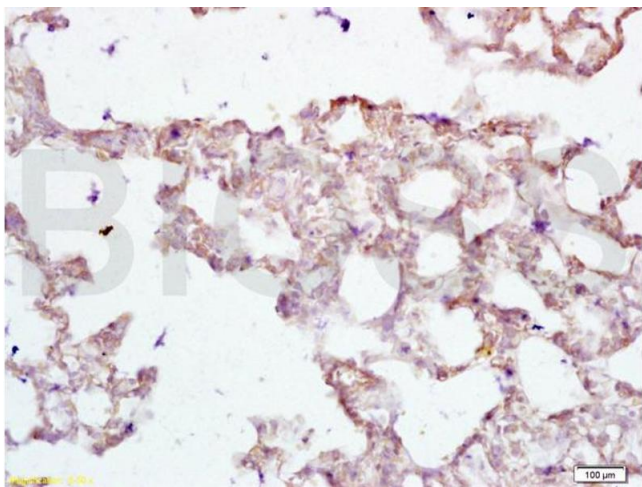
## Handling

Format:	Liquid
Concentration:	1 µg/µL
Buffer:	Aqueous buffered solution containing 1 % BSA, 50 % glycerol and 0.09 % sodium azide.
Preservative:	Sodium azide
Precaution of Use:	This product contains sodium azide: a POISONOUS AND HAZARDOUS SUBSTANCE which should be handled by trained staff only.
Storage:	-20 °C
Storage Comment:	Store at -20°C for 12 months.
Expiry Date:	12 months



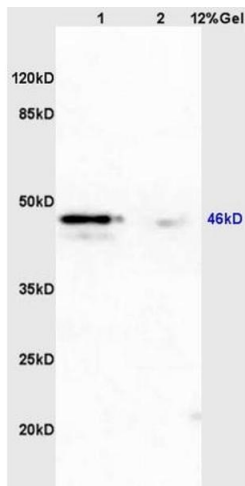
#### Immunohistochemistry

**Image 1.** Formalin-fixed and paraffin embedded mouse pancreas tissue labeled with Anti-PAX2 Polyclonal Antibody, Unconjugated (ABIN738951) at 1:200 followed by conjugation to the secondary antibody and DAB staining



#### Immunohistochemistry

**Image 2.** Formalin-fixed and paraffin embedded rat lung tissue labeled with Anti-PAX2 Polyclonal Antibody, Unconjugated (ABIN738951) at 1:200 followed by conjugation to the secondary antibody and DAB staining



#### SDS-PAGE

**Image 3.** Lane 1: mouse uterus lysates Lane 2: mouse brain lysates probed with Anti PAX2 Polyclonal Antibody, Unconjugated (ABIN738951) at 1:200 in 4 °C. Followed by conjugation to secondary antibody at 1:3000 90min in 37 °C. Predicted band 46kD. Observed band size: 46kD.