



[Go to Product page](#)

Datasheet for ABIN739261
anti-Protein A antibody

1 Image

Overview

Quantity:	100 µL
Target:	Protein A
Reactivity:	Staphylococcus aureus
Host:	Rabbit
Clonality:	Polyclonal
Conjugate:	This Protein A antibody is un-conjugated
Application:	ELISA, Western Blotting (WB), Immunofluorescence (Paraffin-embedded Sections) (IF (p)), Immunohistochemistry (Frozen Sections) (IHC (fro)), Immunohistochemistry (Paraffin-embedded Sections) (IHC (p)), Immunofluorescence (Cultured Cells) (IF (cc))

Product Details

Immunogen:	Recombinant protein A
Isotype:	IgG
Cross-Reactivity:	Bacteria
Cross-Reactivity (Details):	S. aureus
Purification:	Purified by Protein A.

Target Details

Target:	Protein A
Abstract:	Protein A Products

Target Details

Background:	<p>Synonyms: Immunoglobulin G binding protein A, Staphylococcal protein A, SPA, gG-binding protein A, Staphylococcus aureus.</p> <p>Background: Protein A is a 40-60 kDa surface protein originally found in the cell wall of the bacteria Staphylococcus aureus (SPA). SPA binds proteins from many of mammalian species, most notably IgGs, and helps inhibit phagocytic engulfment and acts as an immunological disguise via this type of interaction, thus the bacteria will disrupts opsonization and phagocytosis. SPA is known to bind with Fc region of immunoglobulins preferentially through interaction with the VH3 variable region of the heavy chain. SPA has been shown to bind with high affinity to human IgG1 and IgG2 as well as mouse IgG2a and IgG2b, whereas bind with moderate affinity to human IgM, IgA and IgE as well as mouse IgG3 and IgG1. SPA is often produced in E. coli and is practically coupled to other molecules such as enzymes, biotin, radioactive iodine for use in immunology and other biological research. SPA is also immobilized onto solid supports such as agarose beads for total IgG purifying or interest protein or protein complex identifying in immunoprecipitation studies.</p>
-------------	---

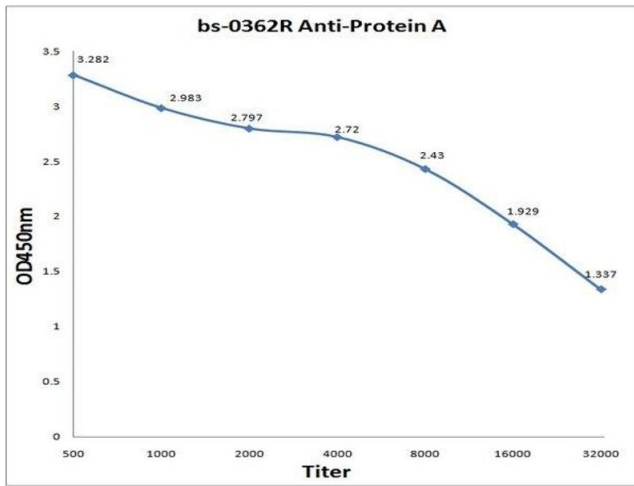
Application Details

Application Notes:	WB 1:100-1000 IHC-P 1:100-500 IF(IHC-P) 1:50-200
--------------------	--

Restrictions:	For Research Use only
---------------	-----------------------

Handling

Format:	Liquid
Concentration:	1 µg/µL
Buffer:	0.01M TBS(pH 7.4) with 1 % BSA, 0.02 % Proclin300 and 50 % Glycerol.
Preservative:	Sodium azide
Precaution of Use:	This product contains Sodium azide: a POISONOUS AND HAZARDOUS SUBSTANCE, which should be handled by trained staff only.
Storage:	4 °C,-20 °C
Storage Comment:	Shipped at 4°C. Store at -20°C for one year. Avoid repeated freeze/thaw cycles.
Expiry Date:	12 months



ELISA

Image 1. Antigen: 0.2ug/100ul Primary: Antiserum, 1:500, 1:1000, 1:2000, 1:4000, 1:8000, 1:16000, 1:32000, Secondary: HRP conjugated Goat Anti-Rabbit IgG -HRP) at 1:5000, TMB staining, Read the data in MicroplateReader by 450nm.