



[Go to Product page](#)

Datasheet for ABIN739353

anti-NT5C2 antibody (AA 1-100)

1 Image

1 Publication

Overview

Quantity:	100 µL
Target:	NT5C2
Binding Specificity:	AA 1-100
Reactivity:	Rat
Host:	Rabbit
Clonality:	Polyclonal
Conjugate:	This NT5C2 antibody is un-conjugated
Application:	Western Blotting (WB), ELISA, Immunofluorescence (Cultured Cells) (IF (cc)), Immunofluorescence (Paraffin-embedded Sections) (IF (p)), Immunohistochemistry (Paraffin-embedded Sections) (IHC (p)), Immunohistochemistry (Frozen Sections) (IHC (fro))

Product Details

Immunogen:	KLH conjugated synthetic peptide derived from human NT5C2
Isotype:	IgG
Cross-Reactivity:	Rat
Predicted Reactivity:	Human,Mouse,Dog,Cow
Purification:	Purified by Protein A.

Target Details

Target:	NT5C2
---------	-------

Target Details

Alternative Name:	NT5C2 (NT5C2 Products)
Background:	Synonyms: GMP, NT5B, PNT5, SPG45, SPG65, cN-II, Cytosolic purine 5'-nucleotidase, Cytosolic 5'-nucleotidase II, NT5C2, NT5CP Background: May have a critical role in the maintenance of a constant composition of intracellular purine/pyrimidine nucleotides in cooperation with other nucleotidases. Preferentially hydrolyzes inosine 5'-monophosphate (IMP) and other purine nucleotides.
Gene ID:	22978
UniProt:	P49902

Application Details

Application Notes:	WB 1:300-5000 ELISA 1:500-1000 IHC-P 1:200-400 IHC-F 1:100-500 IF(IHC-P) 1:50-200 IF(IHC-F) 1:50-200 IF(ICC) 1:50-200
Restrictions:	For Research Use only

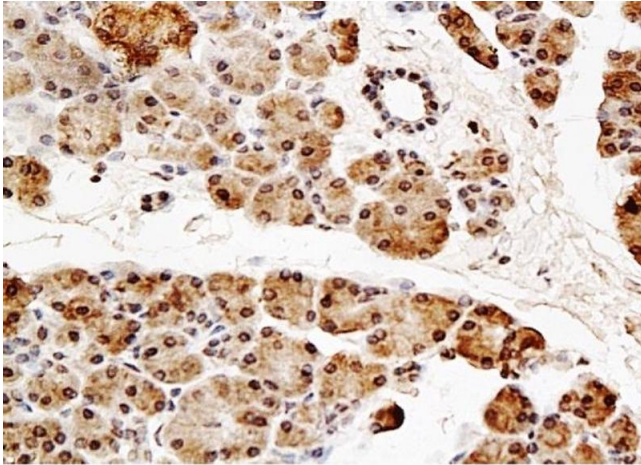
Handling

Format:	Liquid
Concentration:	1 µg/µL
Buffer:	0.01M TBS(pH 7.4) with 1 % BSA, 0.02 % Proclin300 and 50 % Glycerol.
Preservative:	ProClin
Precaution of Use:	This product contains ProClin: a POISONOUS AND HAZARDOUS SUBSTANCE, which should be handled by trained staff only.
Storage:	4 °C,-20 °C
Storage Comment:	Shipped at 4°C. Store at -20°C for one year. Avoid repeated freeze/thaw cycles.
Expiry Date:	12 months

Publications

Product cited in: Long, Qiu, Liu, Fei, Feng, Wang, Zhong, Yi, Liu, Zhang, Han: "Functional recovery and neuronal regeneration of a rat model of epilepsy by transplantation of Hes1-down regulated bone marrow stromal cells." in: **Neuroscience**, Vol. 212, pp. 214-24, (2012) ([PubMed](#)).

Images



Immunohistochemistry

Image 1. Formalin-fixed and paraffin embedded rat pancreas tissue labeled with Anti-NT5C2 Polyclonal Antibody, Unconjugated (ABIN739353) onjugated