



[Go to Product page](#)

Datasheet for ABIN739430
anti-CRH antibody (AA 145-185)

4 Images

Overview

Quantity:	100 µL
Target:	CRH
Binding Specificity:	AA 145-185
Reactivity:	Rat, Mouse
Host:	Rabbit
Clonality:	Polyclonal
Conjugate:	This CRH antibody is un-conjugated
Application:	Western Blotting (WB), ELISA, Immunofluorescence (Cultured Cells) (IF (cc)), Immunofluorescence (Paraffin-embedded Sections) (IF (p)), Immunohistochemistry (Paraffin-embedded Sections) (IHC (p)), Immunohistochemistry (Frozen Sections) (IHC (fro))

Product Details

Immunogen:	KLH conjugated synthetic peptide derived from human CRF
Isotype:	IgG
Cross-Reactivity:	Mouse, Rat
Predicted Reactivity:	Human,Dog,Pig,Rabbit,Guinea Pig
Purification:	Purified by Protein A.

Target Details

Target:	CRH
---------	-----

Target Details

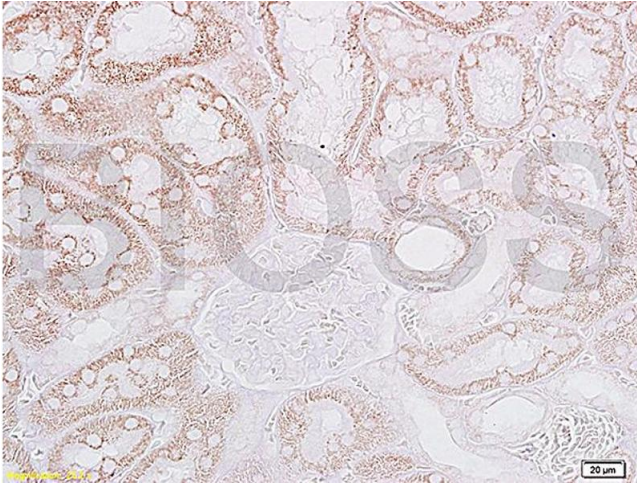
Alternative Name:	CRF (CRH Products)
Background:	Synonyms: CRF, Corticoliberin, Corticotropin-releasing factor, Corticotropin-releasing hormone, CRH Background: This hormone from hypothalamus regulates the release of corticotropin from pituitary gland.
Gene ID:	1392
UniProt:	P06850
Pathways:	Positive Regulation of Peptide Hormone Secretion , Hormone Activity , Negative Regulation of Hormone Secretion , cAMP Metabolic Process , Myometrial Relaxation and Contraction , Feeding Behaviour

Application Details

Application Notes:	WB 1:300-5000 ELISA 1:500-1000 IHC-P 1:200-400 IHC-F 1:100-500 IF(IHC-P) 1:50-200 IF(IHC-F) 1:50-200 IF(ICC) 1:50-200
Restrictions:	For Research Use only

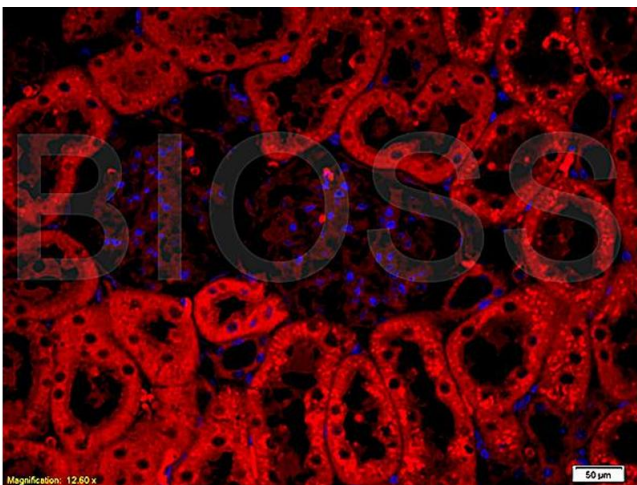
Handling

Format:	Liquid
Concentration:	1 µg/µL
Buffer:	0.01M TBS(pH 7.4) with 1 % BSA, 0.02 % Proclin300 and 50 % Glycerol.
Preservative:	ProClin
Precaution of Use:	This product contains ProClin: a POISONOUS AND HAZARDOUS SUBSTANCE, which should be handled by trained staff only.
Storage:	4 °C,-20 °C
Storage Comment:	Shipped at 4°C. Store at -20°C for one year. Avoid repeated freeze/thaw cycles.
Expiry Date:	12 months



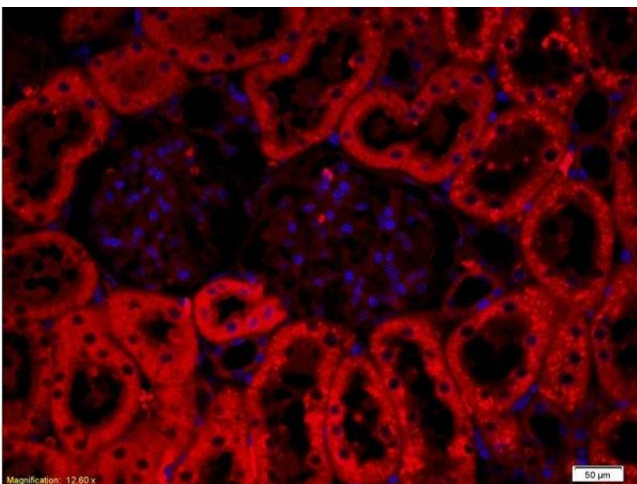
Immunohistochemistry

Image 1. Formalin-fixed and paraffin embedded: rat kidney tissue labeled with Anti-CRF/CRH Polyclonal Antibody, Unconjugated (ABIN739430) at 1:200, followed by conjugation to the secondary antibody and DAB staining



Immunofluorescence

Image 2. Formalin-fixed and paraffin embedded: rat kidney tissue labeled with Anti-CRF/CRH Polyclonal Antibody (ABIN739430), Unconjugated at 1:200, followed by conjugation to the secondary antibody was Goat Anti-Rabbit IgG, PE conjugated at 1:200 for 40 minutes at 37°C DAPI(5 µg/ml, blue) was used to stain the cell nuclei



Immunofluorescence (Paraffin-embedded Sections)

Image 3. Formalin-fixed and paraffin embedded: rat kidney tissue labeled with Anti-CRF/CRH Polyclonal Antibody , Unconjugated at 1:200, followed by conjugation to the secondary antibody was Goat Anti-Rabbit IgG, PE conjugated (-PE) at 1:200 for 40 minutes at 37°C DAPI(5µg/ml, blue) was used to stain the cell nuclei

Please check the [product details page](#) for more images. Overall 4 images are available for ABIN739430.